

Our ref no : 0104/09

Date 01 Apr 2009

To Whom It May Concern:

Re: LOCTITE Authorized Reseller in Singapore

Dear Sir/Madam,

This is to certify Sealand Continental Pte, Ltd. located at 13 Kaki Bukit Road 1 #02-03 Eunos Technologic Singapore 415928. has been appointed as an Authorized Reseller for the sole purpose of marketing and sales of the Loctite Maintenance, Repair and Overhaul (MRO) range of products in Singapore.

The appointment takes effect from Apr 1, 2009 onwards and is subject to periodic reviews and agreed conditions.

Henkel is the brand owner and manufacturer of Loctite and by buying from our Authorized Reseller, you can be rest assured on the authenticity of these products.

Kindly contact the undersigned should you need further clarification on the matter.

Sincerely,

Shawn Siau
Sales & Marketing Manager
Sea Contractor (S) Pte Ltd
DID : 65 63050432
Mobile : 91077665
Email : shawn@seacontractor.com

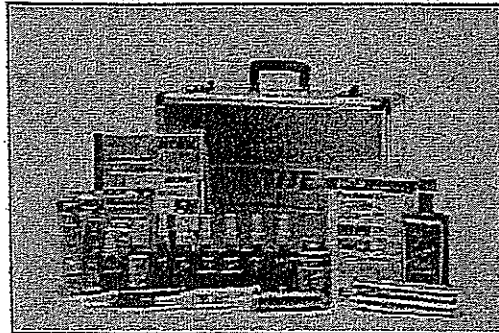
SEA CONTRACTOR (S) PTE LTD

40 Gul Crescent
Singapore 629540
T (65) 6283 6363
F (65) 6281 6623
E admin@seacontractor.com
W www.seacontractor.com
ROC 198903007R



LOCTITE®

Marine Emergency Repair & Maintenance Kit Product Check List



| Item Number | Description | Quantity |
|-------------|--|----------|
| 32657 | Loctite 222 | 1 |
| 23962 | Loctite 243 | 1 |
| 30933 | Loctite 277 | 1 |
| 23496 | Loctite 290 | 1 |
| 98853 | Loctite metal matic | 4 |
| 82093 | Loctite Underwater repair | 1 |
| 96322 | Loctite Pipe repair kit | 2 |
| 28654 | Loctite Form A thread | 1 |
| 22645 | Loctite 515 | 1 |
| 57435 | Loctite 574 | 1 |
| 18718 | Loctite 5699 | 1 |
| 30980 | Loctite 542 | 1 |
| 23411 | Loctite 577 | 1 |
| 34395 | Loctite marine anti seize | 1 |
| 30994 | Loctite 603 | 1 |
| 32717 | Loctite 648 | 1 |
| 31908 | Loctite Yuk Off Cleaner | 1 |
| 22647 | Loctite 660 | 1 |
| | Metal Tool Box | 1 |
| | MSDS TDS Book let | 1 |
| | Marine User Guide | 1 |
| | Survey Feedback Form | 1 |
| | Testimony Form | 1 |
| | Product Check List | 1 |
| | Solution for Marine Maintenance Brochure | 1 |

Henkel
Technologies

Henkel Singapore Pte. Ltd
401, Commonwealth Drive
#03-01/02 Haw Par Technocentre
Singapore 149598

Tel +65 6266 0100
Fax +65 6472 6738

www.henkel.com

LOCTITE®

Maintenance Solutions



Henkel



Table of Contents

- | | | | | | |
|----|---|---|----|---|---|
| 4 |  | Threadlocking Prevent fastener loosening | 22 |  | Anti-Seize Lubricants Prevent rust, corrosion, galling, or seizing on metal parts in extreme environments |
| 6 |  | Thread Sealing Prevent leaks – air, hydraulic | 24 |  | Rust Treatment and Cleaning Stabilize existing rust, guard against corrosion. Clean and degrease parts and work surfaces. |
| 8 |  | Gasketing Prevent leaks – gasket, oil, transmission, coolant | 26 |  | Bonding Fastening and joining |
| 10 |  | Retaining Prevent backlash – key wallow, spun bearings, shaft alignment, wear | 28 |  | Kits, Specialty, and Emergency Repair Products |
| 12 |  | Metal Repair System Repair worn surfaces and damaged parts | 29 |  | Accessories |
| 14 |  | Wear Prevention – Reclaim and Repair Rebuild worn or corroded surfaces – material handling equipment | 30 |  | Loctite® Marine Specialty Products |
| 16 |  | Grouting, Floor and Concrete Repair Mount heavy equipment or set anchor bolts Restore old concrete or cracked floors | 32 |  | Agency Approvals |
| 18 |  | Anti-Slip Traction System Guard against slippery pedestrian or vehicular areas | 33 |  | Need It Now! Form Reliability Improvement Suggestion Form |
| 20 |  | Rubber and Belt Repair Repair damaged conveyor belts | 36 |  | Fluid Capability Chart |
| | | | 38 |  | Product Ordering Information |

Henkel Adhesive Technologies



Henkel is the world market leader in adhesives, sealants and surface treatments for consumers, craftsmen and industrial applications.

From our long tradition we have a well-balanced portfolio of International, regional and local brands. Henkel offers a multitude of applications to satisfy the needs of different target groups – consumers as well as craftsmen and industrial businesses.

It all began on June 22, 1923, when the very first delivery of adhesives left the Henkel facility in Düsseldorf, Germany. This historical milestone marked the birth of a business segment in which Henkel is now global market leader.

Adhesives, Sealants & Surface Treatments

Adhesives, Sealants and Surface Treatments from Henkel serve the transportation, electronics, aerospace, metal, durable goods, consumer goods, maintenance and repair and packaging industries, and offer a broad range of products for the craftsman and consumer.



Beverage Industry



Cement Plants



Chemical Plants



Facilities Maintenance



Food Processing



Marine Industry



Mines & Quarries



Municipality



Power Generation



Printing



Pulp & Paper



Railways



Steel Industry



Waste Water Treatment Plant

Loctite® Industrial Maintenance Solutions

Proven with over 50 years industrial experience, typical product applications include:

- Threadlocking - Securely lock any threaded fastener or fitting against vibration and shock load
- Thread Sealing - Seal and protect threaded joints and components
- Retaining - Retain bearings, bushes and cylindrical parts into housings or onto shafts – even if worn
- Gasketing - Instantly replace gaskets of any size or shape
- Anti-Seize Lubricants - Protect metal parts from corrosion, galling and seizing
- Instant & Structural Bonding - Permanently and quickly bond a wide variety of materials
- And much more...

Loctite® Maintenance Reliability Workshop

Hands-On Product and Reliability Training

In the world of industry, maintenance typically contributes to over a quarter of the total cost of finished goods. Henkel has identified the taproot causes of failures on most mechanical equipment, and teaches proactive approaches to combat downtime and optimize productivity and reliability.

After Loctite® Maintenance Reliability Workshop, your work force will have the knowledge and the tools to do the following:

The majority of unplanned downtime is caused by mechanical subcomponent failure. Some taproots reasons are: fastener loosening, key wallow, PTFE tape fouling control valves, fitting leakage and spun bearings. This workshop teaches how to prevent these from happening proactively.



Threadlocking

- How a threaded fastener works
- Advantages and disadvantages of mechanical locking devices
- Loctite® Threadlockers
 - How they work
 - Benefits
 - Application cases and applications techniques
 - Product selection
- Hands-on demonstrations & practice



Gasketing

- Why gaskets leak
 - Design and service factors
 - Gasket materials and dressings
 - Assembly problems
- Form-in-place gasketing basics
- Loctite® Anaerobic and Silicone (RTV) Gasketing
 - How they work & benefits
 - Application cases and application techniques
 - Product selection
- Hands-on demonstrations & practice



Thread Sealing

- Types of threads and fittings
- Causes of leaks
- Loctite® Thread Sealants
 - How they work
 - Benefits
 - Application cases and application techniques
 - Product selection
- Hands-on demonstrations & practice



Retaining

- Types, classes, and typical uses of cylindrical fitting
- Potential fit problems and possible solutions
- Loctite® Retaining Compounds
 - How they work
 - Benefits
 - Application cases and application techniques
 - Product selection
- Hands-on demonstrations & practice

Workshop Features

Pre-plant survey

- Workshop can be tailored to meet your needs through a plant tour and pre-survey

Hands-on training

- Job related and product specific
- Review of common failure causes and prevention
- Various applications cover all trades
- Products and hands-on practice components issued
- Training materials supplied
- Conducted on-site

In-plant follow up

- Ensure continuous product application updates

Loctite® Product Toolbox

- Issued at the workshop for participants to do hands-on practice
- The Toolbox contains essential tools for industrial maintenance and repair
- Products in the Toolbox are customized according to different needs in the plants

Loctite® Surface Engineering and Maintenance Solutions Workshops teach the know-how to REBUILD, REPAIR and PROTECT industrial equipment and surfaces, extend equipment life, improve efficiency, and minimize down time.

Surface Engineering Workshop

Much of the destruction of plant and equipment is a direct result of the continual and incremental degradation of a surface that eventually result in structural failure. Surface preparation is critical to enable the composite to stay fixed in place onto the substrate in order to perform at its designed specifications.



Mechanical Wear / Abrasion

- Mechanical wear / abrasion
- Traditional methods to prevent and repair wear / abrasion
- Wear resistant polymer composites - dissected
- How wear and abrasion affect metal surfaces and surface dynamics
- Advantages of wear resistant polymer composites versus traditional



Corrosion / Erosion

- Corrosion / erosion fundamentals
- Coating delamination types
- Underfilm corrosion
- Traditional methods to prevent and repair corrosion
- How corrosion and chemical resistant polymer composites work and the advantages

Quality System, Global Network and Local Service

Loctite® advanced Polymer Composite products are manufactured under a quality system complying with the requirements of ISO 9001:2000, ISO/TS 16949:2002 and EN ISO 14001:2004. Loctite® is recognized widely by independent classification societies, industrial, commercial and government users.

Loctite®'s global sales & distribution network and engineering centers guarantee consistent service to global accounts and continuous innovations. Local technical engineers, applicators, application specialists in your countries provide timely service to ensure the right Loctite® system is specified and applied correctly on your equipment.

THE SOLUTION TO YOUR INDUSTRIAL REPAIR AND PROACTIVE MAINTENANCE

Loctite® Nordbak® and Fixmaster® Polymer Composite products bring various industries with:

- Reduced Downtime and Spare Parts Inventory
- Reduced Energy Costs
- Improved Efficiency, Reliability and Safety
- Extended Equipment Life
- Minimized Maintenance Costs
- Global Network and Local Service



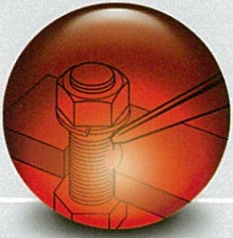
ISO 9001:2000
291669 QM



ISO/TS 16949:2002
291669 TS2/42651



EN ISO 14001:2004
327217 UM



Threadlocking

Locking of Threaded Fasteners

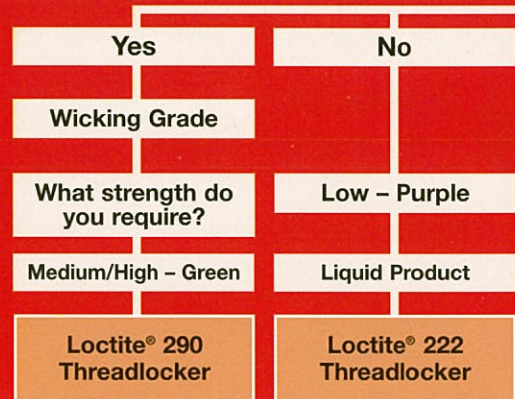
- Prevents loosening from shock and vibration
- Single component – clean and easy to apply
- Can be used on various sizes of fasteners – reduces inventory costs
- Seals threads
- Stops rust and corrosion

Are the parts already assembled?

Helpful Hints:

- Clean parts with Loctite® ODC-Free Cleaner & Degreaser before applying the adhesive
- If the threadlocker will be applied below 40°F (5°C), pre-treat with Loctite® 7649 Primer N
- If the parts were in contact with aqueous washing solutions or cutting fluids which leave a protective layer on the surface, wash with hot water before use

Solution



| | | |
|---|-------------------------------|-------------------------------|
| Fastener Size | #2 to 1/2" (M2 to M12) | Up to 1/4" (Up to M6) |
| Strength | High | Low |
| Cure Time (Fixture / Full Strength)* | 20 min./24 hr. | 10 min./24 hr. |
| Breakaway / Prevail Torque lb.in. (N.m) | 90/260 (10/29) | 53/30 (6/3) |
| Temperature Resistance for Continuous Service | 300°F (150°C) | 300°F (150°C) |
| Package Sizes – Part Number | 50 ml bottle 250 ml bottle | 50 ml bottle 250 ml bottle |

* Typical value @ 70°F (22°C)

Additional Loctite® brand Threadlockers

| Name | Strength | Breakaway/Prevail Torque lb.in. (N.m) | Features |
|------|----------|---------------------------------------|------------------------------------|
| 220 | Low | 85/170 (9/19) | Wicking |
| 242 | Medium | 110/43 (12/4) | Fasteners 1/4" to 3/4" (M6 to M20) |
| 262 | High | 189/275 (21/31) | Fasteners up to 3/4" (M20) |
| 272 | High | 200/220 (22/24) | High Temp up to 232 °C |
| 2760 | High | 325/320* (36/36) | Primerless |

* Breakloose value

Use Loctite® 7649 Primer N to:

1. Activate inactive surfaces.
2. Speed cure times for faster return to service.
3. Speed curing through larger gaps and deep threads.
4. Substantially speed cure times on cold parts.

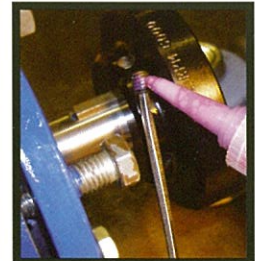
Primer is optional with:

Active surfaces: Brass, copper, bronze, iron, soft steel, nickel.

Primer is required with:

Inactive surfaces: Aluminum, stainless steel, magnesium, zinc, black oxide, cadmium, titanium, others.

Package Sizes: 1.75 oz., 4.5 oz.

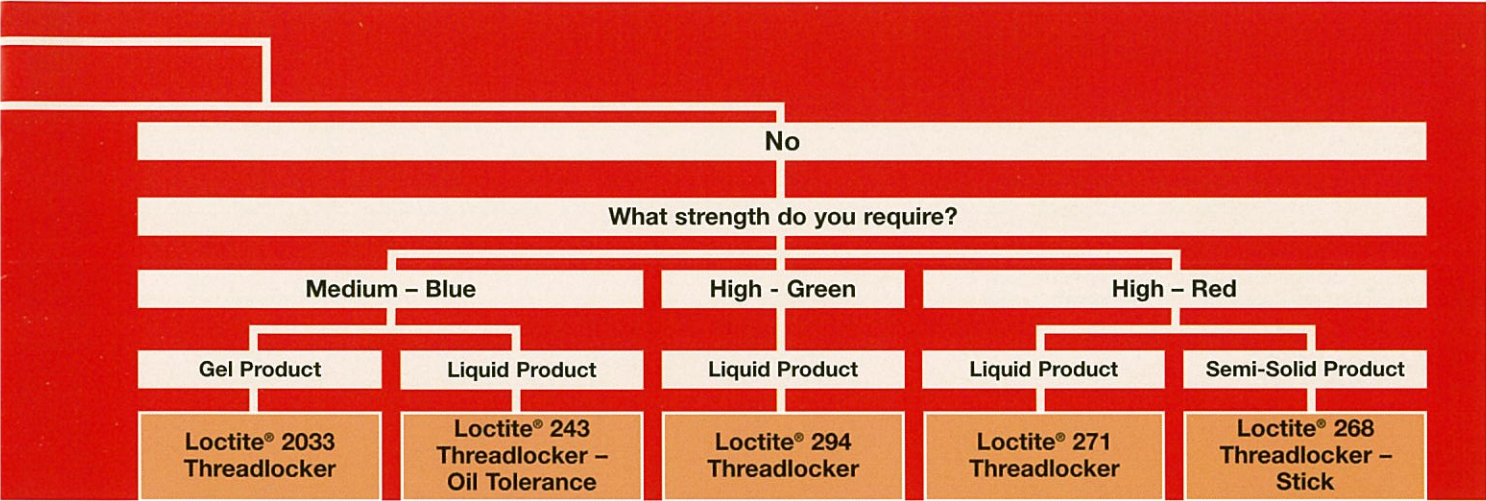


Loctite® 290 Threadlocker

Recommended for locking pre-assembled fasteners, i.e. instrumentation screws, electrical connectors, and set screws. Also seals porosities in welds and metal parts. Mil Spec (S-46163A) Type III, Grade R. NSF/ANSI 61.

Loctite® 222 Threadlocker

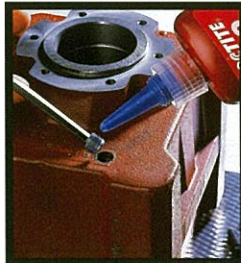
Recommended for low-strength threadlocking of adjustment screws, countersunk head screws, and set screws; on collars, pulleys, tool holders, and controllers. Also for low strength metals such as aluminum or brass. Mil-Spec (S-46163A) Type II, Grade M.



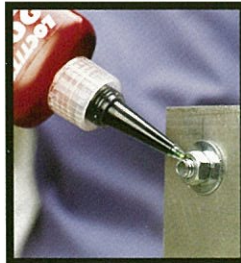
| | | | | |
|------------------------|-------------------------------|-----------------------------|-------------------------------|---|
| 1/4" to 1" (M6 to M25) | 1/4" to 3/4" (M6 to M20) | Under 1/4" (Below M6) | Up to 1" (Up to M25) | Up to 3/4" (Up to M20) |
| Medium | Medium | High | High | High |
| 20 min./24 hr. | 10 min./24 hr. | 6 min./24 hr. | 20 min./24 hr. | 20 min./24 hr. |
| 142/62 (16/7) | 180/62 (20/7) | 289/237 (32/26) | 250/275 (28/31) | 202/4 (22/0.5) |
| 300°F (150°C) | 300°F (150°C) | 450°F (232°C) | 300°F (150°C) | 300°F (150°C) |
| 39 ml bottle | 50 ml bottle 250 ml bottle | 50ml bottle 250ml bottle | 50 ml bottle 250 ml bottle | 9 g stick – 37774 19 g stick – 37775 |



Loctite® 2033 Threadlocker
A medium strength gel threadlocker for use on standard or large thread applications. It is easy to use and economic, with multi-dispense options. The gel consistency is ideal for overhead or pre-applied applications where product drip is a concern.

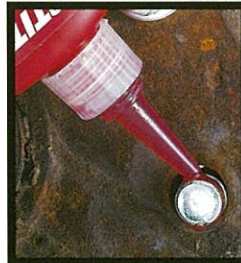


Loctite® 243 Threadlocker – Oil Tolerance
With improved oil tolerance, Loctite® 243 Threadlocker is effective on all types of metal threaded fasteners. Prevents loosening on vibrating parts such as pump, motor mounting bolts, gear boxes, or presses. Removable with hand tools. NSF/ANSI 61. CFIA Approved.

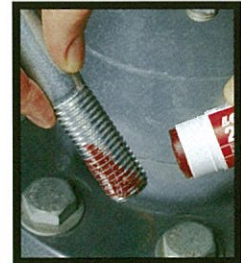


Loctite® 294 Threadlocker
A low viscosity, high strength threadlocker for pre-assembled bolts to secure them in place. Penetrates threads by capillary action. Seals porosities in welds and metal parts.

Secures set screws and other assemblies after settings are completed. Performs well on oily fasteners.



Loctite® 271 Threadlocker
A high strength, low viscosity threadlocker for fasteners up to 1" (25 mm) in diameter. UL Classified for U.S. CFIA Approved.



Loctite® 268 Threadlocker – Stick
This convenient semi-solid stick form is portable and less messy. Its high strength prevents loosening of threaded fasteners. Well suited for heavy-duty applications.



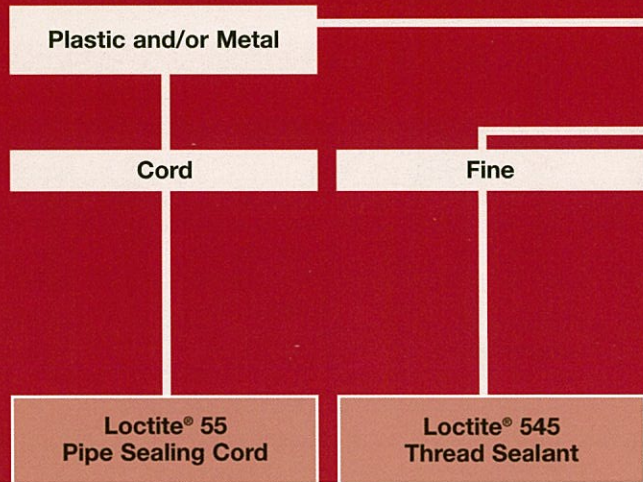
Thread Sealing

- Replaces tapes and pastes
- Liquids ensure complete contact between threads for a 100% seal
- Liquids will not creep, shrink, shred, or block systems (including filters)
- Disassembly can be achieved easily with basic hand tools

Are the parts metal or plastic?

Helpful Hints:

- If the sealant (Loctite® 545 Thread Sealant, Loctite® 565 PST Thread Sealant, Loctite® 567 PST Thread Sealant, or Loctite® PST 561 Pipe Sealant) will be applied below 40°F (5°C), pre-treat with Loctite® 7649 Primer N
- All parts must be clean and dry before sealing – use Loctite® ODC-Free Cleaner & Degreaser



Solution

| | Loctite® 55 Pipe Sealing Cord | Loctite® 545 Thread Sealant |
|---|---|-------------------------------|
| Description | Cord | Purple Liquid |
| Maximum Thread Size | 4" (100 mm) | Up to 2" (50 mm) |
| Temperature Resistance | 300°F (150°C) | 300°F (150°C) |
| Maximum Pressure Resistance (psi) / Cure Time (N/mm²) | 10,000 psi / instant (68.9) | 10,000 psi / 24 hrs. (68.9) |
| Substrate to be Sealed | Metal, Plastic or Both | Metal |
| Instant Low Pressure Seal | Yes | No |
| Package Sizes – Part Number | 5,700 inches (150M) 1,968 inches (50M) | 50 ml bottle 250 ml bottle |

Additional Loctite® brand Thread Sealants

| Name | Features |
|------------------------------|---|
| Loctite® 565 Thread Sealant | Controlled strength for ease of disassembly |
| Loctite® 5651 Thread Sealant | Easy application by hand. For use on construction pipe sealing. |

Use Loctite® 7649 Primer N to:

1. Activate inactive surfaces.
2. Speed cure times for faster return to service.
3. Speed curing through larger gaps and deep threads.
4. Substantially speed cure times on cold parts.

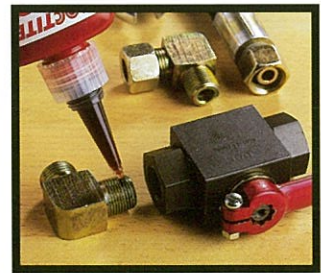
Primer is optional with:

Active surfaces: Brass, copper, bronze, iron, soft steel, nickel.

Primer is required with:

Inactive surfaces: Aluminum, stainless steel, magnesium, zinc, black oxide, cadmium, titanium, others.

Package Sizes: 1.75 oz., 4.5 oz.



Loctite® 55 Pipe Sealing Cord

Can be safely applied on metal and plastic threaded fittings. Potable water: NSF/ANSI Standard 61. UL Listed and Certified to CSA® International.

Loctite® 545 Thread Sealant

Recommended for fine threaded fittings as used in hydraulic and pneumatic installations and small fittings in general. ABS Approved. CFIA Approved.



Metal parts

Are the threads fine or coarse?

Coarse

Do you prefer a solid or a liquid?
(Solid is ideal for overhead or hard to reach applications)

Liquid

Semi-Solid

**Loctite® 5770
Thread Sealant**

**Loctite® 577
Thread Sealant**

**Loctite® 567 PST Thread
Sealant with PTFE**

**Loctite® 561 PST Pipe
Sealant with PTFE - Stick**

Off-White Paste

Yellow Paste

White Paste

White Stick

Up to 2" (50 mm)

Up to 2" (50 mm)

3" (75 mm)

3" (75 mm)

530°F (277°C)

265°F (130°C)

400°F (204°C)

300°F (150°C)

10,000 psi/72 hrs. (68.9)

10,000 psi / 72 hrs. (68.9)

10,000 psi / 72 hrs. (68.9)

10,000 psi / 72 hrs. (68.9)

Metal

Metal

Stainless Steel, Aluminum

Metal

Yes

No

Yes

Yes

50 ml bottle
250 ml bottle

50 ml bottle
250 ml bottle

50 ml tube
250 ml tube

19 g stick - 37776



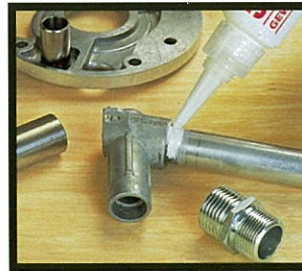
**Loctite® 5770
Thread Sealant**

Designed to seal threaded pipe fittings in applications requiring continuous heat resistance up to 530°F. Ideal for applications in pressurized steam lines and boiler rooms.



**Loctite® 577
Thread Sealant,
Coarse Threads**

Medium strength, general purpose sealant for use on coarse, threaded components.



**Loctite® 567 PST
Thread Sealant
with PTFE**

Withstands temperatures to 400°F with excellent solvent resistance. Locks and seals tapered pipe threads and fittings, including high pressure applications. Disassembles with hand tools. **ABS Approved.**



**Loctite® 561 PST Pipe
Sealant with PTFE - Stick**

Semi-solid stick form is convenient, portable, and less messy. Formulated for fast, reliable curing on metal, tapered pipe threads and fittings. Loctite® 561 PST Pipe Sealant provides high pressure sealing and withstands continuous operating temperatures of -65°F to 300°F (-54°C to 150°C).



Gasketing

Sealing of Flanges

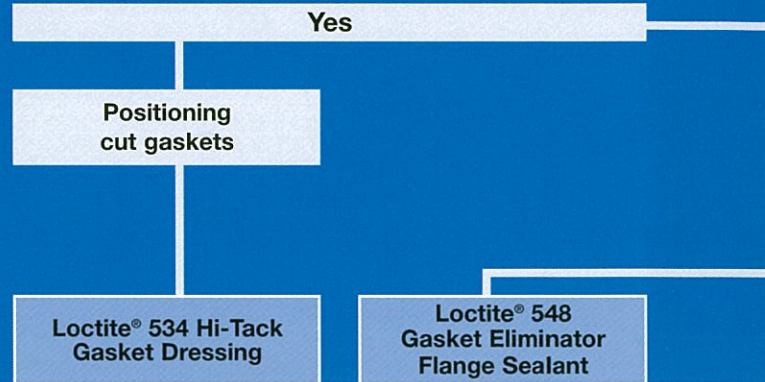
- No shimming effect – controlled tolerances, no need for re-torquing
- Fill all voids – reduce the need for a fine surface finish of flanges
- Parts can be disassembled easily even after extended service
- Resists high pressure when fully cured

Does the existing gasket need to be used as a shim?

Helpful Hints:

- If there are traces of old gasket left on the parts to be sealed, clean with Loctite® 790 Chisel Paint Remover
- All parts must be clean and dry before sealing – use Loctite® ODC-Free Cleaner & Degreaser
- Anaerobic products cure between metal surfaces with the absence of air

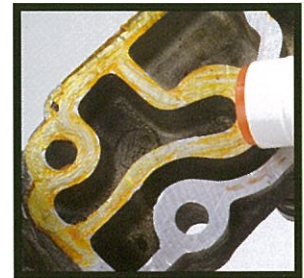
Solution



| | Loctite® 534 Hi-Tack Gasket Dressing | Loctite® 548 Gasket Eliminator Flange Sealant |
|--|--------------------------------------|---|
| Gasket Type | Use with cut gasket | Formed-in-place |
| Gap Fill | N.A. | 0.010" (0.25 mm) |
| Cure Method | Anaerobic | Anaerobic |
| Fixture / Cure Time | N.A. | N.A. / 24 hrs. |
| Temperature Resistance (Continuous / Intermittent) | 300°F (150°C) / N.A. | 300°F (150°C) / N.A. |
| Instant Seal | Excellent | Excellent |
| Oil Resistance | Excellent | Excellent |
| Water / Glycol Resistance | N.A. | Good |
| Package Sizes – Part Number | 19 g stick – 40392 | 19 g stick – 40393 |

Additional Loctite® Brand Gasketing Products

| Name |
|--|
| Loctite® 515 Gasket Eliminator Flange Sealant |
| Loctite® 518 Gasket Eliminator Flange Sealant |
| Loctite® 598 Black |
| Loctite® RTV, Silicone Adhesive Sealants (Black, Clear, White, Blue, Red Hi-Temp.) |
| Loctite® 5699 Grey |
| Loctite® 5920 Copper |
| Loctite® 790 Chisel Paint Remover |



Use Loctite® 790 Chisel Paint Remover to:

1. Lift off baked-on gaskets, gasket cements, formed-in-place gaskets, carbon deposits, dried oil, grease and paint on any type of metal and wood in minutes.
2. Penetrates and cleans intricate shapes and will not run off, even on vertical surfaces.

Package Sizes: 18 oz. aerosol.



Loctite® 534 Hi-Tack Gasket Dressing

No mess semi-solid formula offers added control and ease of use. Patented package is portable and won't leak or spill. Seals and holds the heaviest gaskets in place during assembly. Solvent-free and low odor. Suitable to 300°F (150°C).

Loctite® 548 Gasket Eliminator Flange Sealant

Patented semi-solid formula is ideal for on-the-spot repairs, or when a conventional gasket is out of stock. Can be applied quickly and neatly on a variety of metal surfaces, including aluminum, to form a flexible, solvent resistant seal. Seals to 300°F (150°C) and fills gaps to 0.010".



No

Are you sealing a rigid or a stamped flange?

Rigid

Stamped

**Loctite® 510
Gasket Eliminator
Flange Sealant**

**Loctite® 587 Blue
RTV Silicone**

**Loctite® Instant
Gasket**

**Loctite® Superflex®
Red High Temp RTV
Silicone**

**Loctite® Superflex®
RTV Silicone
Adhesive Sealant**

Formed-in-place
0.010" (0.25 mm)

Formed-in-place
0.250" (6.35 mm)

Formed-in-place
0.250" (6.35 mm)

Formed-in-place
-

Formed-in-plan
-

Anaerobic

Moisture (RTV)

Moisture (RTV)

Moisture (RTV)

Moisture (RTV)

N.A. / 24 hrs.

50 min.

5 min.

30 min.

30 min.

400°F (204°C) / N.A.

400°F (204°C)
482°F (250°C)

450°F (232°C)
482°F (250°C)

600°F (316°C)

450°F (232°C)

Excellent

Excellent

Excellent

Excellent

Excellent

Excellent

Excellent

Excellent

Excellent

Excellent

Excellent

Excellent

Excellent

Excellent

Excellent

50 ml tube
300 ml cartridge

85 g tube
370 g cartridge

4 oz. can
7 oz. can

80 ml tube
300 ml cartridge

80 ml tube
300 ml cartridge



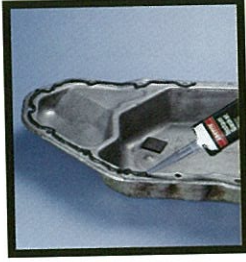
**Loctite® 510
Gasket Eliminator
Flange Sealant**

High temperature. Product has a temperature range to 400°F (204°C) with excellent solvent and chemical resistance. Makes or dresses gaskets in rigid assemblies. Eliminates gasket compression set. UL® listed.



**Loctite® 587
Blue RTV Silicone**

Recommended for sealing all types of flanges including stamped sheet metal. Designed for superior bonding properties to oil contaminated metals. ABS Approved.



**Loctite® Instant
Gasket**

Makes high-performance, leakproof gaskets in one minute. Equipment can be returned to service immediately. Blowout resistant. Outperforms precut gaskets.



**Loctite® Superflex®
Red High Temp RTV
Silicone**

Makes gaskets that resist temperatures to 600°F (316°C) intermittent. Resists aging, weather and thermal cycling without shrinking, cracking or hardening. Fills gaps to 0.25"



**Loctite® Superflex®
RTV Silicone Adhesive
Sealant**

General purpose one-part silicone adhesive sealant cures at room temperature to form a tough rubber seal. Will not slump in overhead or vertical applications. Formulated to withstand extreme temperature cycling, UV light and ozone. Cannot be painted. Available in black, clear and white.



Retaining Securing Cylindrical Assemblies

- Bond non-threaded cylindrical metal assemblies
- High and moderate strength products – can carry high loads and eliminate fretting
- Fill all voids – prevent corrosion
- Reduce the need for close tolerances
- 100% contact – load and stress are distributed evenly over the joint

Is the assembly badly worn?

Helpful Hints:

- If the retaining compound will be applied below 40°F (5 °C), pre-treat with Loctite® 7649 Primer N
- All parts must be clean and dry before sealing – use Loctite® ODC-Free Cleaner & Degreaser
- If the parts have been in contact with washing or cutting fluids containing nitrites, wash with hot water

Yes - Gaps up to
0.020" (0.5 mm)

Low Strength

Solution

Loctite® 660
Quick Metal Retaining
Compound

Loctite® 641 Retaining
Compound

| Strength Required | High | Low |
|-------------------------------------|-----------------------|------------------------|
| Shear Strength (N/mm ²) | 3,335 psi (23) | 1,700 psi (11.7) |
| Diametrical Clearance | Up to 0.020" (0.5 mm) | Up to 0.006" (0.15 mm) |
| Temperature Resistance | 300°F (150°C) | 300°F (150°C) |
| Cure Time (Setup / Full Strength) | 20 min. / 24 hr. | 20 min. / 24 hr. |
| Packaging Sizes – Part Number | 50 ml tube | 50 ml bottle |

* Requires heat cure to achieve temperature resistance

Additional Loctite® brand Retaining Products

| Name | Features |
|---------------------------------|--|
| Loctite® 620 Retaining Compound | Particularly suitable for applications where temperature resistance up to 232°C is required. Requires heat cure to achieve temperature resistance. |

Use Loctite® 7649 Primer N to:

1. Activate inactive surfaces.
2. Speed cure times for faster return to service.
3. Speed curing through larger gaps and deep threads.
4. Substantially speed cure times on cold parts.

Primer is optional with:

Active surfaces: Brass, copper, bronze, iron, soft steel, nickel.

Primer is required with:

Inactive surfaces: Aluminum, stainless steel, magnesium, zinc, black oxide, cadmium, titanium, others.

Package Size: 1.75 oz., 4.5 oz.

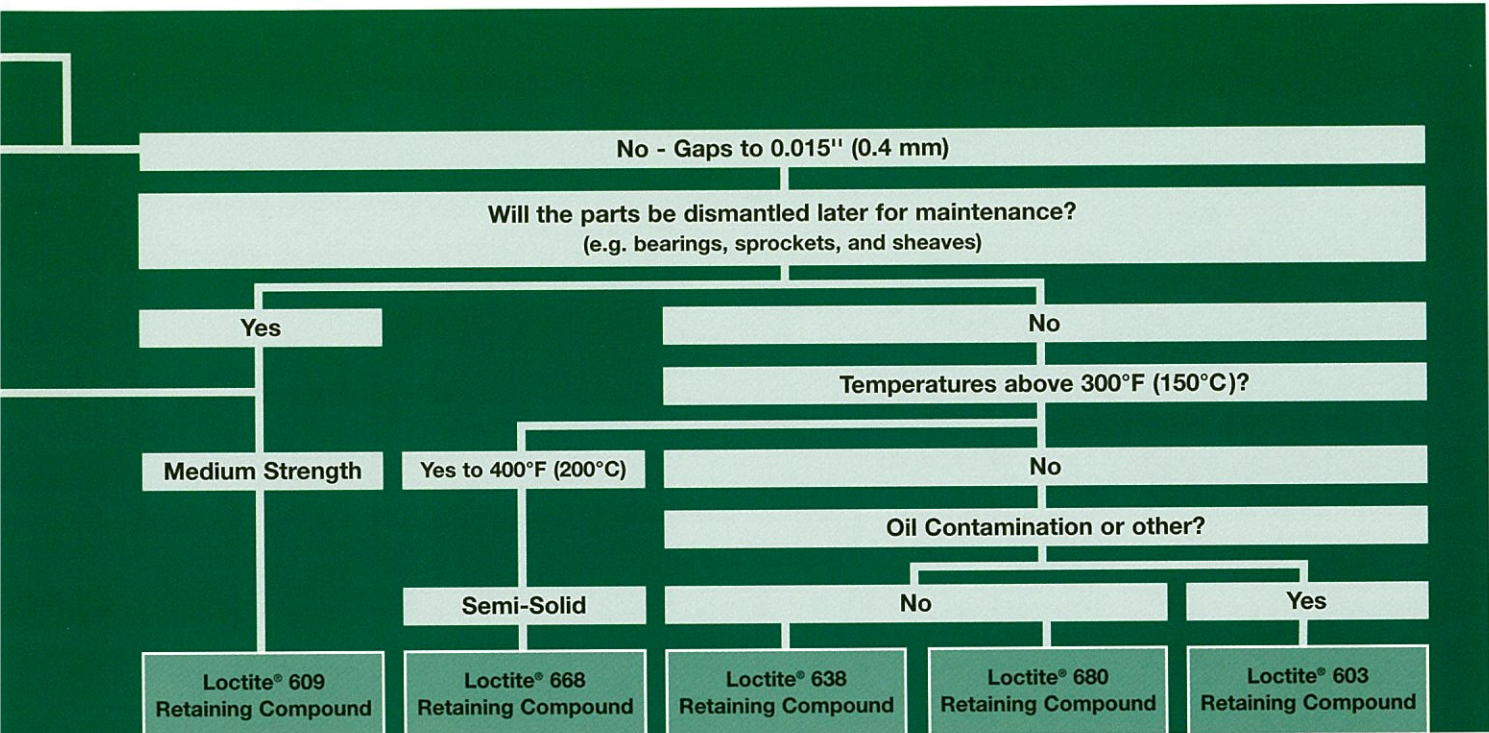


Loctite® 660 Quick Metal® Retaining Compound

Used for repairing worn coaxial parts without remachining; enables reuse of worn bearing seats, keys, splines, tapers, or for retaining shims. CFIA Approved.

Loctite® 641 Retaining Compound

A controlled strength retaining compound that is ideal for cylindrical parts that require disassembly. CFIA Approved.



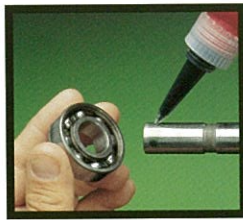
| Loctite® 609 Retaining Compound | Loctite® 668 Retaining Compound | Loctite® 638 Retaining Compound | Loctite® 680 Retaining Compound | Loctite® 603 Retaining Compound |
|---------------------------------|---------------------------------|---------------------------------|---------------------------------|---------------------------------|
| Medium | Medium | High | High | High |
| 2,300 psi (15.8) | 1,870 psi (12.8) | 4,500 psi (31) | 2,800 psi minimum (19.3) | 3,770 psi (26) |
| Up to 0.005" (0.1 mm) | Up to 0.005" (0.1 mm) | Up to 0.015" (0.38 mm) | Up to 0.015" (0.4 mm) | Up to 0.005" (0.1 mm) |
| 300°F (150°C) | 400°F (204°C) | 300°F (150°C) | 300°F (150°C) | 300°F (150°C) |
| 10 min. / 24 hr. | 30 min. / 24 hr. | 10 min. / 24 hr. | 10 min. / 24 hr. | 10 min. / 24 hr. |
| 50 ml bottle 250 ml bottle | 19 g stick – 40391 | 50 ml bottle 250 ml bottle | 50 ml bottle 250 ml bottle | 50 ml bottle 250 ml bottle |



Loctite® 609 Retaining Compound – Press Fit/General Purpose
Recommended for parts that will need subsequent dismantling, i.e. retention of bearings onto shafts and into housings.
Mil-Spec (R-46082B) Type I.



Loctite® 668 Retaining Compound
A high temperature retaining compound in a revolutionary semi-solid formula. Patented, no-mess package offers added convenience and portability. Ideal for gaps up to 0.005" (0.1 mm) on the diameter. Withstands temperatures to 400°F (204°C).



Loctite® 638 Retaining Compound – Slip Fit/Maximum Strength
Maximum strength. For use where high dynamic force or cyclic loading is expected. Locks cylindrical assemblies up to 0.015" (0.38 mm) diameter clearance. Fixtures in 10 minutes.



Loctite® 680 Retaining Compound – Slip Fit/High Strength
Gives best resistance to dynamic, axial and radial loads. Recommended for retaining shafts, gears, pulleys, and similar cylindrical parts.
NSF/ANSI 61 Approved. ABS Approved.



Loctite® 603 Retaining Compound – Press Fit/Oil Tolerant
For retaining close-fitting cylindrical parts, up to 0.005" (0.1 mm) gap, and for use on cylindrical fitting parts where thorough degreasing is not possible. Applications include retaining roller bearings or oil impregnated bushings into housings.



Metal Repair System

- High compressive strength
- Choice of mild steel aluminum or non-metallic fillers
- Can be machined, drilled, or tapped after cure
- Excellent resistance to aggressive chemicals

Repair or rebuild damaged parts

Mild steel

Pourable

Putty

Solution

Loctite® Fixmaster®
Steel Liquid

Loctite® Fixmaster®
Steel Putty

Loctite® Fixmaster®
Fast Set Steel Putty

| | | | |
|---|--|--|-------------------|
| Color | Grey | Grey | Grey |
| Maximum Temperature | 225°F (107°C) | 225°F (107°C) | 200°F (93°C) |
| Working Time* | 25 min. | 30 min. | 3 min. |
| Cure Time* | 6 hrs. | 6 hrs. | 10 min. |
| Compressive Strength psi (N/mm ²) | 13,500 psi (93.1) | 11,100 psi (76.6) | 10,800 psi (74.5) |
| Package Sizes - Part Number | 1 lb. kit - 97483 4 lb. kit - 97484 | 1 lb. kit - 99913 4 lb. kit - 99914 25 lb. kit - 99912 | 1 lb. kit - 39917 |

* at 77°F (25°C)

Additional Products

Name

Loctite® Fixmaster®
Stainless Steel Putty

Loctite® Fixmaster®
Fast Set Steel Epoxy

Loctite® Fixmaster®
Wet Surface Repair Putty



Loctite® Fixmaster® Steel Liquid

High steel content. Pourable liquid filler used for making fixtures and molding. ABS Approved.



Loctite® Fixmaster® Steel Putty

High steel content putty. Recommended for repairing and rebuilding worn steel components, such as bearing and fan housings. ABS Approved.



Loctite® Fixmaster® Fast Set Steel Putty

A fast curing version of steel putty. Recommended for repairing pipes and other emergency repairs. ABS Approved.



What metal are you repairing?

Aluminum

Stainless Steel

Kneadable stick

**High performance
chemical resistance**

Pourable

Putty

**Loctite® Fixmaster®
Metal Magic Steel**

**Loctite® Fixmaster®
Superior Metal Putty**

**Loctite® Fixmaster®
Aluminum Liquid**

**Loctite® Fixmaster®
Stainless Steel Putty**

Dark Grey

Grey

Light Grey

Grey

250°F (121°C)

250°F (121°C)

200°F (93°C)

225°F (100°C)

3 min.

20 min.

20 min.

20 min.

10 min.

6 hrs.

6 hrs.

6 hrs.

12,000 psi (82.7)

18,000 psi (124.1)

17,000 psi (117.3)

12000 psi (82.7)

4 oz. stick – 98853

1 lb. kit – 97473

1 lb. kit – 97453

1 lb. kit



**Loctite® Fixmaster®
Metal Magic Steel™**

Kneadable two-part paste. Working time is 3 minutes – sets in 10 minutes. Adheres to damp surfaces. Can be drilled, filed, and painted. Ideal for emergency sealing of leaking tanks and pipes. Smooths welds, repairs small cracks in castings, and fills oversized bolt holes.



**Loctite® Fixmaster®
Superior Metal Putty**

Formulated with fine alloy particles with high compressive strength and chemical resistance. Recommended for use on all metals. Outstanding compressive strength, chemical resistance, non-rusting.



**Loctite® Fixmaster®
Aluminum Liquid**

Fluid, self-leveling aluminum liquid. Can be poured into molds and cavities. Recommended for casting aluminum replacement parts and for making molds. **ABS Approved.**



**Loctite® Fixmaster®
Stainless Steel Putty**

Similar to Loctite® Fixmaster® Steel Putty but stainless steel filled to better match the coefficient of thermal expansion of stainless steel.



Wear Prevention – Reclaim and Repair

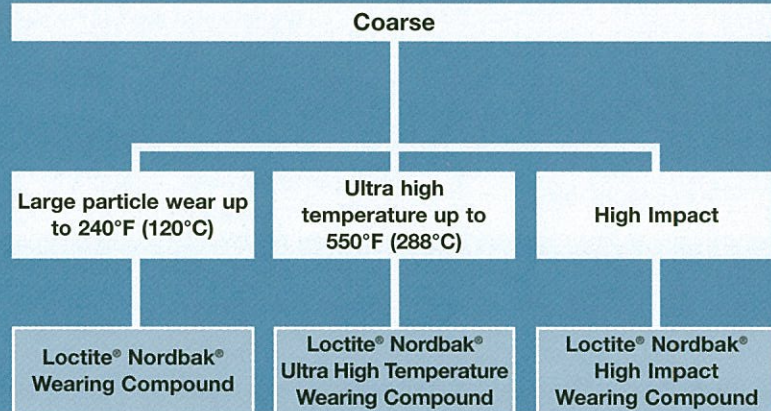
- Restores worn surfaces
- Provides wear and impact resistant coatings
- Use on new parts to extend life
- Available in both trowelable and brushable forms

Fine or coarse particle abrasion?

Helpful Hints:

- Clean surfaces with Loctite® ODC-Free Cleaner & Degreaser
- Use expanded metal to fill large voids
- Roughen surfaces to ensure adhesion

Solution



| | Grey | Red | Grey |
|------------------------------------|---|---|--------------------|
| Color | Grey | Red | Grey |
| Maximum Temperature | 250°F (121°C) | 550°F (287°C) | 250°F (121°C) |
| Mix Ratio by Volume (r:h) | 2 : 1 | 2.44 : 1 | 2 : 1 |
| Working Time* | 30 min. | 30 min. | 30 min. |
| Cure Time* | 7 hrs. | 8 hrs. followed by 2 hrs. post-cure @ 300°F (148°C) | 6 hrs. |
| Package Sizes – Part Number | 5 lb. kit – 99813 25 lb. kit – 99812 | 25 lb. kit – 96392 | 25 lb. kit – 39918 |

* At 77°F (25°C)

Additional Loctite® brand Products

| Name | Temperature |
|---|---------------|
| Loctite® Nordbak® High Temperature Wearing Compound | 450°F (232°C) |
| Loctite® Nordbak® High Temperature Pneu-Wear | 450°F (232°C) |
| Loctite® Nordbak® Ultra High Temperature Pneu-Wear | 550°F (288°C) |
| Loctite® Nordbak® Ceramic Tile Adhesive | 200°F (93°C) |
| Loctite® Nordbak® Combo Bead Wearing Compound | 250°F (121°C) |



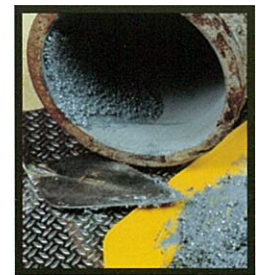
Loctite® Nordbak® Wearing Compound

Trowelable compound that protects against sliding abrasion. Use to rebuild and protect chutes, pump housings, elbows, cyclones, and material handling equipment.



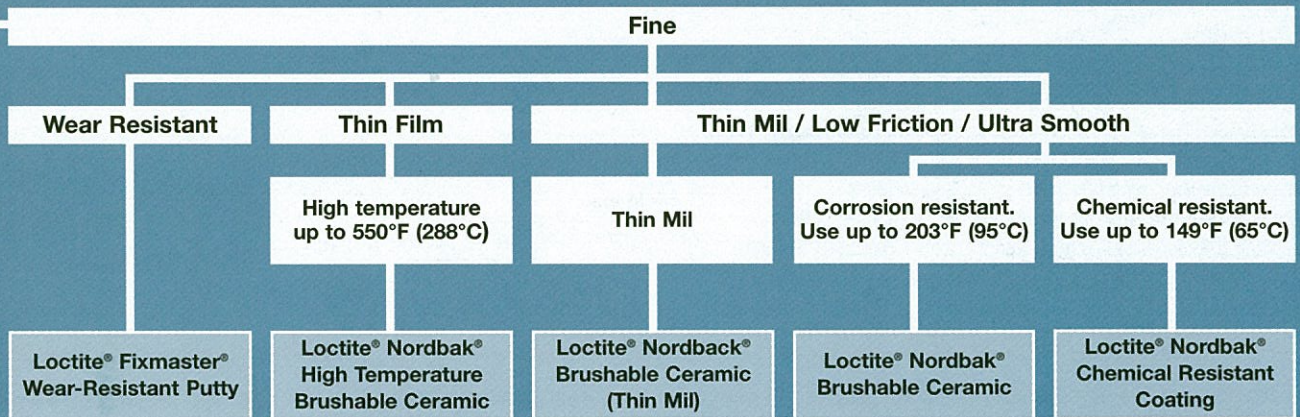
Loctite® Nordbak® Ultra High Temperature Wearing Compound

Resists sliding abrasion and temperatures to 550°F (287°C). Must be post-cured for maximum temperature resistance and performance. Trowelable.

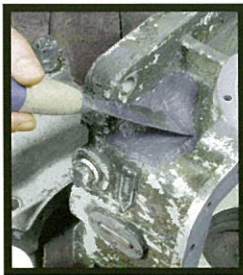


Loctite® Nordbak® High Impact Wearing Compound

Rubber modified compound absorbs impacts. Recommended where both sliding abrasion and impacts are present.



| | | | | |
|--|---|---|---|--------------------|
| Grey | Red | Grey/Blue/Black | Grey or White | Grey |
| 225°F (107°C) | 550°F (287°C) | 200°F (93°C) | 200°F (93°C) | 150°F (66°C) |
| 2 : 1 | 2.6 : 1 | 2.75 : 1 | Grey 2.75 : 1/White 2.8 : 1 | 2.3 : 1 |
| 30 min. | 120 min. | 30 min. | Grey 30 min. White 15 min. | 20 min. |
| 8 hrs. | 8 hrs. followed by 3 hrs. post-cure @ 300°F (148°C) | 6 hrs. | Grey 6 hrs. White 5 hrs. | 16 hrs. |
| 1 lb. kit – 98742 3 lb. kit – 98743 | 2 lb. kit – 96433 | 2 lb. kit grey – 40592 2 lb. kit blue – 40591 2 lb. kit black – 40590 | 2 lb. kit grey – 98733 2 lb. kit white – 96443 6 lb. kit grey – 98732 | 12 lb. kit – 96092 |



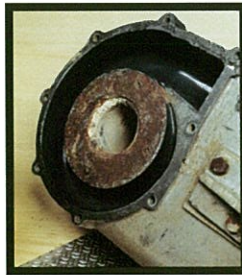
Loctite® Fixmaster® Wear-Resistant Putty

Ceramic fibers give this trowelable putty excellent wear and abrasion resistance properties. Cures to a smooth, low friction surface. For surfaces exposed to wear, erosion and cavitation.



Loctite® Nordbak® High Temperature Brushable Ceramic

Provides protection against turbulence, abrasion, and cavitation up to 550°F (287°C). Must be post-cured for maximum temperature resistance and performance.



Loctite® Nordbak® Brushable and Thin Mil Brushable Ceramic

Brushes on to form a smooth corrosion-resistant coating. Protects against turbulence, abrasion and cavitation. Can also be used as a top coat over Loctite® Nordbak® wearing compounds for surface rebuilding and lasting protection. Resists temperatures up to 200°F.



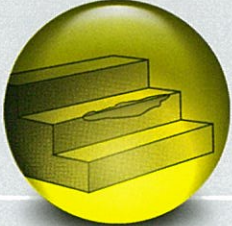
Loctite® Nordbak® Brushable Ceramic

Smooth, wear resistant, low friction coating to combat turbulence and cavitation on components such as pump housings and impellers. Grey version is approved for use in potable water systems, NSF/ANSI 61 Approved. ABS Approved.



Loctite® Nordbak® Chemical Resistant Coating

Smooth, glossy, low friction finish protects against turbulence, abrasion, and cavitation. This advanced epoxy protects equipment from extreme chemical attack and corrosion. Low viscosity epoxy can be applied by brush.



Grouting, Floor and Concrete Repair

- Chemical and corrosion resistance
- Self-leveling
- Stronger than concrete
- Bonds to concrete, wood, metals, brick, and other common building materials

Grouting and Floor Repair

Helpful Hints:

- Vary consistency of Loctite® Fixmaster® Magna-Crete for vertical applications
- Use Loctite® Fixmaster® Magna-Crete for cold storage applications
- No concrete bonding agents are required
- Use a backer rod when filling deep expansion joints
- Use Loctite® Fixmaster® Fast Set Grout to set anchor bolts
- Replace traditional steel chocks with Loctite® Fixmaster® Marine Chocking for mounting equipment in the marine industry

Filling Expansion Joints

Grouting

Solution

Loctite® Urethane Sealant

Loctite® Fixmaster® Deep Pour Grout

| | | |
|---|------------------|--------------------|
| Color | Limestone | Black |
| Maximum Temperature | 180°F (82.2°C) | 225°F (107°C) |
| Compressive Strength (N/mm ²) | N.A. | 14,500 psi (100) |
| Working Time | 60 min. | 30 min. |
| Functional Cure | 3 days | 24 hrs. |
| Chemical Resistance | Fair | Good |
| Packaging Sizes – Part Number | 10.2 oz. – 39916 | 5 gal. kit – 99545 |

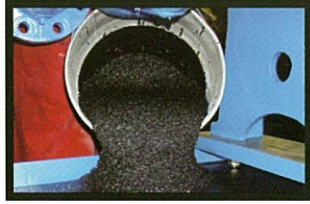
* Requires heat cure to achieve temperature resistance

Additional Loctite® brand Repair Products

| Name | Color | Sizes |
|---|-------|------------|
| Loctite® Fixmaster® Magna-Crete Winter Additive | N.A. | 1 lb. |
| Loctite® Fixmaster® Magna-Crete Summer Additive | N.A. | 1 lb. |
| Loctite® Fixmaster® Fast Set Grout | Red | 2 gal. kit |
| Loctite® Fixmaster® Super Grout | Red | 5 gal. kit |



Loctite® Urethane Sealant
 Single component, gun-grade caulk that bonds, seals, and waterproofs up to 180°F (82.2°C). Outstanding adhesion properties to concrete, masonry, glass, plastics, wood, aluminum, and most other metals.



Loctite® Fixmaster® Deep Pour Grout
 Aggregate-filled, epoxy system for pours up to 6" deep, including self-leveling applications under rails and sole plates. High strength material bonds to steel, concrete, and itself. Withstands high torque load.



Floor and concrete rebuilding

Extreme Chemical Resistant

Small Area

Fast Cure

High Strength

Loctite® Fixmaster® Marine Chocking

Loctite® Fixmaster® Concrete Repair Epoxy

Loctite® Fixmaster® Magna-Crete

Loctite® Fixmaster® Floor Fill

Loctite® Fixmaster® High Performance Quartz

| | | | | |
|--|---------------------|--|--|--------------------|
| Green or Orange | Grey | Grey | Grey | Grey |
| 250°F (121°C) | 250°F (121°C) | 2,000°F (1,093°C) | 225°F (107°C) | 150°F (66°C) |
| 22,000 psi (151.7) | 12,000 psi (82.7) | 13,000 psi (89.6) | 15,000 psi (103.4) | 12,000 psi (82.7) |
| 10-15 min. | 4-7 min. | 15 min. | 40-60 min. | 45 min. |
| 24 hrs. | 1 hr. | 1 hr. | 24 hrs. | 24 hrs. |
| Excellent | Good | Fair | Good | Excellent |
| 2 gal. kit green – 97572 2 gal. kit orange – 96102 1 gal. kit orange – 37316 | 4 oz. stick – 39366 | 1 gal. kit – 95551 5 gal. kit – 95555 | 10 lb. kit – 99361 40 lb. kit – 99365 | 42 lb. kit – 96495 |



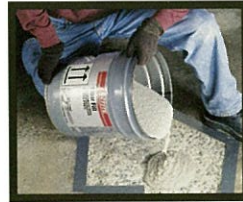
Loctite® Fixmaster® Marine Chocking
Self-leveling, fast-curing, non-shrinking grout. Outstanding chemical and vibration resistance and compressive strength to withstand maximum loads. **ABS Approved.**



Loctite® Fixmaster® Concrete Repair Epoxy
Enables permanent repairs to concrete and masonry. Convenient stick contains pre-measured portions of activator and base. Once cured can be tapped, drilled, screwed, sawed, filed or painted, and will have an appearance and texture similar to concrete.



Loctite® Fixmaster® Magna-Crete
This two-component magnesium phosphate cement sets rapidly and has a very high early strength. Ideal for road and aircraft runway repairs, which can typically be driven over after 45 minutes. It bonds to new and old concrete as well as most construction materials including wood, glass, and steel. No water additive, so it can be applied at temperatures as low as -15°F (-26°C).



Loctite® Fixmaster® Floor Fill
A three-component, self-leveling, non-shrinking epoxy floor repair system. 100% solids, epoxy-based system for repairing holes in floors, spalled areas, ramps, stairs, cracks in floors, and for use in grouting applications. Stronger than concrete, it bonds to almost any clean substrate and provides corrosion and chemical resistance.



Loctite® Fixmaster® High Performance Quartz
A highly-filled, quartz epoxy system designed to protect old or new concrete from chemical attack. Provides a surface resistant to concentrated acids, alkalis, and solvents. Areas damaged by chemical attack may be resurfaced with HPQ. Easily applied, trowelable system that should be applied at a minimum 1/4" (6.35 mm) build to provide maximum chemical resistance.



Anti-Slip Traction System

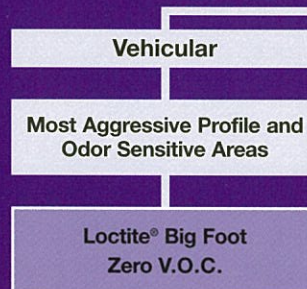
- Chemical resistance
- Designed to increase the Coefficient of Friction (COF)
- Exceeds OSHA COF recommendations

Anti-Slip Coatings

Helpful Hints:

- Most formulas can be rolled, sprayed, or troweled
- Finished flooring is easily cleaned with a biodegradable cleaner/degreaser
- Remove any oil, grease, dirt, or water prior to application
- Test for the presence of water to determine if floor can be coated

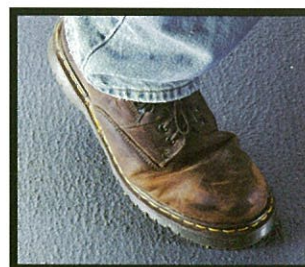
Solution



| | |
|---|---|
| Color | Yellow, Tile Red, Green, Grey |
| Coefficient of Friction (Dry/Wet) | 1.10 / 1.00 |
| Coverage per Gallon (ft ² /meter ²) | 35 ft ² (3.3 m ²) |
| Working Time | 1 hr. |
| Drying Time (Light Pedestrian Traffic / Heavy Pedestrian Traffic) | 24 / 72 hrs. |
| Package Sizes – Part Number | 1 gallon kit grey – 39915 1 gallon kit black – 96231 |

Additional Loctite® brand Products

| Name | Used on or with |
|---|---|
| Loctite® Big Foot Metal Primer | Metal |
| Loctite® Big Foot Acrylic Primer | Loctite® Big Foot Acrylic Pedestrian Grade |
| Loctite® Big Foot Water-Based Primer/Sealer | Porous Surfaces (ex. Concrete, wood, tile) |
| Loctite® Mixer Blades | To mix all 1 gallon kits of Loctite® Big Foot flooring compounds |
| Loctite® Big Foot Vehicular Grade | Withstands even the heaviest rolling equipment traffic. Resists liquids as harsh as jet fuels and hydraulic fluids. Superior adhesion forms a solid bond to metal, concrete, and wood. Black and Grey colors. |
| Loctite® Big Foot Acrylic Pedestrian Grade | A single-component, elastomeric, anti-slip floor and deck coating for optimum adhesion to asphalt and flexible applications. Best for outdoor applications. Grey color. |



Loctite® Big Foot Zero V.O.C.

This 100% reactive, solvent-free epoxy has the most aggressive profile in the Big Foot line. Use in odor-sensitive areas such as wineries, food processing plants, hospitals, or confined spaces.



Skid proofing for safety purposes

Do you have pedestrian or vehicular traffic?

Pedestrian

**Heavy Pedestrian or
Light Rolling Traffic**

**Loctite® Big Foot Heavy
Duty Pedestrian Grade**

Yellow, Tile Red, Green,
Black, Grey

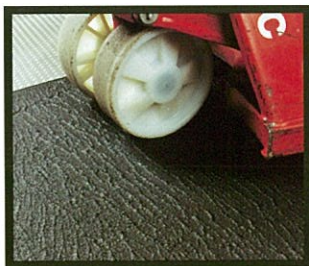
1.17 / 1.00

50 ft² (4.7 m²)

N.A.

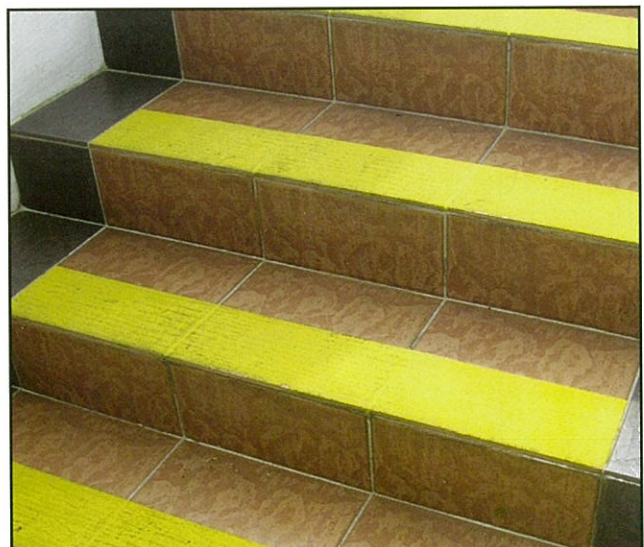
12 / 72 hrs.

- 1 gallon can black - 96211
- 1 gallon can grey - 96261
- 5 gallon pail grey - 96265
- 1 gallon can yellow - 40302
- 5 gallon pail yellow - 40303



**Loctite® Big Foot
Heavy Duty
Pedestrian Grade**

For areas with heavy pedestrian or light rolling traffic. Ideal for ramps, walkways, locker rooms, stairs, and assembly areas.





Rubber and Belt Repair

- Repair gouges, cuts, and worn edges on rubber belting
- Non-shrinking and unaffected by oil, grease, and water
- Excellent flexibility and elongation

Conveyor Belt Repair

Helpful Hints:

- Loctite® Fixmaster® Rapid Rubber Repair 400 ml cartridges and kit require Loctite® Rapid Rubber Repair Dispenser, Part Number 39635
- Loctite® Fixmaster® Instant Belt Repair requires heat
- Loctite® Fixmaster® Instant Belt Repair can be applied at any temperature
- Use the recommended accessory products to ensure maximum adhesion and product reliability

Temporary

Solution

Loctite® Fixmaster®
Instant Belt Repair

| | |
|---------------------------------------|-------------------|
| Color | Amber |
| Working Time | N.A. |
| Tensile Strength (N/mm ²) | 400 psi (2.7) |
| Functional Cure | 30 min. |
| Package Sizes – Part Number | 1 lb. kit – 37719 |

Additional Loctite® brand Products

| Name | Features |
|--|---|
| Loctite® Fixmaster® Flex Rubber Primer | One-part system designed to properly prime rubber and urethane surfaces for application of Flex urethane products |
| Loctite® Fixmaster® Etching Agent | Enhances bonds to natural, SBR, and butadiene rubber |
| Loctite® Fixmaster® Flex Accelerator | Speeds the cure of Flex urethanes |
| Loctite® Fixmaster® Flex Cleaner | Cleans rubber, urethane or metal |



Loctite® Fixmaster® Rapid Rubber Repair Dispenser

Easy-to-use applicator for the Loctite® Fixmaster® Rapid Rubber Repair Kit.

Part Number: 39635



Loctite® Fixmaster® Instant Belt Repair

A single-component, heat-curing material for fast, temporary belt repairs. Requires no priming. Equipment can be operated in 30 minutes.



Is this a temporary or a long term repair?

Long Term

Do you require a fast return to service or a long working time?

Fast Return to Service

Longer Working Time

Loctite® Fixmaster®
Rapid Rubber Repair

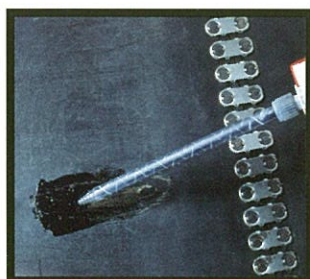
Loctite® Fixmaster®
Flex 80 Putty

Loctite® Fixmaster®
Flex 80 Liquid

Black
1 min.
1,300 psi (8.9)
2 hrs.
400 ml kit – 96677
400 ml cartridge – 96675
150 ml coaxial cart. – 96676

Black
10 min.
1,500 psi (10.3)
8 hrs.
1 lb. kit – 97423
6 lb. kit – 97422

Black
20min.
1800 psi
8 hrs.
1 lb. kit – 97413
6 lb. kit – 97412



Loctite® Fixmaster® Rapid Rubber Repair

Our premium quality, belt repair product is designed to repair conveyor belts and other damaged rubber quickly and easily. Repairs will have the same durability and flexibility as the belt. The 400 ml cartridge requires the use of a Loctite® Fixmaster® Rapid Rubber Repair Dispenser. Also available in a kit with etching agent and cleaner.



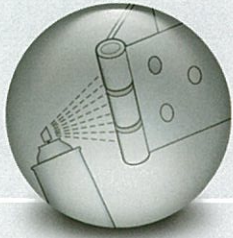
Loctite® Fixmaster® Flex 80 Putty

A trowelable, two-part urethane for rebuilding and repairing rubber parts and linings, providing impact, abrasion, and corrosion resistant protection. Use Flex accessory products to properly etch, clean, and prime surfaces. **ABS Approved.**



Loctite® Fixmaster® Flex 80 Liquid

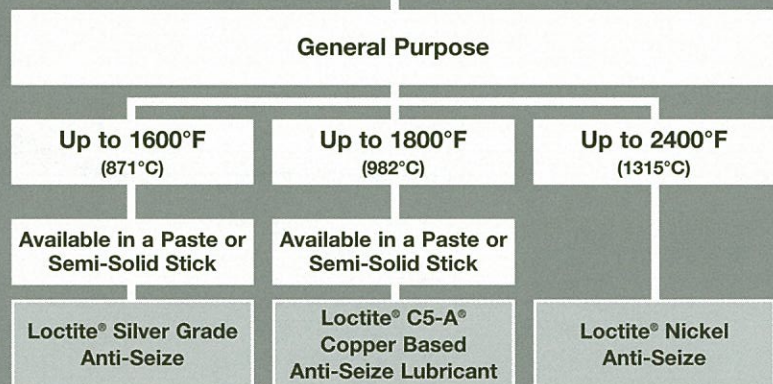
A castable, two-part urethane for making molds, fixtures, expansion joint and non-scratching holding fixtures. Suitable for casting molds, fixtures parts, impellers, feeder bowls and Forming Expansion Joints.



Anti-Seize Lubricants

- Protect against rust, corrosion, seizing, and galling
- Provide lubrication in extreme environments

What type of Anti-Seize do you require?



Solution

| | | | |
|------------------------------------|--|--|--|
| Color | Silver | Copper | Silver |
| Solid Lubricating Agent | Graphite/Aluminum | Copper/Graphite | Nickel/Graphite |
| Torque Coefficient* | 0.18 | 0.16 | 0.13 |
| Temperature Range | -20°F to 1600°F (-29°C to 870°C) | -20°F to 1800°F (-29°C to 982°C) | -20°F to 2400°F (-29°C to 1315°C) |
| Metal-Free | No | No | No |
| Package Sizes – Part Number | 8 oz. brushtop – 76732 1 lb. brushtop – 76764 20 g stick – 37783 12 oz. aerosol – 76759 | 8 oz. brushtop – 51147 1 lb. brushtop – 51007 20 g stick – 37782 12 oz. aerosol – 51003 | 8 oz. brushtop – 77124 1 lb. brushtop – 77164 12 oz. aerosol – 51286 |

* K value on steel nuts and bolts

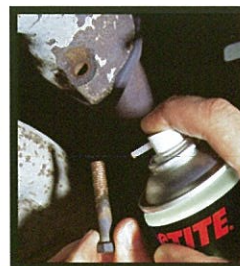
Additional Loctite® brand Anti-Seizes

| Name | Max Temp | Features |
|---|-----------------|---|
| Loctite® White Hi-Temp Anti-Seize | 2000°F (1093°C) | Non-metallic, high temp |
| Loctite® N-1000 High Purity Anti-Seize | 1800°F (892°C) | Power plant, copper based |
| Loctite® N-5000 High Purity Anti-Seize | 2400°F (1315°C) | Power plant, nickel based |
| Loctite® High Performance N-5000 High Purity Anti-Seize | 2400°F (1315°C) | Power plant, nickel based, high lubricity |
| Loctite® N-7000 High Purity Anti-Seize | 2400°F (1315°C) | Power plant, metal-free |
| Loctite® Moly-50 Anti-Seize | 750°F (399°C) | Thread lubricant |
| Loctite® Graphite-50 Anti-Seize | 900°F (482°C) | Electrically conductive, nonmetallic |
| Loctite® Moly Paste | 750°F (399°C) | Withstands extreme pressure, heavy loads |



Loctite® Silver Grade Anti-Seize

Heavy duty, temperature resistant, petroleum-based lubricant compound fortified with graphite and metallic flake. Inert and will not evaporate or harden in extreme cold or heat. For use in assemblies up to 1600°F (871°C). ABS Approved. Tested to MIL-PRF-907E. CFIA Approved.



Loctite® C5-A® Copper Based Anti-Seize Lubricant

Exclusive formula suspends copper and graphite in a high quality grease. Protects metal parts from rust, corrosion, galling, and seizing at temperatures to 1800°F (982°C). Tested to MIL-PRF-907E. CFIA Approved.



Loctite® Nickel Anti-Seize

Copper-free. Recommended for stainless steel and other metal fittings. For preventing corrosion, seizing, and galling in harsh, chemical environments, and temperatures to 2400°F (1315°C). ABS Approved.



Stainless Steel and Titanium Applications

Soft Metal Applications

Incidental Food Contact

Water Resistant

Loctite® Heavy Duty Anti-Seize

Loctite® Zinc Anti-Seize

Loctite® Food Grade Anti-Seize

Loctite® Marine Grade Anti-Seize

Black
Graphite/Calcium Fluoride
0.16
-20°F to 2400°F
(-29°C to 1315°C)
Yes
9 oz. brushtop – 51605
1.2 lb. brushtop – 51606

Grey
Zinc
0.15
-20°F to 750°F
(-29°C to 399°C)
No
1 lb. can – 39901

White
White Lubricating Solids
0.13
-20°F to 750°F
(-29°C to 399°C)
Yes
8 oz. brushtop – 51168
2 lb. can – 51170

Black
Calcium Sulfonate
0.18
-20°F to 2400°F
(-29°C to 1315°C)
Yes
8 oz. brushtop – 34395
16 oz. brushtop – 34026



Loctite® Heavy Duty Anti-Seize
Metal-free. Excellent lubricity. Provides outstanding lubrication to all metals including stainless steel, aluminum, and soft metals up to 2400°F (1315°C).



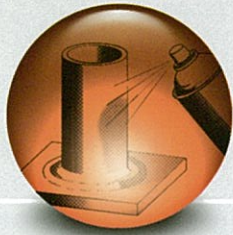
Loctite® Zinc Anti-Seize
Protects aluminum and ferrous surfaces from seizure and corrosion up to 750°F (399°C).



Loctite® Food Grade Anti-Seize
Prevents seizure, galling, and friction in stainless steel and other metal parts up to 750°F (399°C). NSF H1 rated for incidental food contact.



Loctite® Marine Grade Anti-Seize
Formulated to protect assemblies exposed directly or indirectly to fresh and salt water, this anti-seize works especially well in high humidity conditions. It has excellent lubricity, superior water wash-out spray resistance, and prevents galvanic corrosion. ABS Approved.



Rust Treatment and Cleaning

■ Clean and degrease work surfaces, parts, and hands

Rust Treatment and Cleaning

Electrical Contacts

Solution

Loctite® Electrical Contact & Parts Cleaner

Loctite® Non-Flammable Electrical Contact Cleaner

KB Values*

Package Sizes – Part Number

38

93

11 oz. aerosol – 25791

14 oz. aerosol – 36646

* Kauri-Butanol Value tested to ASTM D 1133. (This test method covers the determination of the relative solvent power of hydrocarbon solvents.)

Additional Products

| Name | Size |
|--|-------------------|
| Loctite® Multi-Purpose Glass Cleaner | 18.75 oz. aerosol |
| Loctite® Non-Chlorinated Parts Cleaner | 14.75 oz. aerosol |

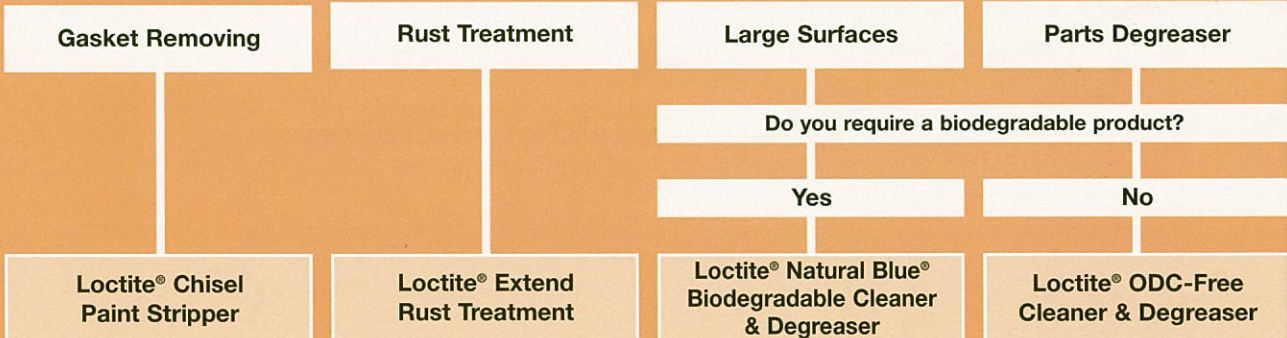


Loctite® Electrical Contact & Parts Cleaner

Fast-evaporating cleaner removes grease, oil, and other contaminants from electrical parts and mechanical equipment. Contains no CFCs or HCFCs and is safe on most plastics. Non-conductive and non-corrosive.

Loctite® Non-Flammable Electrical Contact Cleaner

Removes grease, oil, and other contaminants from electrical parts to prevent contact failure. Dries residue-free in seconds. Contains no HCFCs or CFCs.



| | | | |
|------------------------|---|---|---|
| greater than 200 | N.A. | N.A. | 34 |
| 18 oz. aerosol – 79040 | 10.05 oz. aerosol – 30539 1 qt. bottle – 75430 1 gallon bottle – 75448 5 gallon pail – 75465 | 4 fl. oz. bottle – 82244 24 fl. oz. spray bottle – 82249 1 gallon bottle – 82251 5 gallon pail – 82253 15 gallon pail – 82254 55 gallon drum – 82255 | 15 oz. aerosol – 22355 16 oz. pump spray – 20162 1 gallon can – 20260 |



Loctite® Chisel Paint Stripper
Removes gaskets from any type of assembly in 10 to 15 minutes. Prepares metal parts for new gaskets, eliminating scraping and sanding. Works on wood; non-corrosive on aluminum. Not for use with plastics, linoleum, or synthetic fibers.



Loctite® Extend Rust Treatment
Converts existing rust into a stable base. Cured product acts as a primer ready for painting. Protects surfaces from corrosion. Use on metal pipes, valves, fittings, storage tanks, fences, guard rails, conveyors, construction and agricultural equipment. **ABS Approved.**



Loctite® Natural Blue® Biodegradable Cleaner & Degreaser
Biodegradable, all-purpose, industrial strength, concentrated cleaner and degreaser. Can be economically diluted with water. Formulated for wipe down, pressure spraying, and immersion cleaning processes at room temperature or heated. Non-flammable and non-toxic. Contains no ODCs. Available in pine scent or unscented formulas.



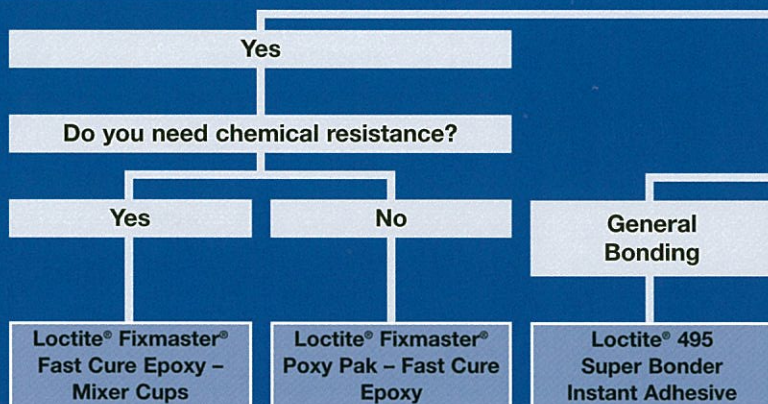
Loctite® ODC-Free Cleaner & Degreaser
A non-aqueous, hydrocarbon-based solvent designed for cleaning and degreasing surfaces to be bonded with adhesives, as well as for general purpose industrial cleaning. Safe on aluminum, rubber, and most plastics, and will not cause flash rusting on water-sensitive parts. Dries residue-free. Contains no ozone-depleting compounds. (Formerly referenced as Loctite® 7070).



Bonding

- Assemble parts quickly and easily
- Repair broken parts
- Bond dissimilar parts

Is your bond filling a void and does it need to be machinable?



Solution

| | Loctite® Fixmaster® Fast Cure Epoxy – Mixer Cups | Loctite® Fixmaster® Poxy Pak – Fast Cure Epoxy | Loctite® 495 Super Bonder Instant Adhesive |
|-----------------------------|--|--|--|
| Color | Grey | Clear | Clear |
| Fixture Time | 10 min. | 4-6 min. | 20-40 seconds |
| Temperature Resistance | Up to 180°F (82°C) | Up to 300°F (150°C) | Up to 180°F (82°C) |
| Package Sizes – Part Number | Can of 10 0.12 fl. oz. cups – 21425 Can of 10 1 oz. cups – 21426 4 pack 0.12 fl. oz. cups – 39088 | 1 oz. syringe – 81120 | 1 oz. bottle 1 lb. bottle |

| Additional Products | |
|---|--|
| Name | Features |
| Loctite® Black Contact Adhesive | Flexible, resists gasoline, waterproof |
| Loctite® Contact Adhesive | Flexible, withstands freezing temperatures |
| Loctite® All Purpose Spray Adhesive | Water resistant spray |
| Loctite® Maximum Strength Headliner Adhesive | Resists extreme weather conditions |
| Loctite® Fixmaster® 4 Minute Epoxy | Translucent, fast curing |
| Loctite® Fixmaster® General Purpose Epoxy – Mixing Cups | Single use, bonds porous and non-porous surfaces |
| Loctite® Fixmaster® High Performance Epoxy | Fiberglass reinforced, shock resistant |



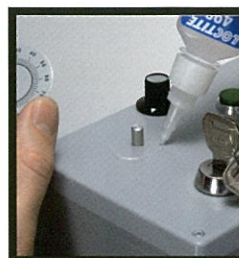
Loctite® Fixmaster® Fast Cure Epoxy – Mixer Cups

Premeasured epoxy mixer cups. Bonds in 5-15 minutes. Excellent chemical resistance. Fills porosities and can be used to build up worn parts. Ideal for bonding glass, hard plastics, rubber, and metal.



Loctite® Fixmaster® Poxy Pak – Fast Cure Epoxy

This fast-cure, high-strength, thick liquid reaches handling strength in 4-6 minutes. Bonds virtually any material to repair, fill and seal holes, cracks, and worn surfaces. ABS Approved.



Loctite® 495 Super Bonder Instant Adhesive

This general-purpose instant adhesive liquid is the one adhesive everyone needs in their toolbox for general maintenance and repair. It sets instantly. No clamping, no mixing, no waiting. Designed to bond rubber, metal and plastic parts.



No

What are you bonding?

Rubber

Porous

Metal / More
Reliable

Metal / Non-Porous

Difficult to
Bond Surfaces

Loctite® 480
Prism®
Instant Adhesive

Loctite® 454 Prism®
Instant Adhesive

Loctite® E-20HP
Hysol® Epoxy
Adhesive

Loctite® 330
Depend Adhesive

Loctite® 401 Prism®
Instant Adhesive

Black

Clear

Off-White

Amber

Clear

90 seconds

15-90 seconds

20 seconds

1-2 min.

15 sec.

180°F (82°C)

Up to 180°F (82°C)

350°F (177°C)

Up to 250°F (121°C)

Up to 180°F (82°C)

20g bottle
1 lb bottle

20 g tube

50 ml cartridge
200 ml cartridge

25 ml syringe kit
315 ml cartridge

20 g bottle



Loctite® 480 Prism® Instant Adhesive

Low viscosity elastomer-modified Instant Adhesive. Impact resistant. Suitable to bond metals and rubbers, excellent peel, impact and shear strength NSF/ANSI 6 certified.



Loctite® 454 Prism® Instant Adhesive

The ideal adhesive for porous substrates, Loctite® 454 Prism® Instant Adhesive is a clear gel. As a surface insensitive cyanoacrylate, it is ideal for difficult-to-bond substrates, including rough, porous and acidic surfaces. Need to bond something on a vertical surface? This gel formulation won't run off before you put substrates together. ABS Approved.



Loctite® E-20HP Hysol® Epoxy Adhesive

A high strength epoxy with a 20-minute work life. Off-white, toughened, high peel and high shear.



Loctite® 330 Depend Adhesive

Loctite® 330 Depend Adhesive sets in just minutes to a tough acrylic adhesive with high peel and impact strength. Bonds almost all combinations of materials, including glass. No-mix kit includes activator and adhesive.



Loctite® 401 Prism® Instant Adhesive – Surface Insensitive

A general purpose adhesive for difficult-to-bond surfaces.



Kits, Specialty, and Emergency Repair Products

- Enables rapid repair of damaged or burst pipes, conveyor or drive belts, and similar rubber-based components
- Will seal leaks in tanks and other containment vessels in addition to repairing metal parts
- Includes a kit for repairing or replacing damaged o-ring seals

Emergency Repair

Helpful Hints:

- Use Loctite® Fixmaster® Rapid Rubber Repair Dispenser with Loctite® Fixmaster® Rapid Rubber Repair Kit

Replace or repair o-ring seals

Repair stripped threads

Stop pipe leaks

Underwater repairs

Solution

Loctite® O-Ring Making Kit

Loctite® Form-A-Thread® Stripped Thread Repair Kit

Loctite® Pipe Repair Kit

Loctite® Fixmaster® Underwater Repair Epoxy

Part Number

00112
Inches sizes 3/32", 3/16", 1/8", 1/4"

28654

2" x 6' (5 x 182 cm) tape – 96321
4" x 12' (10 x 365 cm) tape – 96322

4 oz. stick – 82093



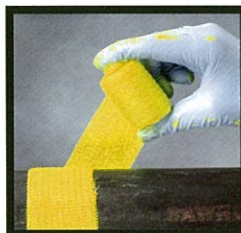
Loctite® O-Ring Making Kit

Eliminates the need for an inventory of different sized o-rings. Joints resist water and oil and are as strong as the rubber itself. Contains 3 ft. (5.48 m) lengths of common diameters of Buna N cord, Loctite® 404 Quick Set Instant Adhesive, o-ring fixture, blade, water-proofing solution, and cleanup solution.



Loctite® Form-A-Thread® Stripped Thread Repair Kit

Permanently repairs stripped threads and fasteners in five minutes (up to SAE Grade 5 English and 8.8 metric). Allows up to 128 lb. (28 kg) in torque and 300°F (150°C). Resists most shop fluids.



Loctite® Pipe Repair Kit

No tools required. Cures in 30 minutes. Easy-to-use repair kit. Use for temporary/medium term repair of leaking pipes, and reinforcement of weak areas. Kit contains protective gloves, Loctite® Metal Magic Steel Stick, and urethane-impregnated fiberglass tape.



Loctite® Fixmaster® Underwater Repair Epoxy

This putty-like material is ideal for plumbing, irrigation, and marine applications because it is unaffected by chlorinated or salt water. It is hand kneadable and fully cures in 1 hour.



Accessories

- Loctite® brand accessories are specially designed to make application and use of Loctite® brand products fast, precise, clean, and economical.



Loctite® Bottle Hand Pump

This hand held applicator is a low-cost, precision bottle top applicator that mounts easily on the top of any Loctite® brand 50 ml or 250 ml bottle.

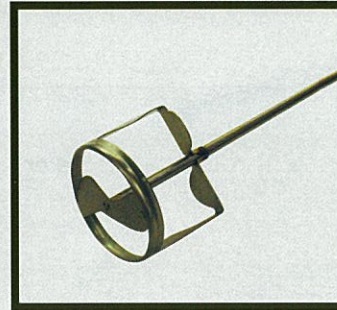
Item # 97001
98414



Loctite® Phenolic Roller and Loctite® Bristle Roller

These rollers are recommended for applying the Loctite® brand Big Foot range of flooring compounds. The Loctite® Phenolic Roller gives a rough surface and the Loctite® Bristle Roller is used for applying primers and sealers.

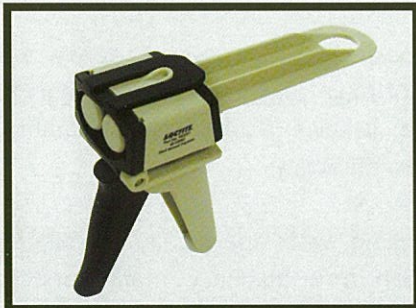
Phenolic Roller: 96121
Bristle Roller: 96153



Loctite® Mixer Blades

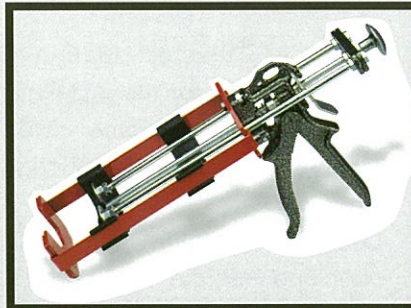
For use with all 1 gallon kits of Loctite® brand Big Foot flooring compounds.

Item# 96131



Loctite® Manual Applicator

Two-component epoxies are dispensed through hand held, manually operated, meter-mix dispensers. These dispensers provide a convenient, cost-effective method to apply product with minimal waste.



Loctite® Fixmaster® Rapid Rubber Repair Dispenser

Easy-to-use applicator for the Loctite® Fixmaster® Rapid Rubber Repair Kit.

Item# 39635



Loctite® Fixmaster® Rapid Rubber Repair Static Mixers

These mixing nozzles are for use with Loctite® Fixmaster® Rapid Rubber Repair Urethane in the 400 ml cartridge. Packaged in bags of

Loctite® Marine Specialty Products

Loctite® Freeze & Release



Loctite® Freeze & Release instantly chills seized and rusted parts (nuts, studs) down to -43°C. The exceptional shock-freeze effect creates microscopic cracks in the layer of rust, allowing the lubricating ingredient to wick directly into the rust by capillary action. The assembly can be dismantled after allowing 1-2 minutes reaction time.

- Shock freezing (-43°C) is a quick and convenient method for releasing seized and corroded parts. It provokes differential thermal expansion of the parts due to the abrupt, nearly instantaneous chill-down, which creates microscopic cracks in the layer of the rust to allow penetration of the lubricating ingredient.
- Capillary effect* achieves fast and efficient wicking of the lubricating ingredient into the layer of rust.
- Released parts remain lubricated and protected from erosion.

* Capillary effect is the ability of liquids to freely wet the surface of objects and wick quickly into hairline cracks (even up a height against the force of gravity)

Loctite® Fixmaster® Marine Chocking



Loctite® Fixmaster® Marine Chocking is a two-part epoxy recommended for the installation of main engines and other heavy machinery. Achieves 100% surface coverage, precise equipment alignment, high compressive strength and long term durability.

Loctite® Fixmaster® Marine Chocking was specifically designed for chocking marine main propulsion and auxiliary machinery. Shipboard applications include: Sterntube and Strut Bearings, Rudder Bearings, Pedestal Bearings, Steering Gears, Stern Engine Room Pumps, Cargo Pumps, Cable Penetrations, Lift Roller Bearings, Bow Thrusters and Anchor Windlasses.

Loctite® Marine Emergency Repair & Maintenance Kit



A “must have” solution kit for general maintenance and emergency repair for every vessel. The Marine Maintenance & Emergency Repair Kit provides solutions from simple vibration-proof bolt fastening to emergency pipe repair in open sea. Applications include thread locking, thread sealing, retaining, flange sealing & gasketing, emergency metal rebuilding & pipe repair, anti seize and bonding.

The kit contains the following products.

- Fastening & Joining
- Thread Sealing
- Thread Locking
- Retaining
- Gasketing
- Anti-seize
- Loctite® Pipe Repair Kit
- Epoxies Metal Repair

Loctite® Color Guard

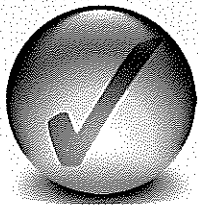


Loctite® Color Guard® Coating is a solvent-based, modified thermoplastic liquid coating that dries to a durable, flexible rubber-like protective coating on parts and equipment.

What better way to rustproof, weatherproof, frayproof, rattleproof, and shatterproof almost anything in the plant?

PRODUCT FEATURES

- Coats metal, most plastics, glass, epoxy glass, concrete, fabric, foam, fiberglass, masonry, rubber, vinyl, and wood
- Available in yellow, blue, black, and red
- Won't crack or chip like paint
- Resists sun, salt spray, and extreme weather
- Resists acids, alkalis, salts, detergents and other chemicals
- Remains flexible in and resists temperatures from -30°F to 200°F (-34°C to 93°C)
- Toluene-free formula



Agency Approvals

NSF International

Loctite® H4000 Speedbonder Structural Adhesive, Non-Sag
 Loctite® 55 Pipe Sealing Cord
 Loctite® 222MS Threadlocker, Low Strength/Small Screw
 Loctite® 242 Threadlocker, Medium Strength
 Loctite® 243 Threadlocker, Medium Strength/Oil Resistant
 Loctite® 248 Threadlocker, Medium Strength/Removable
 Loctite® 262 Threadlocker, Medium to High Strength
 Loctite® 290 Threadlocker, Wicking Grade
 Loctite® 480 Prism Instant Adhesive, Black/Toughened
 Loctite® 518 Gasket Eliminator Flange Sealant
 Loctite® 561 PST Pipe Sealant
 Loctite® 564 Thread Sealant, General Purpose
 Loctite® 565 PST Thread Sealant, Controlled Strength
 Loctite® 587 Blue, High Performance RTV Silicone Gasket Maker
 Loctite® 680 Retaining Compound, Slip Fit/High Strength
 Loctite® 5900 Flange Sealant, Heavy Body RTV Silicone
 Loctite® 7649 Primer N
 Loctite® Food Grade Anti-Seize
 Loctite® Food Grade Grease
 Loctite® No More Leaks, Plastic Pipe Sealant
 Loctite® ODC-Free Cleaner & Degreaser
 Loctite® Superflex RTV, Silicone Adhesive Sealants (Black, Clear, White)
 Loctite® ViperLube Clear High Performance Synthetic Grease
 Loctite® ViperLube High Performance Synthetic Grease
 Loctite® ViperLube High Performance Synthetic Lubricant, Gear Oils
 Loctite® ViperLube High Perf. Synthetic Lubricant, Lightweight Oils

American Bureau of Shipping (ABS)

Loctite® 242 Threadlocker, Medium Strength
 Loctite® 262 Threadlocker, Medium to High Strength
 Loctite® 404 Quick Set Instant Adhesive, General Purpose
 Loctite® 454 Prism Instant Adhesive, Surface Insensitive Gel
 Loctite® 495 Super Bonder Instant Adhesive
 Loctite® 545 Thread Sealant, Hydraulic/Pneumatic Fittings
 Loctite® 567 PST Thread Sealant, High Temperature
 Loctite® 587 Blue, High Performance RTV Silicone Gasket Maker
 Loctite® 598 Black, High Performance RTV Silicone Gasket Maker
 Loctite® 620 Retaining Compound, Slip Fit/High Temperature
 Loctite® 680 Retaining Comp., Slip Fit/High Strength
 Loctite® Extend Rust Treatment
 Loctite® Fixmaster® Aluminum Liquid
 Loctite® Fixmaster® Aluminum Putty
 Loctite® Fixmaster® Poxy Pak, Fast Cure Epoxy
 Loctite® Fixmaster® Fast Set Steel Putty
 Loctite® Fixmaster® Flex 80 Putty
 Loctite® Fixmaster® Marine Chocking
 Loctite® Fixmaster® Stainless Steel Putty
 Loctite® Fixmaster® Steel Liquid
 Loctite® Fixmaster® Steel Putty
 Loctite® Fixmaster® Wear Resistant Putty
 Loctite® Fixmaster® Wet Surface Repair Putty
 Loctite® Marine Grade Anti-Seize
 Loctite® Nickel Anti-Seize
 Loctite® Nordbak® Brushable Ceramic-Grey
 Loctite® Nordbak® Pneu-Wear
 Loctite® Silver Grade Anti-Seize

Canadian Food Inspection Agency (CFIA)

Loctite® E-00CL Hysol® Epoxy Adhesive, Fast Setting
 Loctite® E-00NS Hysol® Epoxy Adhesive, Non-Sag
 Loctite® E-05CL Hysol® Epoxy Adhesive, Toughened
 Loctite® E-20HP Hysol® Epoxy Adhesive, Fast Setting
 Loctite® E-20NS Hysol® Epoxy Adhesive, Metal Bonder
 Loctite® E-30CL Hysol® Epoxy Adhesive, Glass Bonder
 Loctite® E-40FL Hysol® Epoxy Adhesive, Flexible
 Loctite® E-60HP Hysol® Epoxy Adhesive, Toughened
 Loctite® E-60NC Hysol® Epoxy Adhesive, Electrically Non-Corrosive
 Loctite® E-90FL Hysol® Epoxy Adhesive, Flexible
 Loctite® E-120HP Hysol® Epoxy Adhesive, Ultra Strength
 Loctite® U-05FL Hysol® Urethane Adhesive, High Strength
 Loctite® 220 Threadlocker, Wicking Grade/Low Strength
 Loctite® 222MS Threadlocker, Low Strength/Small Screw
 Loctite® 242 Threadlocker, Medium Strength
 Loctite® 243 Threadlocker, Medium Strength/Oil Resistant
 Loctite® 248 Threadlocker, Medium Strength/Removable
 Loctite® 262 Threadlocker, Medium to High Strength

Loctite® 266 Threadlocker, High Strength/High Temperature
 Loctite® 268 Threadlocker, High Strength
 Loctite® 271 Threadlocker, High Strength
 Loctite® 272 Threadlocker, High Strength/High Temperature
 Loctite® 290 Threadlocker, Wicking Grade
 Loctite® 330 Depend Adhesive, No Mix
 Loctite® 380 Black Max® Instant Adhesive, Toughened
 Loctite® 401 Prism Instant Adhesive, Surface Insensitive
 Loctite® 404 Quick Set Instant Adhesive, General Purpose
 Loctite® 410 Prism Instant Adhesive, Black/Toughened
 Loctite® 414 Super Bonder Instant Adhesive
 Loctite® 416 Super Bonder Instant Adhesive
 Loctite® 422 Super Bonder Instant Adhesive
 Loctite® 454 Prism Instant Adhesive, Surface Insensitive Gel
 Loctite® 518 Gasket Eliminator Flange Sealant
 Loctite® 545 Thread Sealant, Hydraulic/Pneumatic Fittings
 Loctite® 554 Thread Sealant, Refrigerant Sealant
 Loctite® 561 PST Pipe Sealant
 Loctite® 564 Thread Sealant, General Purpose
 Loctite® 565 PST Thread Sealant, Controlled Strength
 Loctite® 567 PST Thread Sealant, High Temperature
 Loctite® 569 Thread Sealant, Hydraulic Sealant
 Loctite® 587 Blue, High Performance RTV Silicone Gasket Maker
 Loctite® 592 PST Thread Sealant, Slow Cure
 Loctite® 598 Black, High Performance RTV Silicone Gasket Maker
 Loctite® 609 Retaining Compound, Press Fit/General Purpose
 Loctite® 620 Retaining Compound, Slip Fit/High Temperature
 Loctite® 638 Retaining Compound, Slip Fit/Maximum Strength
 Loctite® 641 Retaining Compound, Controlled Strength
 Loctite® 660 Quick Metal Retaining Compound, Press Fit Repair
 Loctite® 712 Tak Pak Accelerator
 Loctite® 770 Prism Primer
 Loctite® 2760 Threadlocker, Primerless/High Strength
 Loctite® 4210 Prism Instant Adhesive, Thermal Resistant
 Loctite® 4212 Prism Instant Adhesive, Thermal Resistant Gel
 Loctite® 5900 Flange Sealant, Heavy Body RTV Silicone
 Loctite® 7649 Primer N
 Loctite® Aviation Gasket Sealant
 Loctite® Belt Dressing & Conditioner
 Loctite® Big Foot Acrylic Pedestrian Grade
 Loctite® Big Foot Heavy Duty Pedestrian Grade
 Loctite® Big Foot Low Profile Pedestrian Grade
 Loctite® Big Foot Vehicular Grade
 Loctite® Big Foot Zero V.O.C.
 Loctite® Black Contact Adhesive
 Loctite® C5-A® Copper Based Anti-Seize
 Loctite® Cold Galvanizing Compound
 Loctite® Color Guard, Tough Rubber Coating
 Loctite® Contact Adhesive
 Loctite® Extend Rust Treatment
 Loctite® Fixmaster® Aluminum Liquid
 Loctite® Fixmaster® Aluminum Putty
 Loctite® Fixmaster® Deep Pour Grout
 Loctite® Fixmaster® Fast Cure Epoxy, Mixer Cups
 Loctite® Fixmaster® Fast Set Grout
 Loctite® Fixmaster® Fast Set Steel Epoxy
 Loctite® Fixmaster® Fast Set Steel Putty
 Loctite® Fixmaster® Floor Fill
 Loctite® Fixmaster® General Purpose Epoxy, Mixer Cups
 Loctite® Fixmaster® High Performance Epoxy
 Loctite® Fixmaster® High Performance Quartz
 Loctite® Fixmaster® Magna-Crete
 Loctite® Fixmaster® Marine Chocking
 Loctite® Fixmaster® Poxy Pak™, Fast Cure Epoxy
 Loctite® Fixmaster® Stainless Steel Putty
 Loctite® Fixmaster® Steel Liquid
 Loctite® Fixmaster® Steel Putty
 Loctite® Fixmaster® Superior Metal
 Loctite® Fixmaster® Underwater Repair Epoxy
 Loctite® Fixmaster® Wear Resistant Putty
 Loctite® Form-A-Thread Stripped Thread Repair Kit
 Loctite® Gasket Sealant 1
 Loctite® H.V.A.C. Blue Pipe Joint Compound
 Loctite® High Temperature Gasket Maker
 Loctite® Instant Gasket
 Loctite® No More Leaks, Plastic Pipe Sealant
 Loctite® O-Ring Making Kit
 Loctite® Pipe Repair Kit



LOCTITE®

Need It Now!

Name: _____

Department: _____



Check the box for items you need

| Product/ Part # | Loctite® Product Name | Package Size |
|--------------------|--------------------------|-----------------|
|--------------------|--------------------------|-----------------|

Threadlocking

| | | |
|--------------------------------|-----------------------------------|------------|
| <input type="checkbox"/> 222 | Loctite® 222 Threadlocker | 50 ml |
| <input type="checkbox"/> 243 | Loctite® 243 Threadlocker | 50 ml |
| <input type="checkbox"/> 271 | Loctite® 271 Threadlocker | 50 ml |
| <input type="checkbox"/> 290 | Loctite® 290 Threadlocker | 50 ml |
| <input type="checkbox"/> 2440 | Loctite® 2440 Threadlocker | 50 ml |
| <input type="checkbox"/> 37773 | Loctite® 248 Threadlocker – Stick | 19 g stick |
| <input type="checkbox"/> 37775 | Loctite® 268 Threadlocker – Stick | 19 g stick |

Thread Sealing

| | | |
|--------------------------------|---|------------|
| <input type="checkbox"/> 545 | Loctite® 545 Thread Sealant | 50 ml |
| <input type="checkbox"/> 567 | Loctite® 567 PST Thread Sealant with PTFE | 50 ml |
| <input type="checkbox"/> 577 | Loctite® 577 Thread Sealant | 50 ml |
| <input type="checkbox"/> 581 | Loctite® 581 Thread Sealant | 50 ml |
| <input type="checkbox"/> 31899 | Loctite® 55 Pipe Sealing Cord | 150 m |
| <input type="checkbox"/> 37776 | Loctite® 561 PST Pipe Sealant with PTFE – Stick | 19 g stick |

Gasketing

| | | |
|--------------------------------|---|------------|
| <input type="checkbox"/> 510 | Loctite® 510 Gasket Eliminator Flange Sealant | 50 ml |
| <input type="checkbox"/> 587 | Loctite® 587 Blue RTV Silicone | 370 g |
| <input type="checkbox"/> 596 | Loctite® 596 Superflex Industrial Grade Silicone | 300 ml |
| <input type="checkbox"/> 30507 | Loctite® Instant Gasket – Can | 7 oz. |
| <input type="checkbox"/> 40392 | Loctite® 534 Hi-Tack Gasket Dressing – Stick | 19 g stick |
| <input type="checkbox"/> 40393 | Loctite® 548 Gasket Eliminator Flange Sealant – Stick | 19 g stick |

Retaining

| | | |
|--------------------------------|---|------------|
| <input type="checkbox"/> 603 | Loctite® 603 Retaining Compound | 50 ml |
| <input type="checkbox"/> 609 | Loctite® 609 Retaining Compound | 50 ml |
| <input type="checkbox"/> 638 | Loctite® 638 Retaining Compound | 50 ml |
| <input type="checkbox"/> 641 | Loctite® 641 Retaining Compound | 50 ml |
| <input type="checkbox"/> 660 | Loctite® 660 Retaining Compound | 50 ml |
| <input type="checkbox"/> 680 | Loctite® 680 Retaining Compound | 50 ml |
| <input type="checkbox"/> 40391 | Loctite® 668 Retaining Compound – Stick | 19 g stick |

Metal Repair System

| | | |
|--------------------------------|--|-------------|
| <input type="checkbox"/> 39917 | Loctite® Fixmaster® Fast Set Steel Putty | 1 lb. kit |
| <input type="checkbox"/> 97453 | Loctite® Fixmaster® Aluminum Liquid | 1 lb. kit |
| <input type="checkbox"/> 97463 | Loctite® Fixmaster® Aluminum Putty | 1 lb. kit |
| <input type="checkbox"/> 97473 | Loctite® Fixmaster® Superior Metal Putty | 1 lb. kit |
| <input type="checkbox"/> 97483 | Loctite® Fixmaster® Steel Liquid | 1 lb. kit |
| <input type="checkbox"/> 98853 | Loctite® Fixmaster® Metal Magic Steel | 4 oz. stick |
| <input type="checkbox"/> 99913 | Loctite® Fixmaster® Steel Putty | 1 lb. kit |

Wear Prevention – Reclaim and Repair

| | | |
|--------------------------------|---|------------|
| <input type="checkbox"/> 39918 | Loctite® Nordbak® High Impact Wearing Compound | 25 lb. kit |
| <input type="checkbox"/> 96092 | Loctite® Nordbak® Chemical Resistant Coating | 12 lb. kit |
| <input type="checkbox"/> 96392 | Loctite® Nordbak® Ultra High Temperature Wearing Compound | 25 lb. kit |

| Product/ Part # | Loctite® Product Name | Package Size |
|--------------------|--------------------------|-----------------|
|--------------------|--------------------------|-----------------|

| | | |
|--------------------------------|--|-----------|
| <input type="checkbox"/> 96433 | Loctite® Nordbak® High Temperature Brushable Ceramic | 2 lb. kit |
| <input type="checkbox"/> 98383 | Loctite® Nordbak® Pneu-Wear | 3 lb. kit |
| <input type="checkbox"/> 98733 | Loctite® Nordbak® Brushable Ceramic – Grey | 2 lb. kit |
| <input type="checkbox"/> 98742 | Loctite® Fixmaster® Wear Resistant Putty – Grey | 1 lb. kit |
| <input type="checkbox"/> 99813 | Loctite® Nordbak® Wearing Compound | 5 lb. kit |

Grouting, Floor and Concrete Repair

| | | |
|--------------------------------|--|-------------|
| <input type="checkbox"/> 39366 | Loctite® Fixmaster® Concrete Repair Epoxy | 4 oz. stick |
| <input type="checkbox"/> 39916 | Loctite® Urethane Sealant | 10.2 oz. |
| <input type="checkbox"/> 95551 | Loctite® Fixmaster® Magna-Crete – Grey | 1 gal. kit |
| <input type="checkbox"/> 96495 | Loctite® Fixmaster® High Performance Quartz – Grey | 42 lb. kit |
| <input type="checkbox"/> 97572 | Loctite® Fixmaster® Marine Chocking – Green | 2 gal. kit |
| <input type="checkbox"/> 99361 | Loctite® Fixmaster® Floor Fill – Grey | 10 lb. kit |
| <input type="checkbox"/> 99545 | Loctite® Fixmaster® Deep Pour Grout – Black | 5 gal. kit |

Anti-Slip Traction System

| | | |
|---------------------------------|---|------------|
| <input type="checkbox"/> 39020J | Loctite® Big Foot Heavy Duty Pedestrian Grade – Yellow | 1 gal. kit |
| <input type="checkbox"/> 39021J | Loctite® Big Foot™ Heavy Duty Pedestrian Grade – Tile Red | 1 gal. kit |
| <input type="checkbox"/> 39022J | Loctite® Big Foot Zero V.O.C. – Yellow | 1 gal. kit |
| <input type="checkbox"/> 39023J | Loctite® Big Foot Zero V.O.C. – Tile Red | 1 gal. kit |
| <input type="checkbox"/> 39915 | Loctite® Big Foot Zero V.O.C. – Grey | 1 gal. kit |
| <input type="checkbox"/> 96211 | Loctite® Big Foot Heavy Duty Pedestrian Grade – Black | 1 gal. kit |
| <input type="checkbox"/> 96211G | Loctite® Big Foot Heavy Duty Pedestrian Grade – Green | 1 gal. kit |
| <input type="checkbox"/> 96231G | Loctite® Big Foot Zero V.O.C. – Green | 1 gal. kit |
| <input type="checkbox"/> 96261 | Loctite® Big Foot Heavy Duty Pedestrian Grade – Grey | 1 gal. kit |
| <input type="checkbox"/> 96265 | Loctite® Big Foot Heavy Duty Pedestrian Grade – Grey | 5 gal. kit |

Rubber and Belt Repair

| | | |
|--------------------------------|---|------------|
| <input type="checkbox"/> 37719 | Loctite® Fixmaster® Instant Belt Repair – Amber | 1 lb. kit |
| <input type="checkbox"/> 96677 | Loctite® Fixmaster® Rapid Rubber Repair | 400 ml kit |
| <input type="checkbox"/> 97423 | Loctite® Fixmaster® Flex 80 Putty | 1 lb. kit |

Anti-Seize Lubricants

| | | |
|--------------------------------|---|------------|
| <input type="checkbox"/> 34395 | Loctite® Marine Grade Anti-Seize | 8 oz. |
| <input type="checkbox"/> 37782 | Loctite® C-5A® Copper Anti-Seize – Stick | 20 g stick |
| <input type="checkbox"/> 37783 | Loctite® Silver Grade Anti-Seize – Stick | 20 g stick |
| <input type="checkbox"/> 39901 | Loctite® Zinc Anti-Seize – Can | 1 lb. |
| <input type="checkbox"/> 51168 | Loctite® Food Grade Anti-Seize – Brushtop | 8 oz. |
| <input type="checkbox"/> 51606 | Loctite® Heavy Duty Anti-Seize – Brushtop | 1.2 lb. |
| <input type="checkbox"/> 51007 | Loctite® C5-A® Copper Based Anti-Seize Lubricant – Brushtop | 1 lb. |
| <input type="checkbox"/> 76764 | Loctite® Silver Grade Anti-Seize – Brushtop | 1 lb. |
| <input type="checkbox"/> 77164 | Loctite® Nickel Anti-Seize – Brushtop | 1 lb. |

| Product/ Part # | Loctite® Product Name | Package Size |
|--------------------|--------------------------|-----------------|
|--------------------|--------------------------|-----------------|

Rust Treatments and Cleaning

| | | |
|--------------------------------|---|------------|
| <input type="checkbox"/> 22355 | Loctite® ODC-Free Cleaner & Degreaser – Aerosol | 15 oz. |
| <input type="checkbox"/> 25791 | Loctite® Electrical Contact & Parts Cleaner | 11 oz. |
| <input type="checkbox"/> 36253 | Loctite® Orange Lotion Hand Cleaner | 4 L |
| <input type="checkbox"/> 36646 | Loctite® Non-Flammable Electrical Contact & Parts Cleaner | 14 oz. |
| <input type="checkbox"/> 75448 | Loctite® Extend Rust Treatment – Bottle | 1 gal. |
| <input type="checkbox"/> 79040 | Loctite® Chisel Gasket Remover 790 | 18 oz. |
| <input type="checkbox"/> 82249 | Loctite® Natural Blue® Biodegradable Cleaner & Degreaser – Spray Bottle | 24 fl. oz. |
| <input type="checkbox"/> 82251 | Loctite® Natural Blue® Biodegradable Cleaner & Degreaser – Bottle | 1 gal. |

Bonding

| | | |
|----------------------------------|---|---------------------|
| <input type="checkbox"/> 330 | Loctite® 330 Depend® Adhesive | 25 ml syringe |
| <input type="checkbox"/> 380 | Loctite® 380 Black Max® Instant Adhesive | 1 oz. |
| <input type="checkbox"/> 401 | Loctite® Fast 401 Prism® Instant Adhesive | 20 g bottle |
| <input type="checkbox"/> 404 | Loctite® 404 Quick Set Instant Adhesive | 4 oz. |
| <input type="checkbox"/> 454 | Loctite® 454 Prism® Instant Adhesive | 20 g bottle |
| <input type="checkbox"/> 21426 | Loctite® Fast Cure Epoxy – Mixer Cups | 10 - 1 fl. oz. cups |
| <input type="checkbox"/> 81120 | Loctite® Poxypak™ – Fast Cure Epoxy | 1 oz syringe |
| <input type="checkbox"/> E-120HP | Loctite® Hysol® E-120HP Epoxy Adhesive | 50 ml |

Kits, Specialty and Emergency Repair Products

| | | |
|--------------------------------|---|-------------|
| <input type="checkbox"/> 00112 | Loctite® O-Ring Making Kit | |
| <input type="checkbox"/> 28654 | Loctite® Form-A-Thread Stripped Thread Repair Kit | |
| <input type="checkbox"/> 96321 | Loctite® Pipe Repair Kit | 5 x 182 cm |
| <input type="checkbox"/> 82093 | Loctite® Fixmaster® Underwater Repair Epoxy – Stick | 4 oz. stick |

Accessories

| | | |
|---------------------------------|---|---------|
| <input type="checkbox"/> 39633 | Loctite® Fixmaster® Rapid Rubber Repair Static Mixers | 6 / bag |
| <input type="checkbox"/> 39635 | Loctite® Fixmaster® Rapid Rubber Repair Dispenser | |
| <input type="checkbox"/> 96121 | Loctite® Phenolic Roller | |
| <input type="checkbox"/> 96131 | Loctite® Mixing Blade | |
| <input type="checkbox"/> 97001 | Loctite® Bottle Hand Pump | |
| <input type="checkbox"/> 983531 | Loctite® Manual Applicator, Dual Cartridge | |

Primers

| | | |
|--------------------------------|---|---------|
| <input type="checkbox"/> 21348 | Loctite® 7649 Primer N | 4.5 oz. |
| <input type="checkbox"/> 94142 | Loctite® Big Foot Water-Based Primer/Sealer | 1 gal. |
| <input type="checkbox"/> 95581 | Loctite® Big Foot Acrylic Primer | 1 gal. |
| <input type="checkbox"/> 96132 | Loctite® Big Foot Metal Primer | 1 gal. |



Name: _____

Department: _____

Reliability Improvement Suggestion

1. Problem Equipment _____ Department _____

Describe problem including failing components: _____

How often does this happen? _____ Times per month _____ Times per year

Describe negative impact: _____

Describe your intended actions including Loctite® brand products to be used: _____

Necessary products issued? Yes No Need Loctite® Engineer help? Yes No

2. Problem Equipment _____ Department _____

Describe problem including failing components: _____

How often does this happen? _____ Times per month _____ Times per year

Describe negative impact: _____

Describe your intended actions including Loctite® products to be used: _____

Necessary products issued? Yes No Need Loctite® Engineer help? Yes No

Additional Training Needed

Topics (Check appropriate boxes)

Comments

- Mechanical Basics & Failure Root Causes _____
- Rebuild/Resurface Shafts Wear Prevention _____
- Machine Base Grouting _____
- Belt Jointing & Repair _____
- Floor Repair & Resurface _____
- Anti-Slip Safety Flooring _____
- Corrosion Protection (tanks, decking, etc.) _____

Training Critique

Check appropriate boxes

Great

O.K.

Poor

- I learned useful information and proactive techniques for my job Great O.K. Poor
- The instructor was well informed and his style made it easy to learn Great O.K. Poor
- The examples helped me to understand where I can help increase reliability Great O.K. Poor
- The demos and visual aids were used effectively and helped me learn Great O.K. Poor
- The reference handouts are on target and will be helpful reminders Great O.K. Poor
- Length of class Too Long Just right Too Short
- Pace of class Too Fast Just Right Too Slow

Comments: _____

Henkel (Malaysia) Sdn. Bhd.
46th Floor, Menara Telekom
Jalan Pantai Baharu
59200 Kuala Lumpur, Malaysia
Tel: +603-2246 1000
Fax: +603-2246 1188

Henkel Singapore Pte Ltd.
401 Commonwealth Drive
#03-01/02
Haw Par Technocentre
Singapore 149598
Tel : +65-6266 0100
Fax : +65-6266 1161

PT Henkel Indonesien
TALAVERA Office Park, Level 21
Jl. T. B. Simatupang Kav. 22-26
Jakarta 12430, Indonesia
Tel : +62-21-2758 6900
Fax : +62-21-7592 4625





Agency Approvals cont.

Canadian Food Inspection Agency (CFIA)

Loctite® Silver Grade Anti-Seize
Loctite® Silver Grade Anti-Seize
Loctite® Solvo-Rust Super Penetrating Oil
Loctite® Superflex RTV, Silicone Adhesive Sealants (Black, Clear, White)
Loctite® Superflex Red High Temp RTV, Silicone Adhesive Sealant
Loctite® Thread Sealant with PTFE
Loctite® Urethane Sealant
Loctite® ViperLube High Performance Synthetic Grease
Loctite® ViperLube High Performance Synthetic Grease-Aerosol
Loctite® ViperLube High Performance Synthetic Lubricant, Gear Oils
Loctite® ViperLube High Perf. Synthetic Lubricant, Lightweight Oils

Military Specifications (Mil Spec)

Loctite® 220 Threadlocker, Wicking Grade/Low Strength
Loctite® 222MS Threadlocker, Low Strength/Small Screw
Loctite® 242 Threadlocker, Medium Strength
Loctite® 262 Threadlocker, Medium to High Strength
Loctite® 271 Threadlocker, High Strength
Loctite® 277 Threadlocker, High Strength/Large Threads
Loctite® 290 Threadlocker, Wicking Grade
Loctite® 571 Thread Sealant, Pipe Sealant HVV
Loctite® 609 Retaining Compound, Press Fit/General Purpose
Loctite® 635 Retaining Compound, Slip Fit/High Strength/Slow Cure
Loctite® 640 Retaining Compound, Press Fit/Medium Strength/High Temp.
Loctite® 675 Retaining Compound, Press Fit/Medium Strength
Loctite® 712 Tak Pak Accelerator
Loctite® 7452 Tak Pak Accelerator
Loctite® 7471 Primer T
Loctite® 7649 Primer N
Loctite® C5-A® Copper Based Anti-Seize Lubricant
Loctite® C5-A® Copper Based Anti-Seize
Loctite® Moly-50 Anti-Seize
Loctite® Silver Grade Anti-Seize
Loctite® Silver Grade Anti-Seize
Loctite® Thread Sealing Tape with PTFE

Military Specifications (Commercial Item Standard)

Loctite® 404 Quick Set Instant Adhesive, General Purpose
Loctite® 406 Prism Instant Adhesive, Surface Insensitive
Loctite® 414 Super Bonder Instant Adhesive
Loctite® 415 Super Bonder Instant Adhesive
Loctite® 416 Super Bonder Instant Adhesive
Loctite® 420 Super Bonder Instant Adhesive
Loctite® 422 Super Bonder Instant Adhesive
Loctite® 430 Super Bonder Instant Adhesive
Loctite® 444 Tak Pak Instant Adhesive
Loctite® 493 Super Bonder Instant Adhesive
Loctite® 495 Super Bonder Instant Adhesive
Loctite® 496 Super Bonder Instant Adhesive

FDA CFR175.105

Loctite® 1X Hysol® Hot Melt Adhesive, EVA Based
Loctite® 3X Hysol® Polyshot™ Hot Melt Adhesive, EVA Based
Loctite® 232 Hysol® Hot Melt Adhesive, EVA Based
Loctite® 236 Hysol® Hot Melt Adhesive, EVA Based
Loctite® 342 Hysol® Hot Melt Adhesive, EVA Based
Loctite® 740 Hysol® Hot Melt Adhesive, EVA Based
Loctite® 0740LV Hysol® Hot Melt Adhesive, EVA Based
Loctite® 1942 Hysol® Hot Melt Adhesive, EVA Based
Loctite® 6002 Hysol® Hot Melt Adhesive
Loctite® CoolMelt Hysol® Hot Melt Adhesive, EVA Based
Loctite® QuikPac Hysol® Hot Melt Adhesive, EVA Based
Loctite® SuperPac Hysol® Hot Melt Adhesive, EVA Based
Loctite® WaxPac Hysol® Hot Melt Adhesive, EVA Based

UL Classified/Listed for U.S.

Loctite® 55 Pipe Sealing Cord
Loctite® 271 Threadlocker, High Strength
Loctite® 510 Gasket Eliminator® Flange Sealant
Loctite® 515 Gasket Eliminator® Flange Sealant
Loctite® 561 PST Pipe Sealant
Loctite® 565 PST Thread Sealant, Controlled Strength
Loctite® 567 PST Thread Sealant, High Temperature
Loctite® 587 Blue, High Performance RTV Silicone Gasket Maker
Loctite® 592 PST Thread Sealant, Slow Cure

Loctite® 5083 Nuva-Sil Silicone Potting Compound
Loctite® 5091™ Nuva-Sil Silicone Potting Compound, High Adhesion
Loctite® 5950™ Fastgasket Flange Sealant, Cure-in-Place
Loctite® 7804FRM-HV Hysol® Hot Melt Adhesive
Loctite® 7809FR Hysol® Hot Melt Adhesive, Polyamide
Loctite® Superflex Non-Corrosive RTV, Clear Silicone Adhesive Sealant
Loctite® Superflex RTV, Silicone Adhesive Sealants (Black, Clear, White)

ULC Classified for Canada

Loctite® 561 PST Pipe Sealant
Loctite® 564 Thread Sealant, General Purpose
Loctite® 565 PST Thread Sealant, Controlled Strength
Loctite® 567 PST Thread Sealant, High Temperature
Loctite® 592 PST Thread Sealant, Slow Cure
Loctite® Superflex RTV, Silicone Adhesive Sealants (Black, Clear, White)

CSA International

Loctite® 55 Pipe Sealing Cord
Loctite® 561 PST Pipe Sealant
Loctite® 564 Thread Sealant, General Purpose
Loctite® 565 PST Thread Sealant, Controlled Strength
Loctite® 567 PST Thread Sealant, High Temperature

ISO-10993 Compliance

Loctite® M-11FL Hysol® Medical Device Urethane Adhesive
Loctite® M-21HP Hysol® Medical Device Epoxy Adhesive
Loctite® M-31CL Hysol® Medical Device Epoxy Adhesive
Loctite® M-121HP Hysol® Medical Device Epoxy Adhesive
Loctite® 713 Prism® Medical Device Accelerator
Loctite® 3201 Light Cure Adhesive, Polycarbonate/Thermoplastics
Loctite® 3211 Light Cure Adhesive, Polycarbonate/Thermoplastics
Loctite® 3301 Light Cure Adhesive, Plastic/Metal
Loctite® 3311 Light Cure Adhesive, Plastic/Metal
Loctite® 3321 Light Cure Adhesive, Plastic/Metal
Loctite® 3341 Light Cure Adhesive, Plasticized Substrates
Loctite® 3345 Light Cure Adhesive, Glass/Metal
Loctite® 3381 Light Cure Adhesive, Flexible/Plastics
Loctite® 3911 Light Cure Adhesive
Loctite® 3912 Light Cure Adhesive
Loctite® 3913 Light Cure Adhesive
Loctite® 3921 Light Cure Adhesive, Plastic/Metal
Loctite® 3922 Light Cure Adhesive, Plastic/Metal
Loctite® 3924 Light Cure Adhesive, Plastic/Metal
Loctite® 3926 Light Cure Adhesive, Plastic/Metal
Loctite® 3933 Light Cure Adhesive
Loctite® 3936 Light Cure Adhesive
Loctite® 3941 Light Cure Adhesive, High Performance/Various Substrates
Loctite® 3942 Light Cure Adhesive, High Performance/Various Substrates
Loctite® 3943 Light Cure Adhesive, High Performance/Various Substrates
Loctite® 3944 Light Cure Adhesive
Loctite® 3971 Light Cure Adhesive, Plasticized Substrates
Loctite® 3972 Light Cure Adhesive, Plasticized Substrates
Loctite® 3981 Hysol® Epoxy Adhesive, High Performance/Various Substrates
Loctite® 3982 Hysol® Epoxy Adhesive, High Performance/Various Substrates
Loctite® 3984 Hysol® Epoxy Adhesive, High Performance/Various Substrates
Loctite® 4011 Prism Medical Device Adhesive
Loctite® 4013 Prism Medical Device Adhesive
Loctite® 4014 Prism Medical Device Adhesive
Loctite® 4031 Prism Medical Device Adhesive
Loctite® 4061 Prism Medical Device Adhesive
Loctite® 4081 Prism Medical Device Adhesive
Loctite® 4161 Super Bonder Medical Device Instant Adhesive
Loctite® 4206 Prism Medical Device Adhesive
Loctite® 4304 Flashcure Light Cure Adhesive
Loctite® 4305 Flashcure Light Cure Adhesive
Loctite® 4306 Flashcure Light Cure Adhesive, Instant
Loctite® 4307 Flashcure Light Cure Adhesive, Instant
Loctite® 4541 Prism Medical Device Adhesive
Loctite® 4601 Prism Medical Device Adhesive
Loctite® 4851 Prism Instant Adhesive, Flexible
Loctite® 4861 Prism Instant Adhesive, Flexible
Loctite® 4981 Super Bonder Medical Device Adhesive
Loctite® 5248 Nuva-Sil Medical Device Sealant
Loctite® 7701 Prism Medical Device Adhesive Primer



Fluid Compatibility Chart

for metal threaded fittings sealed with Loctite® Sealants

LIQUIDS, SOLUTIONS & SUSPENSIONS

LEGEND:

- All Loctite® Anaerobic Sealants are Compatible Including # 242, 243, 542, 545, 565, 567, 569, 571, 572, 577, 580, 592
- † Use Loctite® # 270, 271, 277, 554
- ✖ Not Recommended
- < 10% (same as ●)
- > 10% (same as †)
- ☆ < 5% (same as ●)
- > 5% (same as †)
- ◆ Use Loctite® # 242, 243, 290, 565

| | | | | | |
|-----------------------------|--------------------------------|-------------------------------------|-------------------------------|--------------------------------|-------------------------------|
| Abrasive Coolant ● | Armeen \$ ● | Ceric Oxide ● | Ethyl Acetate ● | Heptane ● | Methyl Alcohol ● |
| Acetaldehyde ● | Arochlor \$ ● | Chalk ● | Ethyl Alcohol ● | Hexachlorobenzene ● | Methyl Acetate ● |
| Acetate Solvents ● | Aromatic Gasoline ● | Chemical Pulp ● | Ethyl Amine ● | Hexadiene ● | Methyl Bromide ● |
| Acetone ● | Aromatic Solvents ● | Chestnut Tanning ● | Ethyl Bromide ● | Hexamethylene Tetramine ● | Methyl Carbitol ● |
| Acetyl Chloride ● | Arsenic Acid ● | China Clay ● | Ethyl Cellosolve \$ ● | Hexane ● | Methyl Cellosolve \$ ● |
| Acetylene (Liquid Phase) ● | Asbestos Slurry ● | Chloral Alcoholate ● | Ethyl Cellosolve Slurry \$ ● | Hydrazine ● | Methyl Chloride ● |
| Acid Clay ● | Ash Slurry ● | Chloramine ● | Ethyl Formate ● | Hydrazine Hydrate ● | Methyl Ethyl Ketone ● |
| Acrylic Acid ● | Asphalt Emulsions ● | Chlorinated Hydrocarbons ● | Ethyl Silicate ● | Hydrobromic Acid □ | Methyl Isobutyl Ketone ● |
| Acrylonitrile ● | Asphalt Molten ● | Chlorinated Paperstock ● | Ethylene Diamine ● | Hydrochloric Acid ● | Methyl Lactate ● |
| Activated Alumina ● | Bagasse Fibers ● | Chlorinated Solvents ● | Ethylene Dibromide ● | Hydrocyanic Acid □ | Methyl Orange ● |
| Activated Carbon ● | Barium Acetate ● | Chlorinated Sulphuric Acids ● | Ethylene Dichloride ● | Hydrofluoric Acid ● | Methylamine ● |
| Activated Silica ● | Barium Carbonate ● | Chlorinated Wax ● | Ethylene Glycol ● | Hydrogen Peroxide (dil) ● | Methylene Chloride ● |
| Alcohol-Allyl ● | Barium Chloride ● | Chlorine Dioxide ● | Ethylendiamine Tetramine ● | Hydrogen Peroxide (con) ● | Mineral Spirits ● |
| Alcohol-Amyl ● | Barium Hydroxide □ | Chlorine Liquid ● | Fatty Acids ● | Hydroponic Sol ● | Mixed Acid, Nitric/Sulfuric ● |
| Alcohol-Benzyl ● | Barium Sulfate ● | Chlorine (Dry) ● | Fatty Acids Amine ● | Hydroquinone ● | Monochloroacetic Acid ● |
| Alcohol-Butyl ● | Battery Acid □ | Chloroacetic Acid □ | Fatty Alcohol ● | Hydroxyacetic Acid ● | Morpholine ● |
| Alcohol-Ethyl ● | Battery Diffuser Juice ● | Chloroform (Dry) ● | Fatty Flocc ● | Hypo ● | Mud ● |
| Alcohol-Furfuryl ● | Bauxite (See Alumina) ● | Chlorobenzene (Dry) ● | Ferric Chloride ● | Hypochlorous Acid ● | |
| Alcohol-Hexyl ● | Bentonite ● | Chloroformate Methyl ● | Ferric Nitrate ● | Ink ● | NaCl Sol. ● |
| Alcohol-Isopropyl ● | Benzaldehyde ● | Chlorosulfonic Acid ● | Ferric Sulfate ● | Ink in Solvent-Printing ● | Naphtha ● |
| Alcohol-Methyl ● | Benzene ● | Chromic Acid Cleaning □ | Ferrous Oxalate ● | Iodine in Alcohol ● | Naphthalene ● |
| Alcohol-Propyl ● | Benzene Hexachloride ● | Chrome Liquor □ | Ferrous Sulfate 10% ● | Iodine-Potassium Iodide ● | Naphthalenes Solvent ● |
| Alum-Ammonium ● | Benzene in Hydrochloric Acid ● | Chrome Plating Bath □ | Ferrous Sulfate (Sat.) ● | Iodine Solutions ● | Naval Stores Solvent ● |
| Alum-Chrome ● | Benzoic Acid ● | Chromic Acid 10% ● | Ferrous Sulfate (Sat.) ● | Ion Exchange Service ● | Nematoxide ● |
| Alum-Potassium ● | Benzotriazole ● | Chromic Acid 50% (cold) ● | Fertilizer Sol ● | Ion Exclusion Glycol ● | Neoprene Emulsion ● |
| Alum-Sodium ● | Beryllium Sulfate ● | Chromic Acid 50% (hot) ● | Flotation Concentrates ● | Iron Moss Slurry ● | Neoprene Latex ● |
| Alumina ● | Bicarbonate Liquor ● | Chromium Chloride ● | Fluoride Salts ● | Iron Ore Taconite ● | Nickel Acetate ● |
| Aluminum Acetate ● | Bilge Lines ● | Chromium Sulfate ● | Fluorine, Gaseous or Liquid ● | Iron Oxide ● | Nickel Ammonium Sulfate ● |
| Aluminum Bicarbonate ● | Bleach Liquor ● | Classifier ● | Fluorolube ● | Isobutyl Alcohol ● | Nickel Chloride ● |
| Aluminum Bifluoride ● | Bleached Pulps ● | Clay ● | Fluoroacid ● | Isobutylaldehyde ● | Nickel Cyanide ● |
| Aluminum Chloride ● | Borax \$ Liquors ● | Coal Slurry ● | Fuming Nitric Red ● | Isocane ● | Nickel Fluoborate ● |
| Aluminum Sulfate ● | Boric Acid ● | Coal Tar ● | Fuming Sulfuric ● | Isopropyl Alcohol ● | Nickel Ore Fines ● |
| Ammonia Anhydrous ● | Brake Fluids ● | Cobalt Chloride ● | Fuming Sulfuric ● | Isopropyl Acetate ● | Nickel Plating Bright ● |
| Ammonia Solutions ● | Brine Chlorinated ● | Copper Ammonium Formate ● | Furfural ● | Isocyanate Resin ● | Nickel Sulfate ● |
| Ammonium Bisulfite ● | Brine (cold) ● | Copper Chloride ● | Gallium Sulfate ● | Isopropyl Ether ● | Nicotinic Acid □ |
| Ammonium Borate ● | Bromine Solution ● | Copper Cyanide ● | Gasoline-Acid Wash ● | Itaconic Acid ● | Nitrate Sol. ● |
| Ammonium Bromide ● | Butadiene ● | Copper Naphthenate ● | Gasoline-Alk. Wash ● | Jet Fuels ● | Nitration Acid(s) ● |
| Ammonium Carbonate ● | Butyl Acetate ● | Copper Plating (Acid Process) ● | Gasoline Aviation ● | Jeweler's Rouge ● | Nitric Acid ● |
| Ammonium Chloride ● | Butyl Alcohol ● | Copper Plating (Alk. Process) ● | Gasoline Copper Chloride ● | Jig Table Slurry ● | Nitric Acid 10% □ |
| Ammonium Chromate ● | Butyl Amine ● | Core Oil ● | Gasoline Ethyl ● | Kaolin-China Clay \$ ● | Nitric Acid 20% □ |
| Ammonium Chloride ● | Butyl Cellulosolve \$ ● | Corundum ● | Gasoline Motor ● | Kelp Slurry ● | Nitric Acid Anhydrous ● |
| Ammonium Chromate ● | Butyl Chloride ● | Cresosote ● | Gasoline Sour ● | Kerosene ● | Nitric Acid Fuming ● |
| Ammonium Fluoride ● | Butyl Ether (Dry) ● | Cresosote-Cresylic Acid ● | Glucocenic Acid ● | Kerosene Chlorinated ● | Nitro Aryl Sulfonic Acid ● |
| Ammonium Fluorosilicate ● | Butyl Lactate ● | Cyanide Solution ● | Glue-Animal Gelatin ● | Ketone ● | Nitrobenzene-Dry ● |
| Ammonium Formate ● | Butyraldehyde ● | Cyanoic Chloride ● | Glue-Plywood ● | Lacquer Thinner ● | Nitrocellulose ● |
| Ammonium Hydroxide ● | Butyric Acid ● | Cyclohexane ● | Glutamic Acid ● | Lactic Acid ● | Nitrofurane ● |
| Ammonium Hyposulfite ● | Cadmium Chloride ● | Cylinder Oils ● | Glycerol ● | Lapping Compound ● | Nitroguanidine ● |
| Ammonium Iodide ● | Cadmium Plating Bath ● | De-Ionized Water ● | Glycine ● | Latex-Natural ● | Nitroparaffins-Dry ● |
| Ammonium Molybdate ● | Cadmium Sulfate ● | De-Ionized Water Low Conductivity ● | Glycine Hydrochloride ● | Latex-Synthetic ● | Nitrosyl Chloride ● |
| Ammonium Nitrate ● | Calcium Acetate ● | Detergents ● | Glycol Amine ● | Latex-Synthetic Raw ● | Norite Carbon ● |
| Ammonium Oxalate ● | Calcium Bisulfate ● | Developer, photographic ● | Glycolic Acid ● | Laundry Wash Water ● | Nuclear ● |
| Ammonium Persulfate ● | Calcium Carbonate ● | Dextrin ● | Glyoxal ● | Laundry Bleach ● | |
| Ammonium Phosphate ● | Calcium Chlorate ● | Diacetone Alcohol ● | Gold Chloride ● | Laundry Blue ● | Oakite \$ Compound ● |
| Ammonium Picrate ● | Calcium Chloride Brine ● | Diammonium Phosphate ● | Gold Cyanide ● | Laundry Soda ● | Oil, Creosote ● |
| Ammonium Sulfate ● | Calcium Citrate ● | Diamylamine ● | Granodine ● | Lead Arsenate ● | Oil, Emulsified ● |
| Ammonium Sulfate Scrubber ● | Calcium Ferrocyanide ● | Diatomaceous Earth Slurry ● | Grape Pomace Graphite ● | Lead Oxide ● | Oil, Fuel ● |
| Ammonium Sulfide ● | Calcium Formate ● | Diazo Acetate ● | Grease Lubricating ● | Lead Sulfate ● | Oil, Lubricating ● |
| Ammonium Thiocyanate ● | Calcium Hydroxide ● | Dibutyl Phthalate ● | Green Soap ● | Lignin Extract ● | Oil, Soluble ● |
| Amyl Acetate ● | Calcium Lactate ● | Dichlorophenol ● | Grinding Lubricant ● | Lime Slaked ● | Oleic Acid (hot) ● |
| Amyl Amine ● | Calcium Nitrate ● | Dichloro Ethyl Ether ● | Grit Steel ● | Lime Sulfur Mix ● | Oleic Acid (cold) ● |
| Amyl Chloride ● | Calcium Phosphate ● | Dielectric Fluid ● | Gritty Water ● | Liquid Ion Exchange ● | Ozone (wet) ● |
| Aniline ● | Calcium Silicate ● | Diester Lubricants ● | Groundwood Stock ● | Lithium Chloride ● | |
| Aniline Dyes ● | Calcium Sulfamate ● | Diethyl Ether Dry ● | GRS Latex ● | LOX (Liquid O ₂) ● | Paint-Insene Base ● |
| Anodizing Bath ● | Calcium Sulfate ● | Diethylamine ● | Gum Latex ● | Ludox ● | Paint-Water Base ● |
| Antichlor Solution ● | Calcium Sulfite ● | Diethylene Glycol ● | Gum Turpentine ● | Lye ● | Paint-Remover-Sol. Type ● |
| Antimony Acid Salts ● | Camphor ● | Diglycolic Acid ● | Gypsum ● | Machine Coating Color ● | Paint-Vehicles ● |
| Antimony Oxide ● | Carbitol ● | Dimethyl Formamide ● | Halane Sol ● | Magnesium Chloride ● | Palmitic Acid ● |
| Antioxidant Gasoline ● | Carboic Acid (phenol) □ | Dimethyl Sulfoxide ● | Halogen Tin Plating ● | Magnesium Sulfate ● | Paper Board Mill Waste ● |
| Aqua Regia ● | Carbon Bisulfide ● | Dioxane Dry ● | Halowax \$ ● | Magnesium Carbonate ● | Paper Coating Slurry ● |
| Argon ● | Carbon Black ● | Dipentene-Pinene ● | Harvel-Trans Oil ● | Magnesium Chloride ● | Paper Pulp ● |
| | Carbowax \$ ● | Diphenyl ● | | Magnesium Hydroxide ● | Paper Pulp with Amun. ● |
| | Carboxymethyl Cellulose ● | Distilled Water (Industrial) ● | | Magnesium Sulfate ● | Paper Pulp with Dye ● |
| | Carnauba Wax ● | Dowtherm \$ ● | | Maleic Acid ● | Paper Pulp, bleached ● |
| | Casein ● | Drying Oil ● | | Maleic Anhydride ● | Paper Pulp, bleached-washed ● |
| | Casein Water Paint ● | Dust-Flue (Dry) ● | | Manganese Chloride ● | Paper Pulp Chlorinated ● |
| | Celite ● | Dye Liquors ● | | Manganese Sulfate ● | Paper Groundwood ● |
| | Cellosolve \$ ● | | | Melamine Resin ● | Paper Rag ● |
| | Cellulose Pulp ● | | | Mercuric Chloride ● | Paper Stocks, Fine ● |
| | Cellulose Xanthate ● | | | Mercuric Nitrate ● | Paradichlorobenzene ● |
| | Cement Dry/Air Blown ● | | | Mercury ● | Paraffin Molten ● |
| | Cement Grout ● | | | Mercury Dry ● | Paraffin Oil ● |
| | Cement Slurry ● | | | Methane ● | Paraformaldehyde ● |
| | Ceramic Enamel ● | | | | Pectin Solution Acid ● |
| | | | | | Pentachlorethane ● |
| | | | | | Pentaerythritol Sol. ● |
| | | | | | Perchloroethylene (Dry) ● |

LIQUIDS, SOLUTIONS & SUSPENSION

| | | | | | | | | | |
|----------------------------|---|----------------------------|---|---------------------------|---|----------------------------|---|--------------------------------|---|
| Perchloric Acid | □ | Potassium Permanganate | ● | Sodium Benzene Sulfonate | ● | Sulfthiazole | ● | Udylite Bath-Nickel | ● |
| Perchloromethyl Mercaptan | ● | Potassium Persulfate | ● | Sodium Bichromate | ● | Sulfite Liquor | ● | Undecylenic Acid | ● |
| Permanganic Acid | ✕ | Potassium Phosphate | ● | Sodium Bisulfite | ● | Sulfite Stock | ● | Unichrome Sol. Alk. | ● |
| Persulfuric Acid | ✕ | Potassium Silicate | ● | Sodium Bromide | ● | Sulfonated Oils | ● | Uranium Salts | ● |
| Petroleum Ether | ● | Potassium Sulfate | ● | Sodium Carbonate | ● | Sulfones | ● | Uranyl Nitrate | ● |
| Petroleum Jelly | ● | Potassium Xanthate | ● | Sodium Chlorate | ● | Sulfonic Acids | ● | Uranyl Sulfate | ● |
| Phenol Formaldehyde Resins | ● | Press Board Waste | ● | Sodium Chlorite | ● | Sulfonyl Chloride | ● | Urea Ammonia Liqueur | ● |
| Phenol Sulfonic Acid | ● | Propionic Acid | ● | Sodium Cyanide | ● | Sulfur Slurry | ● | Butane | ● |
| Phenolic Glue | ● | Propyl Alcohol | ● | Sodium Ferricyanide | ● | Sulfur Solution | ● | Butadiene Gas/Liquid | ● |
| Phloroglucinol | ● | Propyl Bromide | ● | Sodium Formate | ● | in Carbon Disulfide | ● | Butylene Gas/Liquid | ● |
| Phosphate Ester | ● | Propylene Glycol | ● | Sodium Glutamate | ● | Sulphuric Acid 0-7% | † | By-Product Gas (Dry) | ● |
| Phosphatic Sand | ● | Purmic | ● | Sodium Hydrogen Sulfate | ● | Sulphuric Acid 7-40% | † | Carbon Dioxide | ● |
| Phosphoric Acid 85% (hot) | ✕ | Pyranol | ● | Sodium Hydrosulfite | ● | Sulphuric Acid 40-75% | † | Carbon Disulfide | ● |
| Phosphoric Acid 85% (cold) | † | Pyridine | ● | Sodium Hydrosulfide | ● | Sulphuric Acid 75-95% | ✕ | Carbon Monoxide | ● |
| Phosphoric Acid 50% (hot) | † | Pyrogallol Acid | ● | Sodium Hydrochloride | ● | Sulphuric Acid 95-100% | ✕ | Chloride (Dry) | ● |
| Phosphoric Acid 50% (cold) | † | Pyrogen Free Water | ● | Sodium Hydroxide | ✕ | Sulphurous Acid | † | Chlorine (Wet) | ✕ |
| Phosphoric Acid 10% (cold) | ● | Pyrole | ● | Sodium Hydro. 20% (cold) | ● | Sulfonyl Chloride | ● | Chlorine (Wet) | ✕ |
| Phosphoric Acid 10% (hot) | † | Pyromellitic Acid | ● | Sodium Hydro. 20% (hot) | † | Surfactants | ● | Coke-Oven Gas (Cold) | ● |
| Phosphorous Molten | ● | Quebracho Tannin | ● | Sodium Hydro. 50% (cold) | † | Synthetic Latex | ● | Coke-Oven Gas (Hot) | † |
| Phosphotungstic Acid | ● | Rag Stock Bleached | ● | Sodium Hydro. 50% (hot) | ✕ | Taconite-Fines | ● | Cyanogen Chloride | ● |
| Photographic Sol. | ● | Rare Earth Salts | ● | Sodium Hydro. 70% (cold) | † | Talc-Slurry | ● | Cyanogen Gas | ● |
| Phthalic Acid | ● | Rayon Acid Water | ● | Sodium Hydro. 70% (hot) | ✕ | Tankage-Slurry | ● | Ethane | ● |
| Phytate | ● | Rayon Spin Bath | ● | Sodium Hypochlorite | ● | Tannic Acid (cold) | † | Ether-see Diethyl Ether | ● |
| Phytate Salts | ● | Rayon Spin Bath spent | ● | Sodium Lignosulfonate | ● | Tarin | ● | Ethylene | ● |
| Pickling Acid, Sulfuric | ● | Resorcinol | ● | Sodium Metasilicate | ● | Tar & Tar Oil | ● | Ethylene Oxide | ● |
| Picric Acid Solutions | ● | River Water | ● | Sodium Molten | ● | Tartaric Acid | ● | Water-Acid - Below pH7 | ● |
| Pine Oil Finish | ● | Road Oil | ● | Sodium Nitrate | ● | Television Chemicals | ● | Water pH7 to 8 | ● |
| Plating Sol. as follows: | | River Water | ● | Sodium Nitrite-Nitrate | ● | Tergitol § | ● | Water Alkaline - Over pH8 | ● |
| Brass Cyanide | ● | Roccal | ● | Sodium Perborate | ● | Terpineol | ● | Water Mine Water | ● |
| Bronze-Cyanide | ● | Rosin-Wood | ● | Sodium Peroxide | ✕ | Tetraethyl Lead | ● | Water Potable | ◇ |
| Chromium & Cadmium | ● | Rosin in Alcohol | ● | Sodium Persulfate | ● | Tetrahydrofuran | ● | Water River | ◇ |
| Cyanide | ● | Rosin Size | ● | Sodium Phosphate-Mono | ● | Tetranitromethane | ● | Water Sandy | ● |
| Cobalt Acid | ● | Rubber Latex | ● | Sodium Phosphate-Tri | ● | Textile Dyeing | ● | Water "White" - low pH | ● |
| Copper Acid | ● | Safrole | ● | Sodium Potassium Chloride | ● | Textile Finishing Oil | ● | Water "White" - high pH | ● |
| Copper Alk. | ● | Salt Alkaline | ● | Sodium Salicylate | ● | Textile Printing Oil | ● | Wax | ● |
| Gold Cyanide | ● | Salt Electrolytic | ● | Sodium Sesquicarbonate | ● | Thiocyanic Acid | ● | Wax Chlorinated | ● |
| Iron-Acid | ● | Salt Refrg. | ● | Sodium Silicate | ● | Thiogycollic Acid | ● | Wax Emulsions | ● |
| Lead-Fluoro | ● | Sand-Air Blown Slurry | ● | Sodium Silcofluoride | ● | Thionyl Chloride | ● | Weed Killer Dibromide | ● |
| Nickel Bright | ● | Sand-Air Phosphatic | ● | Sodium Stannate | ● | Thiophosphoryl Chloride | ● | Weisberg Sulfate Plating | ● |
| Platinum | ● | Sea Coal | ● | Sodium Sulfate | ● | Thiourea | ● | Wood ground pulp | ● |
| Silver-Cyanide | ● | Sea Water | ● | Sodium Sulfide | ● | Thorium Nitrate | ● | Wort Lines | ● |
| Tin-Acid | ● | Selenium Chloride | ● | Sodium Sulphhydrate | ● | Thymol | ● | X-Ray Developing Bath | ● |
| Tin Alk. Barrel | ● | Sequestrene | ● | Sodium Thiocyanate | ● | Tin Tetrachloride | ● | Xylene | ● |
| Zinc Acid | ● | Sewage | ● | Sodium Thiosulfate | ● | Tinnoxide | ● | Zelan | ● |
| Zinc Alk. Cyanide | ● | Shellac | ● | Sodium Tungstate | ● | Titanium Oxide Slurry | ● | Zeolite Water | ● |
| Polyacrylonitrile Slurry | ● | Shower Water | ● | Sodium Xanthate | ● | Titanium Oxide Sol. DuPont | ● | Zinc Acetate | ● |
| Polyentek | ● | Silica Gel | ● | Solox-Denat. Ethanol | ● | Titanium Sulfate | ● | Zinc Bromide | ● |
| Polyulfide Liquor | ● | Silica Ground | ● | Soluble Oil | ● | Titanium Tetrachloride | ● | Zinc Chloride | ● |
| Polyvinyl Acetate Slurry | ● | Silicone Tetrachloride | ● | Sorbic Acid | ● | Toluol | ● | Zinc Cyanide-Alk. | ● |
| Polyvinyl Chloride | ● | Silicone Fluids | ● | Sour Gasoline | ● | Toluene | ● | Zinc Fines Slurry | ● |
| Porcelain Frit | ● | Silver Cyanide | ● | Soybean Sludge-Acid | ● | p-Toluene Sulfonic Acid | † | Zinc Flux Paste | ● |
| Potash | □ | Silver Iodide-Aqu. | ● | Spensol Solution | ● | Transil Oil | ● | Zinc Galvanizing | ● |
| Potassium Acetate | ● | Silver Nitrate | ● | Stannic Chloride | ● | Trichloracetic Acid | ● | Zinc Hydroxide | ● |
| Potassium Alum. Sulfate | ● | Size Emulsion | ● | Starch | ● | Trichloroethane 1,1,1 | ● | Zinc Oxide in Water | ● |
| Potassium Bromide | ● | Skelly Solve E. L. | ● | Starch Base | ● | Trichlorethylene | ● | Zinc Oxide in Oil | ● |
| Potassium Carbonate | ● | Slate to 400 Mesh | ● | Stearic Acid | ● | Trichlorethylene-Dry | ● | Zinc Sulfate | ● |
| Potassium Chlorate | ● | Soap Lye | ✕ | Steep Water | ● | Tricresyl Phosphate | ● | Zincolate | ● |
| Potassium Chloride Sol. | ● | Soap Solutions (Stearates) | ● | Sterilization Steam | ● | Triethanolamine | ● | Zirconyl Nitrate | ● |
| Potassium Chromate | ● | Soap Stone Air Blown | ● | Stillage Distillers | ● | Triethylene Glycol | ● | Zirconyl Sulfate | ● |
| Potassium Cyanide Sol. | ● | Soda Pulp | ● | Stoddard Solvent | ● | Trioxane | ● | Steam High Pressure (≤ 70 psi) | ✕ |
| Potassium Dichromate | ● | Sodium Acetate | ● | Styrene | ● | Tungstic Acid | ● | Steam Low Pressure (≤ 70 psi) | ● |
| Potassium Ferricyanide | ● | Sodium Acid Fluoride | ● | Styrene Butadiene Latex | ● | Turpentine | ● | Sulfur Dioxide | ● |
| Potassium Hydroxide | ✕ | Sodium Aluminate | ● | Sulfamic Acid | ● | UCON § Lube | ● | Sulfur Dioxide Dry | ● |
| Potassium Iodide | ● | Sodium Arsenate | ● | Sulfan-Sulfuric Anhydride | ● | | | Sulfur Trioxide Gas | ✕ |
| Potassium Nitrate | ● | | | | | | | Sulfuric Acid Vapor | ● |
| Potassium Perchlorate | ● | | | | | | | | |

GASES

| | |
|--------------------------------|---|
| Acetylene | ● |
| Acid & Alkali Vapors | ● |
| Air | ● |
| Amine | ● |
| Ammonia | ● |
| Butane | ● |
| Butadiene Gas/Liquid | ● |
| Butylene Gas/Liquid | ● |
| By-Product Gas (Dry) | ● |
| Carbon Dioxide | ● |
| Carbon Disulfide | ● |
| Carbon Monoxide | ● |
| Chloride (Dry) | ● |
| Chlorine (Dry) | ● |
| Chlorine (Wet) | ✕ |
| Coke-Oven Gas (Cold) | ● |
| Coke-Oven Gas (Hot) | † |
| Cyanogen Chloride | ● |
| Cyanogen Gas | ● |
| Ethane | ● |
| Ether-see Diethyl Ether | ● |
| Ethylene | ● |
| Ethylene Oxide | ● |
| Freon § (11-12-21-22) | † |
| Furnace Gas (Cold) | † |
| Furnace Gas (Hot) | ● |
| Gas Drip Oil | ● |
| Gas Flue | ● |
| Gas Manufacturing | ● |
| Gas Natural | ● |
| Helium | ● |
| Hydrogen Gas - Cold | ● |
| Hydrogen Chloride | ● |
| Hydrogen Cyanide | ● |
| Hydrogen Sulfide - Wet & Dry | ● |
| Isobutane | ● |
| Methane | ● |
| Methyl Chloride | ● |
| Natural Gas - Dry | ● |
| Nitrogen Gas | ● |
| Nitrous Oxide | ● |
| Oil-Solvent Vapor | ● |
| Oxygen | ✕ |
| Ozone | ✕ |
| Producer Gas 50 PSI | ● |
| Propane | ● |
| Propylene | ● |
| Steam High Pressure (≤ 70 psi) | ✕ |
| Steam Low Pressure (≤ 70 psi) | ● |
| Sulfur Dioxide | ● |
| Sulfur Dioxide Dry | ● |
| Sulfur Trioxide Gas | ✕ |
| Sulfuric Acid Vapor | ● |

- NOTE: 1. The above information does not constitute a recommendation of sealant use. It is intended only as a guide for consideration by the purchaser with the expectation of favorable confirming test results. It is impossible to test sealant reaction with the multitude of chemicals in existence, therefore, compatibility has been estimated based on a wide variety of customer experience.
2. With the stringent action of such chemicals as Freon §, strong cold acids and caustics, thorough evaluation is suggested. Sealing of hot corrosive chemicals is not recommended.
3. Contact Henkel Corporation for use with chemicals not covered by this information.

§ Listing(s) may be Brand Name(s) or Trademarks for chemicals of Corporations other than Henkel. Freon is a reg. trademark of E.I. DuPont de Numours, Co., Inc.

Loctite® product numbers in red are worldwide or application-specific products.

(This is a list of chemical stability only. It does not constitute approval for use in the processing of foods, drugs, cosmetics, pharmaceuticals, and ingestible chemicals.)

Loctite® sealants are not recommended for use in pure oxygen or chlorine environments or in conjunction with strong oxidizing agents, an explosive reaction can result.

The data contained herein are furnished for information only and are believed to be reliable. We cannot assume responsibility for the results obtained by others over whose methods we have no control. It is the user's responsibility to determine suitability for the user's purpose of any production methods mentioned herein and to adopt such precautions as may be advisable for the protection of property and of persons against any hazards that may be involved in the handling and use thereof.

In light of the foregoing, HENKEL CORPORATION SPECIFICALLY DISCLAIMS ALL WARRANTIES OF MERCHANTABILITY OR FITNESS FOR A PARTICULAR PURPOSE ARISING FROM SALE OR USE OF HENKEL CORPORATION'S PRODUCTS. HENKEL CORPORATION

SPECIFICALLY DISCLAIMS ANY LIABILITY FOR CONSEQUENTIAL OR INCIDENTAL DAMAGES OF ANY KIND, INCLUDING LOST PROFITS. The discussion herein of various processes or compositions is not to be interpreted as a representation that they are free from domination of patents owned by others or as a license under any HENKEL CORPORATION patents which may cover such processes or compositions. We recommend that each prospective user test the proposed application to determine its suitability for the purposes intended prior to incorporation to determine its suitability for manufacturing process using this data as a guide. This product may be covered by one or more United States or foreign patents or patent application.

Henkel



Product Ordering Information

■ Search by Loctite® Product / Part number on these pages.

| Product/ Part # | Product Name | Package Size | Page | Product/ Part # | Product Name | Package Size | Page |
|--------------------|---|-----------------|--------|--------------------|--|-----------------|-----------|
| 55 | Loctite® 55 Pipe Sealing Cord | 50 m | 4, 5 | 668 | Loctite® 668 Retaining Compound - Stick | 19 g | 8, 9 |
| 55 | Loctite® 55 Pipe Sealing Cord | 150 m | 4, 5 | 680 | Loctite® 680 Retaining Compound | 50 ml | 8, 9 |
| 220 | Loctite® 220 Threadlocker | 250 ml | 2, 3 | 680 | Loctite® 680 Retaining Compound | 250 ml | 8, 9 |
| 222 | Loctite® 222 Threadlocker | 50 ml | 2, 3 | 790 | Loctite® 790 Chisel Gasket Remover | 18 oz. | 6, 22, 23 |
| 222 | Loctite® 222 Threadlocker | 250 ml | 2, 3 | 2440 | Loctite® 2440 Threadlocker - Primerless | 50 ml | 2, 3 |
| 242 | Loctite® 242 Threadlocker | 50 ml | 2, 3 | 2440 | Loctite® 2440 Threadlocker - Primerless | 250 ml | 2, 3 |
| 242 | Loctite® 242 Threadlocker | 250 ml | 2, 3 | 2760 | Loctite® 2760 Threadlocker | 50 ml | 2, 3 |
| 243 | Loctite® 243 Threadlocker - Oil Tolerance | 50 ml | 2, 3 | 2760 | Loctite® 2760 Threadlocker | 250 ml | 2, 3 |
| 243 | Loctite® 243 Threadlocker - Oil Tolerance | 250 ml | 2, 3 | 5651 | Loctite® 5651 Thread Sealant | 250 ml | 4, 5 |
| 248 | Loctite® 248 Threadlocker - Stick | 9 g | 2, 3 | 5699 | Loctite® 5699 Grey | 370 g | 6, 7 |
| 248 | Loctite® 248 Threadlocker - Stick | 19 g | 2, 3 | 5920 | Loctite® 5920 Copper | 370 g | 6, 7 |
| 262 | Loctite® 262 Threadlocker | 50 ml | 2, 3 | 5920 | Loctite® 5920 Copper | 20 kg | 6, 7 |
| 262 | Loctite® 262 Threadlocker | 250 ml | 2, 3 | 7649 | Loctite® 7649 Primer N | | 2, 4, 8 |
| 268 | Loctite® 268 Threadlocker - Stick | 9 g | 2, 3 | 20162 | Loctite® ODC-Free Cleaner & Degreaser - Pump Spray | 16 oz. | 22, 23 |
| 268 | Loctite® 268 Threadlocker - Stick | 19 g | 2, 3 | 20260 | Loctite® ODC-Free Cleaner & Degreaser - Can | 1 gal. | 22, 23 |
| 271 | Loctite® 271 Threadlocker | 50 ml | 2, 3 | 21425 | Loctite® Fixmaster® Fast Cure Epoxy Mixer Cups - Can of 10 | 0.12 fl. oz. | 24, 25 |
| 271 | Loctite® 271 Threadlocker | 250 ml | 2, 3 | 21426 | Loctite® Fixmaster® Fast Cure Epoxy Mixer Cups - Can of 10 | 1 fl. oz. | 24, 25 |
| 272 | Loctite® 272 Threadlocker | 50 ml | 2, 3 | 22355 | Loctite® ODC-Free Cleaner & Degreaser - Aerosol | 15 oz. | 22, 23 |
| 272 | Loctite® 272 Threadlocker | 250 ml | 2, 3 | 25791 | Loctite® Electrical Contact & Parts Cleaner | 11 oz. | 22, 23 |
| 290 | Loctite® 290 Threadlocker | 50 ml | 2, 3 | 28654 | Loctite® Form-A-Thread Repair Stripped Thread Repair Kit | | 26 |
| 290 | Loctite® 290 Threadlocker | 250 ml | 2, 3 | 30507 | Loctite® Instant Gasket - Can | 7 oz. | 6, 7 |
| 330 | Loctite® 330 Depend Adhesive - Cartridge | 315 ml | 24, 25 | 30509 | Loctite® Instant Gasket - Cartridge | 5 oz. | 6, 7 |
| 330 | Loctite® 330 Depend Adhesive - Syringe | 25 ml | 24, 25 | 30539 | Loctite® Extend Rust Treatment - Aerosol | 10.25 oz. | 22, 23 |
| 380 | Loctite® 380 Black Max® Instant Adhesive | 1 oz. | 24, 25 | 30545 | Loctite® Non-Chlorinated Parts Cleaner - Aerosol | 14.75 oz. | 22, 23 |
| 401 | Loctite® 401 Prism® Instant Adhesive | 2 oz. | 24, 25 | 30546 | Loctite® Multi-Purpose Glass Cleaner - Aerosol | 18.75 oz. | 22, 23 |
| 404 | Loctite® 404 Quick Set Instant Adhesive | 1/3 oz. | 24, 25 | 31899 | Loctite® 55 Pipe Sealing Cord | 150 M | 4, 5 |
| 404 | Loctite® 404 Quick Set Instant Adhesive | 4 oz. | 24, 25 | 33510 | Loctite® Fixmaster® Super Grout - Red | 5 gal. kit | 14, 15 |
| 454 | Loctite® 454 Prism® Instant Adhesive | 3 g | 24, 25 | 34026 | Loctite® Marine Grade Anti-Seize - Brushtop | 16 oz. | 20, 21 |
| 454 | Loctite® 454 Prism® Instant Adhesive | 20 g | 24, 25 | 34395 | Loctite® Marine Grade Anti-Seize - Brushtop | 8 oz. | 20, 21 |
| 510 | Loctite® 510 Gasket Eliminator Flange Sealant | 50 ml | 6, 7 | 34517 | Loctite® White Hi-Temp Anti-Seize | 8 oz. | 20, 21 |
| 510 | Loctite® 510 Gasket Eliminator Flange Sealant | 300 ml | 6, 7 | 34518 | Loctite® White Hi-Temp Anti-Seize | 1 lb. | 20, 21 |
| 515 | Loctite® 515 Gasket Eliminator Flange Sealant | 50 ml | 6, 7 | 36252 | Loctite® Orange Lotion Hand Cleaner | 400 ml | 22, 23 |
| 515 | Loctite® 515 Gasket Eliminator Flange Sealant | 300 ml | 6, 7 | 36253 | Loctite® Orange Lotion Hand Cleaner | 4 L | 22, 23 |
| 518 | Loctite® 518 Gasket Eliminator Flange Sealant | 50 ml | 6, 7 | 36646 | Loctite® Non-Flammable Elec. Contact & Parts Cleaner | 14 oz. | 22, 23 |
| 518 | Loctite® 518 Gasket Eliminator Flange Sealant | 300 ml | 6, 7 | 37316 | Loctite® Fixmaster® Marine Chocking - Orange | 1 gal. kit | 14, 15 |
| 534 | Loctite® 534 Hi-Tack Gasket Dressing - Stick | 19g | 6, 7 | 37370 | Loctite® Pipe Sealing Cord | 50 m | 4, 5 |
| 545 | Loctite® 545 Thread Sealant | 50 ml | 4, 5 | 37719 | Loctite® Fixmaster® Instant Belt Repair - Amber | 1 lb. kit | 18, 19 |
| 545 | Loctite® 545 Thread Sealant | 250 ml | 4, 5 | 37772 | Loctite® 248 Threadlocker - Stick | 9 g | 2, 3 |
| 548 | Loctite® 548 Gasket Eliminator Flange Sealant - Stick | 19 g | 6, 7 | 37773 | Loctite® 248 Threadlocker - Stick | 19 g | 2, 3 |
| 561 | Loctite® 561 PST Pipe Sealant with PTFE - Stick | 19 g | 4, 5 | 37774 | Loctite® 268 Threadlocker - Stick | 9 g | 2, 3 |
| 565 | Loctite® 565 PST Thread Sealant | 50 ml | 4, 5 | 37775 | Loctite® 268 Threadlocker - Stick | 19 g | 2, 3 |
| 565 | Loctite® 565 PST Thread Sealant | 250 ml | 4, 5 | 37776 | Loctite® 561 PST Pipe Sealant with PTFE - Stick | 19 g | 4, 5 |
| 567 | Loctite® 567 PST Thread Sealant with PTFE | 50 ml | 4, 5 | 37782 | Loctite® C5-A® Copper Based Anti-Seize Lub. - Stick | 20 g | 20, 21 |
| 567 | Loctite® 567 PST Thread Sealant with PTFE | 250 ml | 4, 5 | 37783 | Loctite® Silver Grade Anti-Seize - Stick | 20 g | 20, 21 |
| 577 | Loctite® 577 Thread Sealant | 50 ml | 4, 5 | 39088 | Loctite® Fixmaster® Fast Cure Epoxy Mixer Cups - 4 Pack Cups | 0.12 fl. oz. | 24, 25 |
| 577 | Loctite® 577 Thread Sealant | 250 ml | 4, 5 | 39366 | Loctite® Fixmaster® Concrete Repair Epoxy - Stick | 4 oz. | 14, 15 |
| 581 | Loctite® 581 Thread Sealant | 50 ml | 4, 5 | 39633 | Loctite® Fixmaster® Rapid Rubber Repair Stat. Mixers | 6/bag | 27 |
| 581 | Loctite® 581 Thread Sealant | 250 ml | 4, 5 | 39635 | Loctite® Fixmaster® Rapid Rubber Repair Dispenser | | 27 |
| 587 | Loctite® 587 Blue RTV Silicone | 85 g | 6, 7 | 39636 | Loctite® Fixmaster® Flex Cleaner | 4 fl. oz. | 18, 19 |
| 587 | Loctite® 587 Blue RTV Silicone | 370 g | 6, 7 | 39637 | Loctite® Fixmaster® Fast Set Grout - Red | 2 gal. kit | 14, 15 |
| 596 | Loctite® 596 Superflex Industrial Grade Silicone | 85 g | 6, 7 | 39901 | Loctite® Zinc Anti-Seize - Can | 1 lb. | 20, 21 |
| 596 | Loctite® 596 Superflex Industrial Grade Silicone | 300 ml | 6, 7 | 39915 | Loctite® Big Foot Zero V.O.C. - Grey | 1 gal. kit | 16, 17 |
| 598 | Loctite® 598 Black | 85 g | 6, 7 | 39916 | Loctite® Urethane Sealant | 10.2 oz. | 14, 15 |
| 603 | Loctite® 603 Retaining Compound | 50 ml | 8, 9 | 39917 | Loctite® Fixmaster® Fast Set Steel Putty | 1 lb. kit | 10, 11 |
| 603 | Loctite® 603 Retaining Compound | 250 ml | 8, 9 | 39918 | Loctite® Nordbak® High Impact Wearing Compound | 25 lb. kit | 12, 13 |
| 609 | Loctite® 609 Retaining Compound | 50 ml | 8, 9 | 40270 | Loctite® Fixmaster® Magna-Crete Winter Additive | 1 lb. kit | 14, 15 |
| 609 | Loctite® 609 Retaining Compound | 250 ml | 8, 9 | 40271 | Loctite® Fixmaster® Magna-Crete Summer Additive | 1 lb. kit | 14, 15 |
| 620 | Loctite® 620 Retaining Compound | 50 ml | 8, 9 | 40281 | Loctite® 581 Thread Sealant | 50 ml | 4, 5 |
| 620 | Loctite® 620 Retaining Compound | 250 ml | 8, 9 | 40292 | Loctite® 581 Thread Sealant | 250 ml | 4, 5 |
| 638 | Loctite® 638 Retaining Compound | 50 ml | 8, 9 | 40391 | Loctite® 668 Retaining Compound - Stick | 19 g | 8, 9 |
| 638 | Loctite® 638 Retaining Compound | 250 ml | 8, 9 | 40392 | Loctite® 534 Hi-Tack Gasket Dressing - Stick | 19 g | 6, 7 |
| 641 | Loctite® 641 Retaining Compound | 50 ml | 8, 9 | 40393 | Loctite® 548 Gasket Eliminator Flange Sealant - Stick | 19 g | 6, 7 |
| 660 | Loctite® 660 Retaining Compound | 50 ml | 8, 9 | 51003 | Loctite® C5-A Copper Based Anti-Seize Lub. - Aerosol | 12 oz. | 20, 21 |

| Product/ Part # | Product Name | Package Size | Page |
|--------------------|---|-----------------|------------|
| 51007 | Loctite® C5-A Copper Based Anti-Seize Lub. – Brushtop | 1 lb. | 20, 21 |
| 51048 | Loctite® Moly Paste – Brushtop | 8 oz. | 20, 21 |
| 51049 | Loctite® Moly Paste – Brushtop | 1 lb. | 20, 21 |
| 51050 | Loctite® Moly Paste – Aerosol | 12 oz. | 20, 21 |
| 51084 | Loctite® Graphite-50 Anti-Seize – Can | 1 lb. | 20, 21 |
| 51094 | Loctite® Moly-50 Anti-Seize – Can | 1 lb. | 20, 21 |
| 51115 | Loctite® N-1000 High Purity Anti-Seize – Brushtop | 8 oz. | 20, 21 |
| 51116 | Loctite® N-1000 High Purity Anti-Seize – Can | 1 lb. | 20, 21 |
| 51117 | Loctite® N-1000 High Purity Anti-Seize – Can | 2 lb. | 20, 21 |
| 51145 | Loctite® Moly Paste – Can | 15 lb. | 20, 21 |
| 51147 | Loctite® C5-A Copper Based Anti-Seize Lub. – Brushtop | 8 oz. | 20, 21 |
| 51168 | Loctite® Food Grade Anti-Seize – Brushtop | 8 oz. | 20, 21 |
| 51170 | Loctite® Food Grade Anti-Seize – Can | 2 lb. | 20, 21 |
| 51243 | Loctite® N-5000 High Purity Anti-Seize – Brushtop | 8 oz. | 20, 21 |
| 51245 | Loctite® N-5000 High Purity Anti-Seize – Can | 8 lb. | 20, 21 |
| 51246 | Loctite® N-5000 High Purity Anti-Seize – Can | 2 lb. | 20, 21 |
| 51269 | Loctite® N-5000 High Purity Anti-Seize – Brushtop | 1 lb. | 20, 21 |
| 51270 | Loctite® N-7000 High Purity Anti-Seize – Brushtop | 1 lb. | 20, 21 |
| 51272 | Loctite® N-7000 High Purity Anti-Seize – Brushtop | 8 oz. | 20, 21 |
| 51273 | Loctite® N-7000 High Purity Anti-Seize – Can | 2 oz. | 20, 21 |
| 51286 | Loctite® Nickel Anti-Seize – Aerosol | 12 oz. | 20, 21 |
| 51346 | Loctite® N-5000 High Purity Anti-Seize – Tube | 1 oz. | 20, 21 |
| 51572 | Loctite® High Performance N-5000 High Purity Anti-Seize – Brushtop | 1 lb. | 20, 21 |
| 51605 | Loctite® Heavy Duty Anti-Seize – Brushtop | 9 oz. | 20, 21 |
| 51606 | Loctite® Heavy Duty Anti-Seize – Brushtop | 1.2 lb. | 20, 21 |
| 75430 | Loctite® Extend Rust Treatment – Bottle | 1 qt. | 22, 23 |
| 75448 | Loctite® Extend Rust Treatment – Bottle | 1 gal. | 22, 23 |
| 75465 | Loctite® Extend Rust Treatment – Pail | 5 gal. | 22, 23 |
| 76732 | Loctite® Silver Grade Anti-Seize – Brushtop | 8 oz. | 20, 21 |
| 76759 | Loctite® Silver Grade Anti-Seize – Aerosol | 12 oz. | 20, 21 |
| 76764 | Loctite® Silver Grade Anti-Seize – Brushtop | 1 lb. | 20, 21 |
| 77124 | Loctite® Nickel Anti-Seize – Brushtop | 8 oz. | 20, 21 |
| 77164 | Loctite® Nickel Anti-Seize – Brushtop | 1 lb. | 20, 21 |
| 79040 | Loctite® Chisel Gasket Remover 790 | 18 oz. | 6, 22, 23 |
| 81120 | Loctite® Fixmaster® Poxypak Fast Cure Epoxy – Syringe | 1 oz. | 24, 25 |
| 82093 | Loctite® Fixmaster® Underwater Repair Epoxy – Stick | 4 oz. | 10, 26 |
| 82244 | Loctite® Natural Blue® Biodegradable Cleaner & Degreaser – Bottle | 4 fl. oz. | 22, 23 |
| 82249 | Loctite® Natural Blue® Biodegradable Cleaner & Degreaser – Spray Bottle | 24 fl. oz. | 22, 23 |
| 82251 | Loctite® Natural Blue® Biodegradable Cleaner & Degreaser – Bottle | 1 gal. | 22, 23 |
| 82253 | Loctite® Natural Blue® Biodegradable Cleaner & Degreaser – Pail | 5 gal. | 22, 23 |
| 82254 | Loctite® Natural Blue® Biodegradable Cleaner & Degreaser – Pail | 15 gal. | 22, 23 |
| 82255 | Loctite® Natural Blue® Biodegradable Cleaner & Degreaser – Drum | 55 gal. | 22, 23 |
| 94142 | Loctite® Big Foot Water-Based Primer/Sealer | 1 gal. | 16, 17 |
| 95551 | Loctite® Fixmaster® Magna-Crete – Grey | 1 gal. kit | 14, 15 |
| 95555 | Loctite® Fixmaster® Magna-Crete – Grey | 5 gal. kit | 14, 15 |
| 95581 | Loctite® Big Foot Acrylic Primer | 1 gal. | 16, 17 |
| 95591 | Loctite® Big Foot Acrylic Pedestrian Grade – Grey | 1 gal. kit | 16, 17 |
| 96092 | Loctite® Nordbak® Chemical Resistant Coating | 12 lb. kit | 12, 13 |
| 96102 | Loctite® Fixmaster® Marine Chocking – Orange | 2 gal. kit | 14, 15 |
| 96121 | Loctite® Phenolic Roller | | 27 |
| 96131 | Loctite® Mixer Blades | | 16, 17, 27 |
| 96132 | Loctite® Big Foot Metal Primer | 1 gal. | 16, 17 |
| 96153 | Loctite® Bristle Roller | | 27 |
| 96211 | Loctite® Big Foot Heavy Duty Pedestrian Grade – Black | 1 gal. kit | 16, 17 |
| 96221 | Loctite® Big Foot Vehicular Grade – Black | | 16 |
| 96225 | Loctite® Big Foot Vehicular Grade – Grey | 5 gal. kit | 16, 17 |

| Product/ Part # | Product Name | Package Size | Page |
|--------------------|---|-----------------|--------|
| 96251 | Loctite® Big Foot Vehicular Grade – Grey | 1 gal. kit | 16, 17 |
| 96261 | Loctite® Big Foot Heavy Duty Pedestrian Grade – Grey | 1 gal. kit | 16, 17 |
| 96265 | Loctite® Big Foot Heavy Duty Pedestrian Grade – Grey | 5 gal. kit | 16, 17 |
| 96303 | Loctite® Nordbak® Combo Bead Wearing Compound – Grey | 6 lb. kit | 12, 13 |
| 96321 | Loctite® Pipe Repair Kit – 5 x 182 cm | | 26 |
| 96322 | Loctite® Pipe Repair Kit – 10 x 365 cm | | 26 |
| 96332 | Loctite® Nordbak® Ultra High Temp. Pneu-Wear – Red | 25 lb. kit | 12, 13 |
| 96392 | Loctite® Nordbak® Ultra High Temperature Wearing Compound – Red | 25 lb. kit | 12, 13 |
| 96433 | Loctite® Nordbak® High Temperature Brushable Ceramic – Red | 2 lb. kit | 12, 13 |
| 96443 | Loctite® Nordbak® Brushable Ceramic – White | 2 lb. kit | 12, 13 |
| 96495 | Loctite® Fixmaster® High Performance Quartz – Grey | 42 lb. kit | 14, 15 |
| 96583 | Loctite® Fixmaster® Wet Surface Repair Putty | 1 lb. kit | 10, 11 |
| 96675 | Loctite® Fixmaster® Rapid Rubber Repair – Cartridge | 400 ml | 18, 19 |
| 96676 | Loctite® Fixmaster® Rapid Rubber Repair – Coaxial Cartridge | 150 ml | 18, 19 |
| 96677 | Loctite® Fixmaster® Rapid Rubber Repair – Kit | 400 ml | 19, 26 |
| 97001 | Loctite® Bottle Hand Pump | | 27 |
| 97273 | Loctite® Fixmaster® Flex Accelerator | 3.5 fl. oz. | 18, 19 |
| 97422 | Loctite® Fixmaster® Flex 80 Putty – Black | 6 lb. kit | 18, 19 |
| 97423 | Loctite® Fixmaster® Flex 80 Putty – Black | 1 lb. kit | 18, 19 |
| 97443 | Loctite® Fixmaster® Stainless Steel Putty | 1 lb. kit | 10, 11 |
| 97453 | Loctite® Fixmaster® Aluminum Liquid | 1 lb. kit | 10, 11 |
| 97463 | Loctite® Fixmaster® Aluminum Putty | 1 lb. kit | 10, 11 |
| 97473 | Loctite® Fixmaster® Super Metal Putty | 1 lb. kit | 10, 11 |
| 97483 | Loctite® Fixmaster® Steel Liquid | 1 lb. kit | 10, 11 |
| 97484 | Loctite® Fixmaster® Steel Liquid | 4 lb. kit | 10, 11 |
| 97572 | Loctite® Fixmaster® Marine Chocking – Green | 2 gal. kit | 14, 15 |
| 97762 | Loctite® Nordbak® Ceramic Tile Adhesive – Beige | 20 lb. kit | 12, 13 |
| 98372 | Loctite® Nordbak® High Temp. Pneu-Wear – Grey | 25 lb. kit | 12, 13 |
| 98382 | Loctite® Nordbak® Pneu-Wear | 25 lb. kit | 12, 13 |
| 98383 | Loctite® Nordbak® Pneu-Wear | 3 lb. kit | 12, 13 |
| 98468 | Loctite® Fixmaster® Flex Rubber Primer | 2.4 fl. oz. | 18, 19 |
| 98732 | Loctite® Nordbak® Brushable Ceramic – Grey | 6 lb. kit | 12, 13 |
| 98733 | Loctite® Nordbak® Brushable Ceramic – Grey | 2 lb. kit | 12, 13 |
| 98742 | Loctite® Fixmaster® Wear Resistant Putty – Grey | 1 lb. kit | 12, 13 |
| 98743 | Loctite® Fixmaster® Wear Resistant Putty – Grey | 3 lb. kit | 12, 13 |
| 98853 | Loctite® Fixmaster® Metal Magic Steel – Stick | 4 oz. | 10, 11 |
| 99112 | Loctite® Nordbak® High Temperature Wearing Compound – Grey | 25 lb. kit | 12, 13 |
| 99361 | Loctite® Fixmaster® Floor Fill – Grey | 10 lb. kit | 14, 15 |
| 99365 | Loctite® Fixmaster® Floor Fill – Grey | 40 lb. kit | 14, 15 |
| 99545 | Loctite® Fixmaster® Deep Pour Grout – Black | 5 gallon kit | 14, 15 |
| 99626 | Loctite® Fixmaster® Etching Agent | 3 fl. oz. | 18, 19 |
| 99812 | Loctite® Nordbak® Wearing Compound | 25 lb. kit | 12, 13 |
| 99813 | Loctite® Nordbak® Wearing Compound | 5 lb. kit | 12, 13 |
| 99912 | Loctite® Fixmaster® Steel Putty | 25 lb. kit | 10, 11 |
| 99913 | Loctite® Fixmaster® Steel Putty | 1 lb. kit | 10, 11 |
| 99914 | Loctite® Fixmaster® Steel Putty | 4 lb. kit | 10, 11 |
| 983531 | Loctite® Manual Applicator | | 27 |
| 00112 | Loctite® O-Ring Making Kit | | 26 |
| 39020J | Loctite® Big Foot Heavy Duty Pedestrian Grade – Yellow | 1 gal. kit | 16, 17 |
| 39021J | Loctite® Big Foot Heavy Duty Pedestrian Grade – Tile Red | 1 gal. kit | 16, 17 |
| 39022J | Loctite® Big Foot Zero V.O.C. – Yellow | 1 gal. kit | 16, 17 |
| 39023J | Loctite® Big Foot Zero V.O.C. – Tile Red | 1 gal. kit | 16, 17 |
| 96211G | Loctite® Big Foot Heavy Duty Pedestrian Grade – Green | 1 gal. kit | 16, 17 |
| 96231G | Loctite® Big Foot Zero V.O.C. – Green | 1 gal. kit | 16, 17 |
| E-120HP | Loctite® E-120HP Hysol® Epoxy Adhesive | 50 ml | 24, 25 |
| E-120HP | Loctite® E-120HP Hysol® Epoxy Adhesive | 200 ml | 24, 25 |
| E-120HP | Loctite® E-120HP Hysol® Epoxy Adhesive | 400 ml | 24, 25 |



Product Ordering Information

■ Search by Loctite® Product name on these pages.

| Product Name | Product/ Part # | Package Size | Page |
|---|--------------------|-----------------|--------|
| Loctite® 220 Threadlocker | 220 | 250 ml | 2, 3 |
| Loctite® 222 Threadlocker | 222 | 50 ml | 2, 3 |
| Loctite® 222 Threadlocker | 222 | 250 ml | 2, 3 |
| Loctite® 242 Threadlocker | 242 | 50 ml | 2, 3 |
| Loctite® 242 Threadlocker | 242 | 250 ml | 2, 3 |
| Loctite® 243 Threadlocker – Oil Tolerance | 243 | 50 ml | 2, 3 |
| Loctite® 243 Threadlocker – Oil Tolerance | 243 | 250 ml | 2, 3 |
| Loctite® 2440 Threadlocker - Primerless | 2440 | 50 ml | 2, 3 |
| Loctite® 2440 Threadlocker - Primerless | 2440 | 250 ml | 2, 3 |
| Loctite® 248 Threadlocker – Stick | 248 | 9 g | 2, 3 |
| Loctite® 248 Threadlocker – Stick | 248 | 19 g | 2, 3 |
| Loctite® 248 Threadlocker – Stick | 37772 | 9 g | 2, 3 |
| Loctite® 248 Threadlocker – Stick | 37773 | 19 g | 2, 3 |
| Loctite® 262 Threadlocker | 262 | 50 ml | 2, 3 |
| Loctite® 262 Threadlocker | 262 | 250 ml | 2, 3 |
| Loctite® 268 Threadlocker – Stick | 268 | 9 g | 2, 3 |
| Loctite® 268 Threadlocker – Stick | 268 | 19 g | 2, 3 |
| Loctite® 268 Threadlocker – Stick | 37774 | 9 g | 2, 3 |
| Loctite® 268 Threadlocker – Stick | 37775 | 19 g | 2, 3 |
| Loctite® 271 Threadlocker | 271 | 50 ml | 2, 3 |
| Loctite® 271 Threadlocker | 271 | 250 ml | 2, 3 |
| Loctite® 272 Threadlocker | 272 | 50 ml | 2, 3 |
| Loctite® 272 Threadlocker | 272 | 250 ml | 2, 3 |
| Loctite® 2760 Threadlocker | 2760 | 50 ml | 2, 3 |
| Loctite® 2760 Threadlocker | 2760 | 250 ml | 2, 3 |
| Loctite® 290 Threadlocker | 290 | 50 ml | 2, 3 |
| Loctite® 290 Threadlocker | 290 | 250 ml | 2, 3 |
| Loctite® 330 Depend Adhesive – Cartridge | 330 | 315 ml | 24, 25 |
| Loctite® 330 Depend Adhesive – Syringe | 330 | 25 ml | 24, 25 |
| Loctite® 380 Black Max® Instant Adhesive | 380 | 1 oz. | 24, 25 |
| Loctite® 401 Prism® Instant Adhesive | 401 | 20 g | 24, 25 |
| Loctite® 404 Quick Set Instant Adhesive | 404 | 1/3 oz. | 24, 25 |
| Loctite® 404 Quick Set Instant Adhesive | 404 | 4 oz. | 24, 25 |
| Loctite® 454 Prism® Instant Adhesive | 454 | 3 g | 24, 25 |
| Loctite® 454 Prism® Instant Adhesive | 454 | 20 g | 24, 25 |
| Loctite® 510 Gasket Eliminator Flange Sealant | 510 | 50 ml | 6, 7 |
| Loctite® 510 Gasket Eliminator Flange Sealant | 510 | 300 ml | 6, 7 |
| Loctite® 515 Gasket Eliminator Flange Sealant | 515 | 50 ml | 6, 7 |
| Loctite® 515 Gasket Eliminator Flange Sealant | 515 | 300 ml | 6, 7 |
| Loctite® 518 Gasket Eliminator Flange Sealant | 518 | 50 ml | 6, 7 |
| Loctite® 518 Gasket Eliminator Flange Sealant | 518 | 300 ml | 6, 7 |
| Loctite® 534 Hi-Tack Gasket Dressing – Stick | 534 | 19g | 6, 7 |
| Loctite® 534 Hi-Tack Gasket Dressing – Stick | 40392 | 19 g | 6, 7 |
| Loctite® 545 Thread Sealant | 545 | 50 ml | 4, 5 |
| Loctite® 545 Thread Sealant | 545 | 250 ml | 4, 5 |
| Loctite® 548 Gasket Eliminator Flange Sealant – Stick | 548 | 19 g | 6, 7 |
| Loctite® 548 Gasket Eliminator Flange Sealant – Stick | 40393 | 19 g | 6, 7 |
| Loctite® 55 Pipe Sealing Cord | 55 | 50 m | 4, 5 |
| Loctite® 55 Pipe Sealing Cord | 55 | 150 m | 4, 5 |
| Loctite® 55 Pipe Sealing Cord | 31899 | 150 M | 4, 5 |
| Loctite® 561 PST Pipe Sealant with PTFE – Stick | 37776 | 19 g | 4, 5 |
| Loctite® 561 PST Pipe Sealant with PTFE – Stick | 561 | 19 g | 4, 5 |
| Loctite® 565 PST Thread Sealant | 565 | 50 ml | 4, 5 |
| Loctite® 565 PST Thread Sealant | 565 | 250 ml | 4, 5 |
| Loctite® 5651 Thread Sealant | 5651 | 250 ml | 4, 5 |
| Loctite® 567 PST Thread Sealant with PTFE | 567 | 50 ml | 4, 5 |
| Loctite® 567 PST Thread Sealant with PTFE | 567 | 250 ml | 4, 5 |
| Loctite® 5699 Grey | 5699 | 370 g | 6, 7 |
| Loctite® 577 Thread Sealant | 577 | 50 ml | 4, 5 |
| Loctite® 577 Thread Sealant | 577 | 250 ml | 4, 5 |
| Loctite® 581 Thread Sealant | 581 | 50 ml | 4, 5 |
| Loctite® 581 Thread Sealant | 581 | 250 ml | 4, 5 |
| Loctite® 581 Thread Sealant | 40281 | 50 ml | 4, 5 |

| Product Name | Product/ Part # | Package Size | Page |
|--|--------------------|-----------------|-----------|
| Loctite® 581 Thread Sealant | 40292 | 250 ml | 4, 5 |
| Loctite® 587 Blue RTV Silicone | 587 | 85 g | 6, 7 |
| Loctite® 587 Blue RTV Silicone | 587 | 370 g | 6, 7 |
| Loctite® 5920 Copper | 5920 | 370 g | 6, 7 |
| Loctite® 5920 Copper | 5920 | 20 kg | 6, 7 |
| Loctite® 596 Superflex Industrial Grade Silicone | 596 | 85 g | 6, 7 |
| Loctite® 596 Superflex Industrial Grade Silicone | 596 | 300 ml | 6, 7 |
| Loctite® 598 Black | 598 | 85 g | 6, 7 |
| Loctite® 603 Retaining Compound | 603 | 50 ml | 8, 9 |
| Loctite® 603 Retaining Compound | 603 | 250 ml | 8, 9 |
| Loctite® 609 Retaining Compound | 609 | 50 ml | 8, 9 |
| Loctite® 609 Retaining Compound | 609 | 250 ml | 8, 9 |
| Loctite® 620 Retaining Compound | 620 | 50 ml | 8, 9 |
| Loctite® 620 Retaining Compound | 620 | 250 ml | 8, 9 |
| Loctite® 638 Retaining Compound | 638 | 50 ml | 8, 9 |
| Loctite® 638 Retaining Compound | 638 | 250 ml | 8, 9 |
| Loctite® 641 Retaining Compound | 641 | 50 ml | 8, 9 |
| Loctite® 660 Retaining Compound | 660 | 50 ml | 8, 9 |
| Loctite® 668 Retaining Compound – Stick | 668 | 19 g | 8, 9 |
| Loctite® 668 Retaining Compound – Stick | 40391 | 19 g | 8, 9 |
| Loctite® 680 Retaining Compound | 680 | 50 ml | 8, 9 |
| Loctite® 680 Retaining Compound | 680 | 250 ml | 8, 9 |
| Loctite® 7649 Primer N | 7649 | | 2, 4, 8 |
| Loctite® 790 Chisel Gasket Remover | 790 | 18 oz. | 6, 22, 23 |
| Loctite® Big Foot Acrylic Pedestrian Grade – Grey | 95591 | 1 gal. kit | 16, 17 |
| Loctite® Big Foot Acrylic Primer | 95581 | 1 gal. | 16, 17 |
| Loctite® Big Foot Heavy Duty Pedestrian Grade – Tile Red | 39021J | 1 gal. kit | 16, 17 |
| Loctite® Big Foot Heavy Duty Pedestrian Grade – Yellow | 39020J | 1 gal. kit | 16, 17 |
| Loctite® Big Foot Heavy Duty Pedestrian Grade – Black | 96211 | 1 gal. kit | 16, 17 |
| Loctite® Big Foot Heavy Duty Pedestrian Grade – Green | 96211G | 1 gal. kit | 16, 17 |
| Loctite® Big Foot Heavy Duty Pedestrian Grade – Grey | 96261 | 1 gal. kit | 16, 17 |
| Loctite® Big Foot Heavy Duty Pedestrian Grade – Grey | 96265 | 5 gal. kit | 16, 17 |
| Loctite® Big Foot Metal Primer | 96132 | 1 gal. | 16, 17 |
| Loctite® Big Foot Vehicular Grade – Black | 96221 | | 16 |
| Loctite® Big Foot Vehicular Grade – Grey | 96225 | 5 gal. kit | 16, 17 |
| Loctite® Big Foot Vehicular Grade – Grey | 96251 | 1 gal. kit | 16, 17 |
| Loctite® Big Foot Water-Based Primer/Sealer | 94142 | 1 gal. | 16, 17 |
| Loctite® Big Foot Zero V.O.C. – Green | 96231G | 1 gal. kit | 16, 17 |
| Loctite® Big Foot Zero V.O.C. – Grey | 39915 | 1 gal. kit | 16, 17 |
| Loctite® Big Foot Zero V.O.C. – Tile Red | 39023J | 1 gal. kit | 16, 17 |
| Loctite® Big Foot Zero V.O.C. – Yellow | 39022J | 1 gal. kit | 16, 17 |
| Loctite® Bottle Hand Pump | 97001 | | 27 |
| Loctite® Bristle Roller | 96153 | | 27 |
| Loctite® C5-A Copper Based Anti-Seize Lub. – Aerosol | 51003 | 12 oz. | 20, 21 |
| Loctite® C5-A Copper Based Anti-Seize Lub. – Brushtop | 51007 | 1 lb. | 20, 21 |
| Loctite® C5-A Copper Based Anti-Seize Lub. – Brushtop | 51147 | 8 oz. | 20, 21 |
| Loctite® C5-A® Copper Based Anti-Seize Lub. – Stick | 37782 | 20 g | 20, 21 |
| Loctite® Chisel Gasket Remover 790 | 79040 | 18 oz. | 6, 22, 23 |
| Loctite® E-120HP Hysol® Epoxy Adhesive | E-120HP | 50 ml | 24, 25 |
| Loctite® E-120HP Hysol® Epoxy Adhesive | E-120HP | 200 ml | 24, 25 |
| Loctite® E-120HP Hysol® Epoxy Adhesive | E-120HP | 400 ml | 24, 25 |
| Loctite® Electrical Contact & Parts Cleaner | 25791 | 11 oz. | 22, 23 |
| Loctite® Extend Rust Treatment – Aerosol | 30539 | 10.25 oz. | 22, 23 |
| Loctite® Extend Rust Treatment – Bottle | 75430 | 1 qt. | 22, 23 |
| Loctite® Extend Rust Treatment – Bottle | 75448 | 1 gal. | 22, 23 |
| Loctite® Extend Rust Treatment – Pail | 75465 | 5 gal. | 22, 23 |
| Loctite® Fixmaster® Aluminum Liquid | 97453 | 1 lb. kit | 10, 11 |
| Loctite® Fixmaster® Aluminum Putty | 97463 | 1 lb. kit | 10, 11 |
| Loctite® Fixmaster® Concrete Repair Epoxy – Stick | 39366 | 4 oz. | 14, 15 |
| Loctite® Fixmaster® Deep Pour Grout – Black | 99546 | 5 gallon kit | 14, 15 |
| Loctite® Fixmaster® Etching Agent | 99626 | 3 fl. oz. | 18, 19 |
| Loctite® Fixmaster® Fast Cure Epoxy Mixer Cups – 4 Pack Cups | 39088 | 0.12 fl. oz. | 24, 25 |
| Loctite® Fixmaster® Fast Cure Epoxy Mixer Cups – Can of 10 | 21425 | 0.12 fl. oz. | 24, 25 |

| Product Name | Product/Part # | Package Size | Page |
|--|----------------|--------------|------------|
| Loctite® Fixmaster® Fast Cure Epoxy Mixer Cups – Can of 10 | 21426 | 1 fl. oz. | 24, 25 |
| Loctite® Fixmaster® Fast Set Grout – Red | 39637 | 2 gal. kit | 14, 15 |
| Loctite® Fixmaster® Fast Set Steel Putty | 39917 | 1 lb. kit | 10, 11 |
| Loctite® Fixmaster® Flex Accelerator | 97273 | 3.5 fl. oz. | 18, 19 |
| Loctite® Fixmaster® Flex 80 Putty – Black | 97422 | 6 lb. kit | 18, 19 |
| Loctite® Fixmaster® Flex 80 Putty – Black | 97423 | 1 lb. kit | 18, 19 |
| Loctite® Fixmaster® Flex Cleaner | 39636 | 4 fl. oz. | 18, 19 |
| Loctite® Fixmaster® Flex Rubber Primer | 98468 | 2.4 fl. oz. | 18, 19 |
| Loctite® Fixmaster® Floor Fill – Grey | 99361 | 10 lb. kit | 14, 15 |
| Loctite® Fixmaster® Floor Fill – Grey | 99365 | 40 lb. kit | 14, 15 |
| Loctite® Fixmaster® High Performance Quartz – Grey | 96495 | 42 lb. kit | 14, 15 |
| Loctite® Fixmaster® Instant Belt Repair – Amber | 37719 | 1 lb. kit | 18, 19 |
| Loctite® Fixmaster® Magna-Crete – Grey | 95551 | 1 gal. kit | 14, 15 |
| Loctite® Fixmaster® Magna-Crete – Grey | 95555 | 5 gal. kit | 14, 15 |
| Loctite® Fixmaster® Magna-Crete Summer Additive | 40271 | 1 lb. kit | 14, 15 |
| Loctite® Fixmaster® Magna-Crete Winter Additive | 40270 | 1 lb. kit | 14, 15 |
| Loctite® Fixmaster® Marine Chocking – Green | 97572 | 2 gal. kit | 14, 15 |
| Loctite® Fixmaster® Marine Chocking – Orange | 37316 | 1 gal. kit | 14, 15 |
| Loctite® Fixmaster® Marine Chocking – Orange | 96102 | 2 gal. kit | 14, 15 |
| Loctite® Fixmaster® Metal Magic Steel – Slick | 98853 | 4 oz. | 10, 11 |
| Loctite® Fixmaster® Poxy Pak Fast Cure Epoxy – Syringe | 81120 | 1 oz. | 24, 25 |
| Loctite® Fixmaster® Rapid Rubber Repair – Cartridge | 96675 | 400 ml | 18, 19 |
| Loctite® Fixmaster® Rapid Rubber Repair – Coaxial Cartridge | 96676 | 150 ml | 18, 19 |
| Loctite® Fixmaster® Rapid Rubber Repair – Kit | 96677 | 400 ml | 19, 26 |
| Loctite® Fixmaster® Rapid Rubber Repair Dispenser | 39635 | | 27 |
| Loctite® Fixmaster® Rapid Rubber Repair Stat. Mixers | 39633 | 6/bag | 27 |
| Loctite® Fixmaster® Stainless Steel Putty | 97443 | 1 lb. kit | 10, 11 |
| Loctite® Fixmaster® Steel Liquid | 97483 | 1 lb. kit | 10, 11 |
| Loctite® Fixmaster® Steel Liquid | 97484 | 4 lb. kit | 10, 11 |
| Loctite® Fixmaster® Steel Putty | 99912 | 25 lb. kit | 10, 11 |
| Loctite® Fixmaster® Steel Putty | 99913 | 1 lb. kit | 10, 11 |
| Loctite® Fixmaster® Steel Putty | 99914 | 4 lb. kit | 10, 11 |
| Loctite® Fixmaster® Super Grout – Red | 33510 | 5 gal. kit | 14, 15 |
| Loctite® Fixmaster® Super Metal Putty | 97473 | 1 lb. kit | 10, 11 |
| Loctite® Fixmaster® Underwater Repair Epoxy – Stick | 82093 | 4 oz. | 10, 26 |
| Loctite® Fixmaster® Wear Resistant Putty – Grey | 98742 | 1 lb. kit | 12, 13 |
| Loctite® Fixmaster® Wear Resistant Putty – Grey | 98743 | 3 lb. kit | 12, 13 |
| Loctite® Fixmaster® Wet Surface Repair Putty | 96583 | 1 lb. kit | 10, 11 |
| Loctite® Food Grade Anti-Seize – Brushtop | 51168 | 8 oz. | 20, 21 |
| Loctite® Food Grade Anti-Seize – Can | 51170 | 2 lb. | 20, 21 |
| Loctite® Form-A-Thread Repair Stripped Thread Repair Kit | 28654 | | 26 |
| Loctite® Graphite-50 Anti-Seize – Can | 51084 | 1 lb. | 20, 21 |
| Loctite® Heavy Duty Anti-Seize – Brushtop | 51605 | 9 oz. | 20, 21 |
| Loctite® Heavy Duty Anti-Seize – Brushtop | 51606 | 1.2 lb. | 20, 21 |
| Loctite® High Performance N-5000 High Purity Anti-Seize – Brushtop | 51572 | 1 lb. | 20, 21 |
| Loctite® Instant Gasket – Can | 30507 | 7 oz. | 6, 7 |
| Loctite® Instant Gasket – Cartridge | 30509 | 5 oz. | 6, 7 |
| Loctite® Manual Applicator | 983531 | | 27 |
| Loctite® Marine Grade Anti-Seize – Brushtop | 34026 | 16 oz. | 20, 21 |
| Loctite® Marine Grade Anti-Seize – Brushtop | 34395 | 8 oz. | 20, 21 |
| Loctite® Mixer Blades | 96131 | | 16, 17, 27 |
| Loctite® Moly Paste – Aerosol | 51050 | 12 oz. | 20, 21 |
| Loctite® Moly Paste – Brushtop | 51048 | 8 oz. | 20, 21 |
| Loctite® Moly Paste – Brushtop | 51049 | 1 lb. | 20, 21 |
| Loctite® Moly Paste – Can | 51145 | 15 lb. | 20, 21 |
| Loctite® Moly-50 Anti-Seize – Can | 51094 | 1 lb. | 20, 21 |
| Loctite® Multi-Purpose Glass Cleaner – Aerosol | 30546 | 18.75 oz. | 22, 23 |
| Loctite® N-1000 High Purity Anti-Seize – Brushtop | 51115 | 8 oz. | 20, 21 |
| Loctite® N-1000 High Purity Anti-Seize – Can | 51116 | 1 lb. | 20, 21 |
| Loctite® N-1000 High Purity Anti-Seize – Can | 51117 | 2 lb. | 20, 21 |
| Loctite® N-5000 High Purity Anti-Seize – Brushtop | 51243 | 8 oz. | 20, 21 |
| Loctite® N-5000 High Purity Anti-Seize – Brushtop | 51269 | 1 lb. | 20, 21 |

| Product Name | Product/Part # | Package Size | Page |
|---|----------------|--------------|--------|
| Loctite® N-5000 High Purity Anti-Seize – Can | 51245 | 8 lb. | 20, 21 |
| Loctite® N-5000 High Purity Anti-Seize – Can | 51246 | 2 lb. | 20, 21 |
| Loctite® N-5000 High Purity Anti-Seize – Tube | 51346 | 1 oz. | 20, 21 |
| Loctite® N-7000 High Purity Anti-Seize – Brushtop | 51270 | 1 lb. | 20, 21 |
| Loctite® N-7000 High Purity Anti-Seize – Brushtop | 51272 | 8 oz. | 20, 21 |
| Loctite® N-7000 High Purity Anti-Seize – Can | 51273 | 2 oz. | 20, 21 |
| Loctite® Natural Blue® Biodegradable Cleaner & Degreaser – Bottle | 82244 | 4 fl. oz. | 22, 23 |
| Loctite® Natural Blue® Biodegradable Cleaner & Degreaser – Pail | 82253 | 5 gal. | 22, 23 |
| Loctite® Natural Blue® Biodegradable Cleaner & Degreaser – Bottle | 82251 | 1 gal. | 22, 23 |
| Loctite® Natural Blue® Biodegradable Cleaner & Degreaser – Drum | 82255 | 55 gal. | 22, 23 |
| Loctite® Natural Blue® Biodegradable Cleaner & Degreaser – Pail | 82254 | 15 gal. | 22, 23 |
| Loctite® Natural Blue® Biodegradable Cleaner & Degreaser – Spray Bottle | 82249 | 24 fl. oz. | 22, 23 |
| Loctite® Nickel Anti-Seize – Aerosol | 51286 | 12 oz. | 20, 21 |
| Loctite® Nickel Anti-Seize – Brushtop | 77124 | 8 oz. | 20, 21 |
| Loctite® Nickel Anti-Seize – Brushtop | 77164 | 1 lb. | 20, 21 |
| Loctite® Non-Chlorinated Parts Cleaner – Aerosol | 30545 | 14.75 oz. | 22, 23 |
| Loctite® Non-Flammable Elec. Contact & Parts Cleaner | 36646 | 14 oz. | 22, 23 |
| Loctite® Nordbak® Brushable Ceramic – Grey | 98732 | 6 lb. kit | 12, 13 |
| Loctite® Nordbak® Brushable Ceramic – Grey | 98733 | 2 lb. kit | 12, 13 |
| Loctite® Nordbak® Brushable Ceramic – White | 96443 | 2 lb. kit | 12, 13 |
| Loctite® Nordbak® Ceramic Tile Adhesive – Beige | 97762 | 20 lb. kit | 12, 13 |
| Loctite® Nordbak® Chemical Resistant Coating | 96092 | 12 lb. kit | 12, 13 |
| Loctite® Nordbak® Combo Bead Wearing Compound – Grey | 96303 | 6 lb. kit | 12, 13 |
| Loctite® Nordbak® High Impact Wearing Compound | 39918 | 25 lb. kit | 12, 13 |
| Loctite® Nordbak® High Temp. Pneu-Wear – Grey | 98372 | 25 lb. kit | 12, 13 |
| Loctite® Nordbak® High Temperature Brushable Ceramic – Red | 96433 | 2 lb. kit | 12, 13 |
| Loctite® Nordbak® High Temperature Wearing Compound – Grey | 99112 | 25 lb. kit | 12, 13 |
| Loctite® Nordbak® Pneu-Wear | 98382 | 25 lb. kit | 12, 13 |
| Loctite® Nordbak® Pneu-Wear | 98383 | 3 lb. kit | 12, 13 |
| Loctite® Nordbak® Ultra High Temp. Pneu-Wear – Red | 96332 | 25 lb. kit | 12, 13 |
| Loctite® Nordbak® Ultra High Temperature Wearing Compound – Red | 96392 | 25 lb. kit | 12, 13 |
| Loctite® Nordbak® Wearing Compound | 99812 | 25 lb. kit | 12, 13 |
| Loctite® Nordbak® Wearing Compound | 99813 | 5 lb. kit | 12, 13 |
| Loctite® ODC-Free Cleaner & Degreaser – Aerosol | 22355 | 15 oz. | 22, 23 |
| Loctite® ODC-Free Cleaner & Degreaser – Can | 20260 | 1 gal. | 22, 23 |
| Loctite® ODC-Free Cleaner & Degreaser – Pump Spray | 20162 | 16 oz. | 22, 23 |
| Loctite® Orange Lotion Hand Cleaner | 36252 | 400 ml | 22, 23 |
| Loctite® Orange Lotion Hand Cleaner | 36253 | 4 L | 22, 23 |
| Loctite® O-Ring Making Kit | 00112 | | 26 |
| Loctite® Phenolic Roller | 96121 | | 27 |
| Loctite® Pipe Repair Kit – 5 x 182 cm | 96321 | | 26 |
| Loctite® Pipe Repair Kit – 10 x 365 cm | 96322 | | 26 |
| Loctite® Pipe Sealing Cord | 37370 | 50 m | 4, 5 |
| Loctite® Silver Grade Anti-Seize – Aerosol | 76759 | 12 oz. | 20, 21 |
| Loctite® Silver Grade Anti-Seize – Brushtop | 76732 | 8 oz. | 20, 21 |
| Loctite® Silver Grade Anti-Seize – Brushtop | 76764 | 1 lb. | 20, 21 |
| Loctite® Silver Grade Anti-Seize – Stick | 37783 | 20 g | 20, 21 |
| Loctite® Urethane Sealant | 39916 | 10.2 oz. | 14, 15 |
| Loctite® White Hi-Temp Anti-Seize | 34517 | 8 oz. | 20, 21 |
| Loctite® White Hi-Temp Anti-Seize | 34518 | 1 lb. | 20, 21 |
| Loctite® Zinc Anti-Seize – Can | 39901 | 1 lb. | 20, 21 |



Henkel - Asia Pacific Locations

**Henkel Asia-Pacific &
China Headquarters
Henkel (China) Co., Ltd.**
No. 928 Zhangheng Road,
Zhangjiang High Tech Park
Pudong, Shanghai, 201203
P.R. China
Tel : +86-21-2891 8000
Fax : +86-21-2891 6059

Henkel Australia Pty Ltd.
135-141 Canterbury Road
Kilsyth, Victoria 3137
Melbourne, Australia
Tel : +61-3-9728 7200
Fax : +61-3-9728 3986

**Henkel Adhesives Technologies
India Pvt. Ltd.**
No 1, Airport Service Road
Domlur Layout
Bangalore 560 071
Karnataka, India
Tel : +91-80-2535 7771
Fax : +91-80-2535 7770

PT Henkel Indonesien
TALAVERA Office Park, Level 21
Jl. T. B. Simatupang Kav. 22-26
Jakarta 12430, Indonesia
Tel : +62-21-2758 6900
Fax : +62-21-7592 4625

Henkel Japan Ltd.
Henkel Technology Center -
Asia Pacific
27-7 Shin Isogo-cho,
Isogo-ku, Yokohama, 235-0017
Japan
Tel : +81-45-758 1800
Fax : +81-45-758 1851

Henkel Korea Ltd.
11/F, Mapo Tower
418 Mapo-dong, Mapo-gu
Seoul, 121-734
Korea
Tel : +82-2-3279 1700
Fax : +82-2-3273 4663

Henkel (Malaysia) Sdn Bhd.
46/F, Menara TM
Jalan Pantai Bahru,
59200 Kuala Lumpur
Malaysia
Tel : +60-3-2246 1000
Fax : +60-3-2246 1188

Henkel New Zealand Ltd.
2 Allens Road East Tamaki,
Auckland,
New Zealand
Tel : +64-9-272 6710
Fax : +64-9-272 6711

Henkel Philippines, Inc.
21/F Asian Star Building
2402-2404, Asean Drive
Filinvest Corporate City, Alabang
Muntinlupa City 1781
Philippines
Tel : +63-2-859 3100
Fax : +63-2-807 6844

Henkel Singapore Pte Ltd.
401 Commonwealth Drive
#03-01/02
Haw Par Technocentre
Singapore 149598
Tel : +65-6266 0100
Fax : +65-6266 1161

Henkel Taiwan Ltd.
10/F, No.866, Chong Cheng Road,
Chong Ho City,
Taipei County 235
Taiwan (R.O.C.)
Tel : +886-2-2227 1988
Fax : +886-2-2226 8699

Henkel (Thailand) Ltd
The offices at Centralworld,
35th Floor, 999/9 Rama 1 Rd
Kwang Patumwan,
Khet Patumwan,
Bangkok 10330
Thailand
Tel : +66-2-209 8000
Fax : +66-2-209 8008-9

Dongsung NSC Vietnam Co Ltd.
No.7, Road 9A, Bien Hoa II
Industrial Zones
Bien Hoa, Dong Nai Province,
Vietnam
Tel : +84-61-383 5461
Fax : +84-61-383 5463

**Global HQ
Henkel AG & Co. KGaA**
Henkelstrasse 67,
D-40191 Düsseldorf
Tel : +49-211 7970
Fax : +49-211 7980